

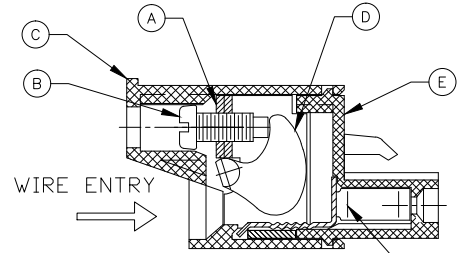
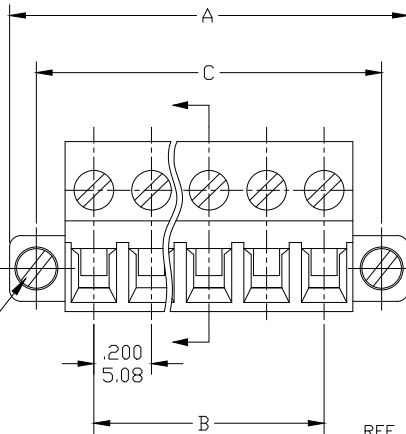
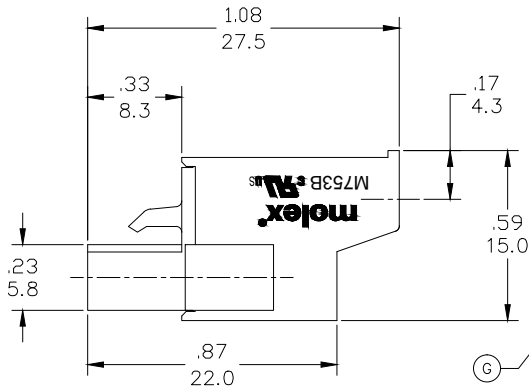
## Excellent Integrated System Limited

Stocking Distributor

Click to view price, real time Inventory, Delivery & Lifecycle Information:

[Molex Connector Corporation](#)  
[0397110011](#)

For any questions, you can email us directly:  
[sales@integrated-circuit.com](mailto:sales@integrated-circuit.com)



REF. LAST 2 DIGITS OF PART NUMBER EQUALS CIRCUIT COUNT

M753B-00-2-XX-3  
 COLOR  
 POSITIONS  
 PITCH  
 STYLE  
 SERIES

SPECIFICATIONS:

- MATERIAL:
  - A. BLOCK: STEEL ZINC PLATED
  - B. SCREW: M2.5, STEEL ZINC PLATED
  - C. BODY: PA66 UL94 V-0
  - D. CAM: STAINLESS STEEL
  - E. COVER: PA66 UL94 V-0
  - F. TERMINAL: BRASS TIN PLATED
  - G. MOUNTING SCREW: M2.5, STEEL ZINC PLATED

- WIRE SIZE: 30 TO 12AWG
- RATING: 15A AT 51-150V, 15A AT 151-300V
- MAX TORQUE: 3.5 IN. LBS. (.4 Nm)
- WIRE STRIP: .37 (9.5mm)
- DIELECTRIC VOLTAGE WITHSTAND: AC 2500V FOR 1 MINUTE
- INSULATION RESISTANCE: DC 500V, 500MΩ
- RATED IMPULSE VOLTAGE: 4000V, PLUS AND MINUS 5 TIMES EACH
- OPERATING TEMPERATURE: -40°C TO +105°C
- DIMS. GREATER THAN 1.18 (30mm) HAVE A ⓑ TOLERANCE OF ±.02 (0.5mm)

PART NUMBER DATA										
CIRCUITS	PART NUMBER	ENGINEERING NUMBER	COLOR	A IN	B IN	C IN	A mm	B mm	C mm	
2	397110002	M753B-00-2-02-3	GREEN	.79	20.0	.200	5.08	.600	15.24	
3	397110003	M753B-00-2-03-3	GREEN	.99	25.0	.400	10.15	.800	20.32	
4	397110004	M753B-00-2-04-3	GREEN	1.19	30.1	.600	15.23	1.000	25.40	
5	397110005	M753B-00-2-05-3	GREEN	1.39	35.2	.800	20.31	1.200	30.48	
6	397110006	M753B-00-2-06-3	GREEN	1.59	40.3	1.000	25.39	1.400	35.56	
7	397110007	M753B-00-2-07-3	GREEN	1.79	45.4	1.199	30.46	1.600	40.64	
8	397110008	M753B-00-2-08-3	GREEN	1.99	50.4	1.399	35.54	1.800	45.72	
9	397110009	M753B-00-2-09-3	GREEN	2.19	55.5	1.599	40.62	2.000	50.80	
10	397110010	M753B-00-2-10-3	GREEN	2.39	60.6	1.799	45.70	2.200	55.88	
11	397110011	M753B-00-2-11-3	GREEN	2.59	65.7	1.999	50.77	2.400	60.96	
12	397110012	M753B-00-2-12-3	GREEN	2.79	70.8	2.199	55.85	2.600	66.04	
13		M753B-00-2-13-3	GREEN	2.99	75.8	2.399	60.93	2.800	71.12	
14		M753B-00-2-14-3	GREEN	3.19	80.9	2.599	66.01	3.000	76.20	
15		M753B-00-2-15-3	GREEN	3.39	86.0	2.799	71.08	3.200	81.28	
16		M753B-00-2-16-3	GREEN	3.59	91.1	2.999	76.16	3.400	86.36	
17		M753B-00-2-17-3	GREEN	3.79	96.2	3.198	81.24	3.600	91.44	
18		M753B-00-2-18-3	GREEN	3.99	101.2	3.398	86.32	3.800	96.52	
19		M753B-00-2-19-3	GREEN	4.19	106.3	3.598	91.39	4.000	101.60	
20		M753B-00-2-20-3	GREEN	4.39	111.4	3.798	96.47	4.200	106.68	
21		M753B-00-2-21-3	GREEN	4.59	116.5	3.998	101.55	4.400	111.76	
22		M753B-00-2-22-3	GREEN	4.79	121.6	4.198	106.63	4.600	116.84	
23		M753B-00-2-23-3	GREEN	4.99	126.6	4.398	111.70	4.800	121.92	
24		M753B-00-2-24-3	GREEN	5.19	131.7	4.598	116.78	5.000	127.00	

ⓑ SEE SHEET 2 FOR OPTIONAL (BLACK) PART NUMBERS

ADD SHEET 2, REV NOTES EC NO: IFC2015-1309 DRWN: RSTONE 1/27/15 CHKD: B GARDEN 20/50/122 APPR: JFMURPHY 20/14/10/16 REV DESCRIPTION	QUALITY SYMBOL	GENERAL TOLERANCES (UNLESS SPECIFIED)	DIMENSION STYLE	SCALE	DESIGN UNITS	THIRD ANGLE PROJECTION
	▽=0	mm INCH	IN/MM	---	METRIC	
	∇=0	4 PLACES ±-- ±--	RSTONE 2014/03/17	TITLE	TERMINAL PLUG, 5.08MM HORIZONTAL SCREW WITH MOUNTING ENDS	
		3 PLACES ±-- ±.005	CHECKED BY DATE	MOLEX INCORPORATED		
	2 PLACES ±0.13 ±.01	G FARNW 2014/05/15	APPROVED BY DATE	SEE CHART SD-39711-001		
	1 PLACE ±0.3 ±--	JFMURPHY 2014/10/16	MATERIAL NO. DOCUMENT NO.	SHEET NO. 1 OF 1		
	ANGULAR ±--°		THIS DRAWING CONTAINS INFORMATION THAT IS PROPRIETARY TO MOLEX INCORPORATED AND SHOULD NOT BE USED WITHOUT WRITTEN PERMISSION			
	DRAFT WHERE APPLICABLE MUST REMAIN WITHIN DIMENSIONS					

REF. LAST 2 DIGITS OF PART NUMBER EQUALS CIRCUIT COUNT

PART NUMBER DATA									
CIRCUITS	PART NUMBER	ENGINEERING NUMBER	COLOR	A IN	mm	B IN	mm	C IN	mm
2	395341002	M753B-00-2-02-1	BLACK	.79	20.0	.200	5.08	.600	15.24
3	395341003	M753B-00-2-03-1	BLACK	.99	25.0	.400	10.15	.800	20.32
4	395341004	M753B-00-2-04-1	BLACK	1.19	30.1	.600	15.23	1.000	25.40
5	395341005	M753B-00-2-05-1	BLACK	1.39	35.2	.800	20.31	1.200	30.48
6	395341006	M753B-00-2-06-1	BLACK	1.59	40.3	1.000	25.39	1.400	35.56
7	395341007	M753B-00-2-07-1	BLACK	1.79	45.4	1.199	30.46	1.600	40.64
8	395341008	M753B-00-2-08-1	BLACK	1.99	50.4	1.399	35.54	1.800	45.72
9	395341009	M753B-00-2-09-1	BLACK	2.19	55.5	1.599	40.62	2.000	50.80
10	395341010	M753B-00-2-10-1	BLACK	2.39	60.6	1.799	45.70	2.200	55.88
11	395341011	M753B-00-2-11-1	BLACK	2.59	65.7	1.999	50.77	2.400	60.96
12	395341012	M753B-00-2-12-1	BLACK	2.79	70.8	2.199	55.85	2.600	66.04
13		M753B-00-2-13-1	BLACK	2.99	75.8	2.399	60.93	2.800	71.12
14		M753B-00-2-14-1	BLACK	3.19	80.9	2.599	66.01	3.000	76.20
15		M753B-00-2-15-1	BLACK	3.39	86.0	2.799	71.08	3.200	81.28
16	395341016	M753B-00-2-16-1	BLACK	3.59	91.1	2.999	76.16	3.400	86.36
17		M753B-00-2-17-1	BLACK	3.79	96.2	3.198	81.24	3.600	91.44
18		M753B-00-2-18-1	BLACK	3.99	101.2	3.398	86.32	3.800	96.52
19		M753B-00-2-19-1	BLACK	4.19	106.3	3.598	91.39	4.000	101.60
20		M753B-00-2-20-1	BLACK	4.39	111.4	3.798	96.47	4.200	106.68
21	395341021	M753B-00-2-21-1	BLACK	4.59	116.5	3.998	101.55	4.400	111.76
22		M753B-00-2-22-1	BLACK	4.79	121.6	4.198	106.63	4.600	116.84
23		M753B-00-2-23-1	BLACK	4.99	126.6	4.398	111.70	4.800	121.92
24	395341024	M753B-00-2-24-1	BLACK	5.19	131.7	4.598	116.78	5.000	127.00

CONTACT FACTORY FOR OPTIONAL COLORS

ADD SHT 2, NEW P/N 395341021 EC NO. 1P/2015-1309 DRAWN: RSTONE CHECKED: B. ARDEN APPR: J. MURPHY	QUALITY SYMBOLS	GENERAL TOLERANCES (UNLESS SPECIFIED)	DIMENSION STYLE	SCALE	DESIGN UNITS	THIRD ANGLE PROJECTION	
	▽=0 ∠=0	mm INCH	IN/MM	---	METRIC		
		4 PLACES ±--- ±--- 3 PLACES ±--- ±.005 2 PLACES ±0.13 ±.01 1 PLACE ±0.3 ±---	DRAWN BY DATE RSTONE 2014/03/17	CHECKED BY DATE G FARNW 2014/05/15	TITLE TERMINAL PLUG, 5.08MM HORIZONTAL SCREW WITH MOUNTING ENDS		
		ANGULAR ±---°	APPROVED BY DATE JFMURPHY 2014/10/16	MATERIAL NO.	DOCUMENT NO.	SHEET NO.	
	DRAFT WHERE APPLICABLE MUST REMAIN WITHIN DIMENSIONS	SEE CHART			MOLEX INCORPORATED		
					SD-39711-001		
					2 OF 2		
					THIS DRAWING CONTAINS INFORMATION THAT IS PROPRIETARY TO MOLEX INCORPORATED AND SHOULD NOT BE USED WITHOUT WRITTEN PERMISSION		

10 9 8 7 6 5 4 3 2 1