

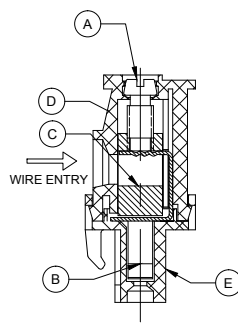
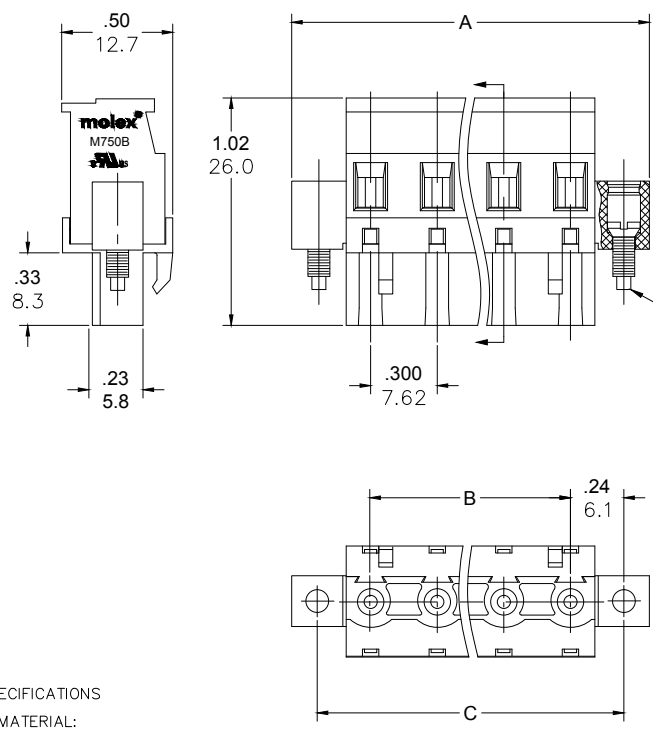
Excellent Integrated System Limited

Stocking Distributor

Click to view price, real time Inventory, Delivery & Lifecycle Information:

[Molex Connector Corporation](#)
[0397120002](#)

For any questions, you can email us directly:
sales@integrated-circuit.com



CONTACT FACTORY FOR OPTIONAL COLORS
M750B-09-5-XX-3
COLOR
POLES
PITCH
STYLE
SERIES

PART NUMBER DATA							
CIRCUITS	PART NUMBER	ENGINEERING NUMBER	COLOR	A IN mm	B IN mm	C IN mm	
2	397120002	M750B-09-5-02-3	GREEN	1.01	25.7	.300	7.62
3	397120003	M750B-09-5-03-3	GREEN	1.31	33.3	.600	15.24
4	397120004	M750B-09-5-04-3	GREEN	1.61	40.9	.900	22.86
5	397120005	M750B-09-5-05-3	GREEN	1.91	48.5	1.200	30.48
6	397120006	M750B-09-5-06-3	GREEN	2.21	56.2	1.500	38.10
7	397120007	M750B-09-5-07-3	GREEN	2.51	63.8	1.800	45.72
8	397120008	M750B-09-5-08-3	GREEN	2.81	71.4	2.100	53.34
9	397120009	M750B-09-5-09-3	GREEN	3.11	79.0	2.400	60.96
10	397120010	M750B-09-5-10-3	GREEN	3.41	86.6	2.700	68.58
11	397120011	M750B-09-5-11-3	GREEN	3.71	94.3	3.000	76.20
12	397120012	M750B-09-5-12-3	GREEN	4.01	101.9	3.300	83.82

SPECIFICATIONS

- MATERIAL:
 - A. SCREW: STEEL, M3, ZINC PLATED
 - B. CONTACT : BRONZE, TIN PLATED
 - C. CAGE: BRASS, NICKEL PLATED
 - D. BODY : PA66, UL94 V-0
 - E. COVER: PA66, UL94 V-0
 - F. MOUNTING SCREW: STEEL, M2.5, ZINC PLATED
- WIRE SIZE: 30-12AWG
- RATING: 15A AT 51-150V, 15A AT 151-300V
- POWER-FREQUENCY WITHSTAND: AC 2500V/1MIN.
- INSULATION RESISTANCE: DC500V 500MΩ OR ABOVE
- RATED IMPULSE VOLTAGE: 4000V/PLUS AND MINUS 5 TIMES EACH
- WIRE STRIP LENGTH: .28 IN. (7.0mm)
- SCREW TORQUE: 5.0 IN LBS. (0.56 N.M)
- OPERATING TEMPERATURE: -40°C TO +105°C
- DIMS SHOWN ARE FOR REFERENCE ONLY

REF. LAST 2 DIGITS OF PART NUMBER EQUALS CIRCUIT COUNT

RELEASED EC NO: JPC2014-1533 DRWN: RSTONE 2014/03/20 CHKD: G. FARNS APPR: JFMURPHY 2014/10/16 A	QUALITY SYMBOL ▽=0 ∇=0	GENERAL TOLERANCES (UNLESS SPECIFIED)		DIMENSION STYLE MM ONLY		SCALE	DESIGN UNITS	THIRD ANGLE PROJECTION																
		<table border="1"> <tr><th></th><th>mm</th><th>INCH</th></tr> <tr><td>4 PLACES</td><td>±---</td><td>±---</td></tr> <tr><td>3 PLACES</td><td>±---</td><td>±.005</td></tr> <tr><td>2 PLACES</td><td>±0.13</td><td>±.01</td></tr> <tr><td>1 PLACE</td><td>±0.3</td><td>±---</td></tr> </table>			mm	INCH	4 PLACES	±---	±---	3 PLACES	±---	±.005	2 PLACES	±0.13	±.01	1 PLACE	±0.3	±---	DRAWN BY DATE RSTONE 2014/02/27		---	METRIC	☉	PLUGGABLE TERMINAL BLOCK 7.62MM (.300) PITCH VERT FRONT FACING-MTG ENDS MOLEX INCORPORATED
			mm	INCH																				
		4 PLACES	±---	±---																				
3 PLACES	±---	±.005																						
2 PLACES	±0.13	±.01																						
1 PLACE	±0.3	±---																						
ANGULAR ±---°		CHECKED BY DATE G. FARNS ---		APPROVED BY DATE JFMURPHY 2014/10/16		MATERIAL NO. DOCUMENT NO. SEE CHART SD-39712-001																		
DRAFT WHERE APPLICABLE MUST REMAIN WITHIN DIMENSIONS		SIZE C		THIS DRAWING CONTAINS INFORMATION THAT IS PROPRIETARY TO MOLEX INCORPORATED AND SHOULD NOT BE USED WITHOUT WRITTEN PERMISSION																				
						SHEET NO. 1 OF 1																		