

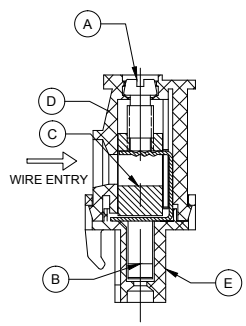
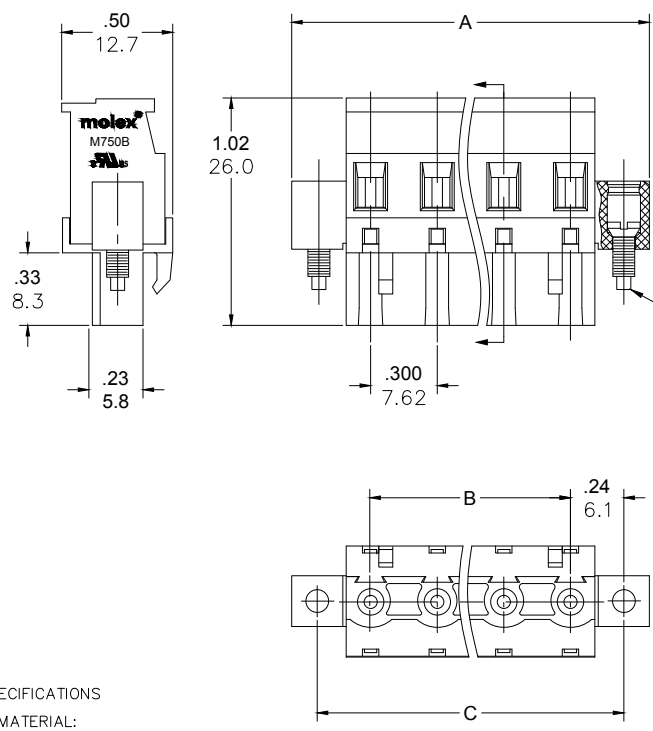
Excellent Integrated System Limited

Stocking Distributor

Click to view price, real time Inventory, Delivery & Lifecycle Information:

[Molex Connector Corporation](#)
[0397120009](#)

For any questions, you can email us directly:
sales@integrated-circuit.com



CONTACT FACTORY FOR OPTIONAL COLORS
M750B-09-5-XX-3
COLOR
POLES
PITCH
STYLE
SERIES

PART NUMBER DATA						
CIRCUITS	PART NUMBER	ENGINEERING NUMBER	COLOR	A IN mm	B IN mm	C IN mm
2	397120002	M750B-09-5-02-3	GREEN	1.01	25.7	.300 7.62 .78 19.8
3	397120003	M750B-09-5-03-3	GREEN	1.31	33.3	.600 15.24 1.08 27.4
4	397120004	M750B-09-5-04-3	GREEN	1.61	40.9	.900 22.86 1.38 35.1
5	397120005	M750B-09-5-05-3	GREEN	1.91	48.5	1.200 30.48 1.68 42.7
6	397120006	M750B-09-5-06-3	GREEN	2.21	56.2	1.500 38.10 1.98 50.3
7	397120007	M750B-09-5-07-3	GREEN	2.51	63.8	1.800 45.72 2.28 57.9
8	397120008	M750B-09-5-08-3	GREEN	2.81	71.4	2.100 53.34 2.58 65.5
9	397120009	M750B-09-5-09-3	GREEN	3.11	79.0	2.400 60.96 2.88 73.2
10	397120010	M750B-09-5-10-3	GREEN	3.41	86.6	2.700 68.58 3.18 80.8
11	397120011	M750B-09-5-11-3	GREEN	3.71	94.3	3.000 76.20 3.48 88.4
12	397120012	M750B-09-5-12-3	GREEN	4.01	101.9	3.300 83.82 3.78 96.0

SPECIFICATIONS

- MATERIAL:
 - A. SCREW: STEEL, M3, ZINC PLATED
 - B. CONTACT : BRONZE, TIN PLATED
 - C. CAGE: BRASS, NICKEL PLATED
 - D. BODY : PA66, UL94 V-0
 - E. COVER: PA66, UL94 V-0
 - F. MOUNTING SCREW: STEEL, M2.5, ZINC PLATED
- WIRE SIZE: 30-12AWG
- RATING: 15A AT 51-150V, 15A AT 151-300V
- POWER-FREQUENCY WITHSTAND: AC 2500V/1MIN.
- INSULATION RESISTANCE: DC500V 500MΩ OR ABOVE
- RATED IMPULSE VOLTAGE: 4000V/PLUS AND MINUS 5 TIMES EACH
- WIRE STRIP LENGTH: .28 IN. (7.0mm)
- SCREW TORQUE: 5.0 IN LBS. (0.56 N.M)
- OPERATING TEMPERATURE: -40°C TO +105°C
- DIMS SHOWN ARE FOR REFERENCE ONLY

REF. LAST 2 DIGITS OF PART NUMBER EQUALS CIRCUIT COUNT

RELEASED EC NO: JPC2014-1533 DRWN: RSTONE 2014/03/20 CHKD: G. FARNS APPR: JFMURPHY 2014/10/16 A	QUALITY SYMBOL ▽=0 ∇=0	GENERAL TOLERANCES (UNLESS SPECIFIED)		DIMENSION STYLE MM ONLY		SCALE ---	DESIGN UNITS METRIC	THIRD ANGLE PROJECTION	
		4 PLACES ±-- ±-- 3 PLACES ±-- ±.005 2 PLACES ±0.13 ±.01 1 PLACE ±0.3 ±--	mm INCH	DRAWN BY RSTONE	DATE 2014/02/27	TITLE PLUGGABLE TERMINAL BLOCK 7.62MM (.300) PITCH VERT FRONT FACING-MTG ENDS			
		ANGULAR ±--°		CHECKED BY G. FARNS	DATE ---	MOLEX INCORPORATED			
		DRAFT WHERE APPLICABLE MUST REMAIN WITHIN DIMENSIONS		APPROVED BY JFMURPHY	DATE 2014/10/16	MATERIAL NO. SEE CHART	DOCUMENT NO. SD-39712-001	SHEET NO. 1 OF 1	

THIS DRAWING CONTAINS INFORMATION THAT IS PROPRIETARY TO MOLEX INCORPORATED AND SHOULD NOT BE USED WITHOUT WRITTEN PERMISSION