

Excellent Integrated System Limited

Stocking Distributor

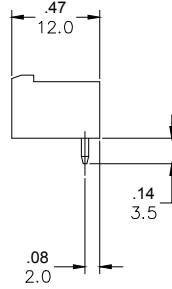
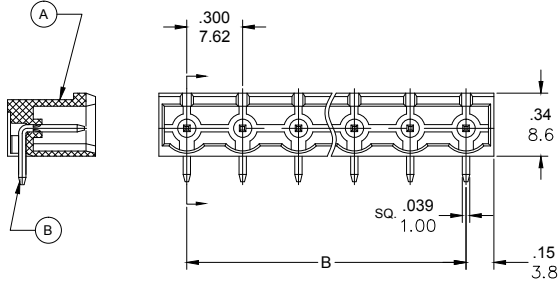
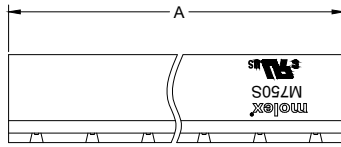
Click to view price, real time Inventory, Delivery & Lifecycle Information:

[Molex Connector Corporation](#)
[0397230005](#)

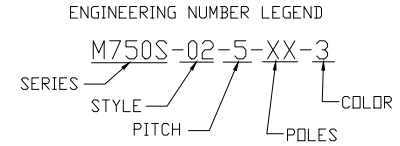
For any questions, you can email us directly:

sales@integrated-circuit.com

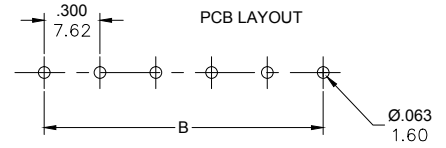
| PART NUMBER DATA | | | | | | | |
|------------------|-------------|--------------------|-------|------|------|-------|-------|
| CIRCUITS | PART NUMBER | ENGINEERING NUMBER | COLOR | A IN | mm | B IN | mm |
| 2 | 397230002 | M750S-02-5-02-3 | GREEN | .60 | 15.2 | .300 | 7.62 |
| 3 | 397230003 | M750S-02-5-03-3 | GREEN | .90 | 22.9 | .600 | 15.24 |
| 4 | 397230004 | M750S-02-5-04-3 | GREEN | 1.20 | 30.5 | .900 | 22.86 |
| 5 | 397230005 | M750S-02-5-05-3 | GREEN | 1.50 | 38.1 | 1.200 | 30.48 |
| 6 | 397230006 | M750S-02-5-06-3 | GREEN | 1.80 | 45.7 | 1.500 | 38.10 |
| 7 | 397230007 | M750S-02-5-07-3 | GREEN | 2.10 | 53.3 | 1.800 | 45.72 |
| 8 | 397230008 | M750S-02-5-08-3 | GREEN | 2.40 | 61.0 | 2.100 | 53.34 |
| 9 | 397230009 | M750S-02-5-09-3 | GREEN | 2.70 | 68.6 | 2.400 | 60.96 |
| 10 | 397230010 | M750S-02-5-10-3 | GREEN | 3.00 | 76.2 | 2.700 | 68.58 |
| 11 | 397230011 | M750S-02-5-11-3 | GREEN | 3.30 | 83.8 | 3.000 | 76.20 |
| 12 | 397230012 | M750S-02-5-12-3 | GREEN | 3.60 | 91.4 | 3.300 | 83.82 |



REF. LAST 2 DIGITS OF PART NUMBER EQUALS NUMBER OF POLES



CONTACT FACTORY FOR OPTIONAL COLORS



SPECIFICATIONS:

- MATERIAL:
 - BODY: PA66, UL94 V-0
 - TERMINAL: BRASS, TIN PLATED
- RATING: 15A AT 51-150V, 10A AT 151 TO 300V
- OPERATING TEMPERATURE: -40°C + 105°C
- DIELECTRIC VOLTAGE WITHSTAND: AC 2500V FOR 1 MINUTE.
- INSULATION RESISTANCE: DC 500V, 500MΩ
- RATED IMPULSE VOLTAGE: 4000V, PLUS AND MINUS 5 TIMES EACH.
- MAX. SOLDERING TEMPERATURE: +260°C FOR 5 SEC.
- MATES WITH TERMINAL PLUG SERIES: 39704
- DIMS SHOWN ARE FOR REFERENCE ONLY

| RELEASED EC NO. JPC/2014/1194 DRAWN: RSTONE 2014/01/23 CHECKED: G. FARNS APPR: JFMURPHY 2014/10/16 DESIGNED BY: JFMURPHY | QUALITY SYMBOLS | GENERAL TOLERANCES (UNLESS SPECIFIED) | DIMENSION STYLE IN/MM | SCALE --- | DESIGN UNITS METRIC | THIRD ANGLE PROJECTION | | | | | | | | | | | | | | | |
|---|-----------------|---|-----------------------|-----------|---------------------|------------------------|------|------|----------|------|-------|----------|-------|------|---------|------|------|---|--|--|--|
| | ▽=0 ∇=0 | <table border="1"> <tr><th>PLACES</th><th>mm</th><th>INCH</th></tr> <tr><td>4 PLACES</td><td>±---</td><td>±---</td></tr> <tr><td>3 PLACES</td><td>±---</td><td>±.005</td></tr> <tr><td>2 PLACES</td><td>±0.13</td><td>±.01</td></tr> <tr><td>1 PLACE</td><td>±0.3</td><td>±---</td></tr> </table> ANGULAR ±---° | PLACES | mm | INCH | 4 PLACES | ±--- | ±--- | 3 PLACES | ±--- | ±.005 | 2 PLACES | ±0.13 | ±.01 | 1 PLACE | ±0.3 | ±--- | DRAWN BY: RSTONE DATE: 2014/01/23 CHECKED BY: G. FARNS DATE: --- APPROVED BY: JFMURPHY DATE: 2014/10/16 | TITLE: 7.62MM EURO HEADER RIGHT ANGLE CLOSED END MOLEX INCORPORATED MATERIAL NO. SEE CHART DOCUMENT NO. SD-39723-001 | | |
| | PLACES | mm | INCH | | | | | | | | | | | | | | | | | | |
| | 4 PLACES | ±--- | ±--- | | | | | | | | | | | | | | | | | | |
| 3 PLACES | ±--- | ±.005 | | | | | | | | | | | | | | | | | | | |
| 2 PLACES | ±0.13 | ±.01 | | | | | | | | | | | | | | | | | | | |
| 1 PLACE | ±0.3 | ±--- | | | | | | | | | | | | | | | | | | | |
| DRAFT WHERE APPLICABLE MUST REMAIN WITHIN DIMENSIONS | | SHEET NO. 1 OF 1 THIS DRAWING CONTAINS INFORMATION THAT IS PROPRIETARY TO MOLEX INCORPORATED AND SHOULD NOT BE USED WITHOUT WRITTEN PERMISSION | | | | | | | | | | | | | | | | | | | |
| A | | B | | | | | | | | | | | | | | | | | | | |