

## **Excellent Integrated System Limited**

Stocking Distributor

Click to view price, real time Inventory, Delivery & Lifecycle Information:

[Molex Connector Corporation](#)  
[0397260005](#)

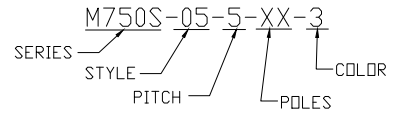
For any questions, you can email us directly:  
[sales@integrated-circuit.com](mailto:sales@integrated-circuit.com)

PART NUMBER DATA

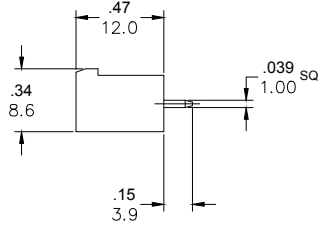
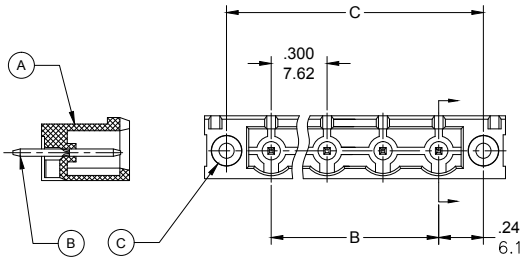
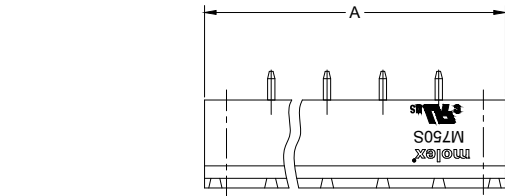
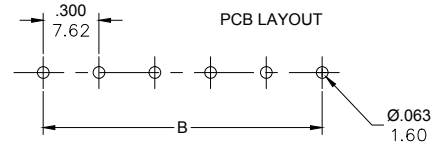
CIRCUITS	PART NUMBER	ENGINEERING NUMBER	COLOR	A IN mm	B IN mm	C IN mm
2	397260002	M750S-05-5-02-3	GREEN	1.32	33.4	.300 7.62 0.78 19.8
3	397260003	M750S-05-5-03-3	GREEN	1.62	41.1	.600 15.24 1.08 27.4
4	397260004	M750S-05-5-04-3	GREEN	1.92	48.7	.900 22.86 1.38 35.1
5	397260005	M750S-05-5-05-3	GREEN	2.22	56.3	1.200 30.48 1.68 42.7
6	397260006	M750S-05-5-06-3	GREEN	2.52	63.9	1.500 38.10 1.98 50.3
7	397260007	M750S-05-5-07-3	GREEN	2.82	71.5	1.800 45.72 2.28 57.9
8	397260008	M750S-05-5-08-3	GREEN	3.12	79.2	2.100 53.34 2.58 65.5
9	397260009	M750S-05-5-09-3	GREEN	3.42	86.8	2.400 60.96 2.88 73.1
10	397260010	M750S-05-5-10-3	GREEN	3.72	94.4	2.700 68.58 3.18 80.8
11	397260011	M750S-05-5-11-3	GREEN	4.02	102.0	3.000 76.20 3.48 88.4
12	397260012	M750S-05-5-12-3	GREEN	4.32	109.6	3.300 83.82 3.78 96.0

REF. LAST 2 DIGITS OF PART NUMBER EQUALS NUMBER OF POLES

ENGINEERING NUMBER LEGEND



CONTACT FACTORY FOR OPTIONAL COLORS



SPECIFICATIONS:

- MATERIAL:
  - A. BODY: PA66, UL94 V-0
  - B. TERMINAL: BRASS, TIN PLATED
  - C. THREADED INSERT: M2.5, BRASS
- RATING: 15A AT 51-150V, 10A AT 151 TO 300V
- OPERATING TEMPERATURE: -40°C + 105°C
- DIELECTRIC VOLTAGE WITHSTAND: AC 2500V FOR 1 MINUTE.
- INSULATION RESISTANCE: DC 500V, 500MΩ.
- RATED IMPULSE VOLTAGE: 4000V, PLUS AND MINUS 5 TIMES EACH.
- MAX. SOLDERING TEMPERATURE: +260°C FOR 5 SEC.
- MATES WITH TERMINAL PLUG SERIES: 39705
- DIMS SHOWN ARE FOR REFERENCE ONLY

RELEASED EC NO: IPG/2014/1194 DRAWN: RSTONE 2014/01/20 CHECKED: G. FARNS APPR: J. MURPHY 2014/10/16	QUALITY SYMBOLS ▽=0 ∇=0	GENERAL TOLERANCES (UNLESS SPECIFIED) 4 PLACES ±--- ±--- 3 PLACES ±--- ±.005 2 PLACES ±0.13 ±.01 1 PLACE ±0.3 ±--- ANGULAR ±---°	DIMENSION STYLE IN/MM DRAWN BY: RSTONE DATE: 2014/01/23 CHECKED BY: G. FARNS APPROVED BY: JFMURPHY DATE: 2014/10/16	SCALE: --- DESIGN UNITS: METRIC THIRD ANGLE PROJECTION
	DRAFT WHERE APPLICABLE MUST REMAIN WITHIN DIMENSIONS		SEE CHART	TITLE: 7.62MM EURO HEADER WITH VERTICAL MOUNTING ENDS MOLEX INCORPORATED MATERIAL NO. SD-39726-001 DOCUMENT NO. SD-39726-001 SHEET NO. 1 OF 1