

Excellent Integrated System Limited

Stocking Distributor

Click to view price, real time Inventory, Delivery & Lifecycle Information:

[Molex Connector Corporation](#)
[0397260012](#)

For any questions, you can email us directly:

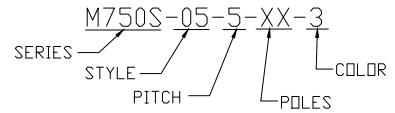
sales@integrated-circuit.com

PART NUMBER DATA

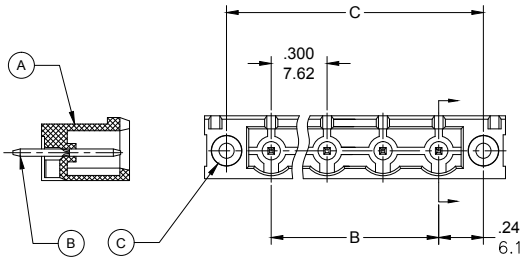
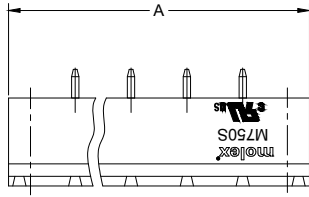
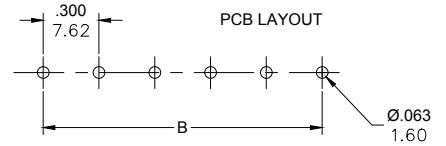
| CIRCUITS | PART NUMBER | ENGINEERING NUMBER | COLOR | A IN mm | B IN mm | C IN mm | | | |
|----------|-------------|--------------------|-------|---------|---------|---------|-------|------|------|
| 2 | 397260002 | M750S-05-5-02-3 | GREEN | 1.32 | 33.4 | .300 | 7.62 | 0.78 | 19.8 |
| 3 | 397260003 | M750S-05-5-03-3 | GREEN | 1.62 | 41.1 | .600 | 15.24 | 1.08 | 27.4 |
| 4 | 397260004 | M750S-05-5-04-3 | GREEN | 1.92 | 48.7 | .900 | 22.86 | 1.38 | 35.1 |
| 5 | 397260005 | M750S-05-5-05-3 | GREEN | 2.22 | 56.3 | 1.200 | 30.48 | 1.68 | 42.7 |
| 6 | 397260006 | M750S-05-5-06-3 | GREEN | 2.52 | 63.9 | 1.500 | 38.10 | 1.98 | 50.3 |
| 7 | 397260007 | M750S-05-5-07-3 | GREEN | 2.82 | 71.5 | 1.800 | 45.72 | 2.28 | 57.9 |
| 8 | 397260008 | M750S-05-5-08-3 | GREEN | 3.12 | 79.2 | 2.100 | 53.34 | 2.58 | 65.5 |
| 9 | 397260009 | M750S-05-5-09-3 | GREEN | 3.42 | 86.8 | 2.400 | 60.96 | 2.88 | 73.1 |
| 10 | 397260010 | M750S-05-5-10-3 | GREEN | 3.72 | 94.4 | 2.700 | 68.58 | 3.18 | 80.8 |
| 11 | 397260011 | M750S-05-5-11-3 | GREEN | 4.02 | 102.0 | 3.000 | 76.20 | 3.48 | 88.4 |
| 12 | 397260012 | M750S-05-5-12-3 | GREEN | 4.32 | 109.6 | 3.300 | 83.82 | 3.78 | 96.0 |

REF. LAST 2 DIGITS OF PART NUMBER EQUALS NUMBER OF POLES

ENGINEERING NUMBER LEGEND



CONTACT FACTORY FOR OPTIONAL COLORS



SPECIFICATIONS:

- MATERIAL:
 - BODY: PA66, UL94 V-0
 - TERMINAL: BRASS, TIN PLATED
 - THREADED INSERT: M2.5, BRASS
- RATING: 15A AT 51-150V, 10A AT 151 TO 300V
- OPERATING TEMPERATURE: -40°C + 105°C
- DIELECTRIC VOLTAGE WITHSTAND: AC 2500V FOR 1 MINUTE.
- INSULATION RESISTANCE: DC 500V, 500MΩ.
- RATED IMPULSE VOLTAGE: 4000V, PLUS AND MINUS 5 TIMES EACH.
- MAX. SOLDERING TEMPERATURE: +260°C FOR 5 SEC.
- MATES WITH TERMINAL PLUG SERIES: 39705
- DIMS SHOWN ARE FOR REFERENCE ONLY

| | | | | | | |
|--|--|--|---|--|--|------------------|
| RELEASED EC NO: IPG/2014/1194 DRAWN: RSTONE 2014/01/23 CHECKED: G. FARNS APPR: J. MURPHY 2014/10/16 DESIGNED: J. MURPHY | QUALITY SYMBOLS ▽=0 ∇=0 | GENERAL TOLERANCES (UNLESS SPECIFIED) 4 PLACES ±.--- ±.--- 3 PLACES ±.--- ±.005 2 PLACES ±0.13 ±.01 1 PLACE ±0.3 ±.--- ANGULAR ±.---° | DIMENSION STYLE IN/MM DRAWN BY DATE RSTONE 2014/01/23 CHECKED BY DATE G. FARNS APPROVED BY DATE JFMURPHY 2014/10/16 | SCALE --- DESIGN UNITS METRIC THIRD ANGLE PROJECTION | TITLE 7.62MM EURO HEADER WITH VERTICAL MOUNTING ENDS MOLEX INCORPORATED MATERIAL NO. SEE CHART DOCUMENT NO. SD-39726-001 | SHEET NO. 1 OF 1 |
| | DRAFT WHERE APPLICABLE MUST REMAIN WITHIN DIMENSIONS SEE CHART THIS DRAWING CONTAINS INFORMATION THAT IS PROPRIETARY TO MOLEX INCORPORATED AND SHOULD NOT BE USED WITHOUT WRITTEN PERMISSION | | | | | |