

Excellent Integrated System Limited

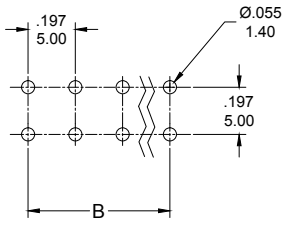
Stocking Distributor

Click to view price, real time Inventory, Delivery & Lifecycle Information:

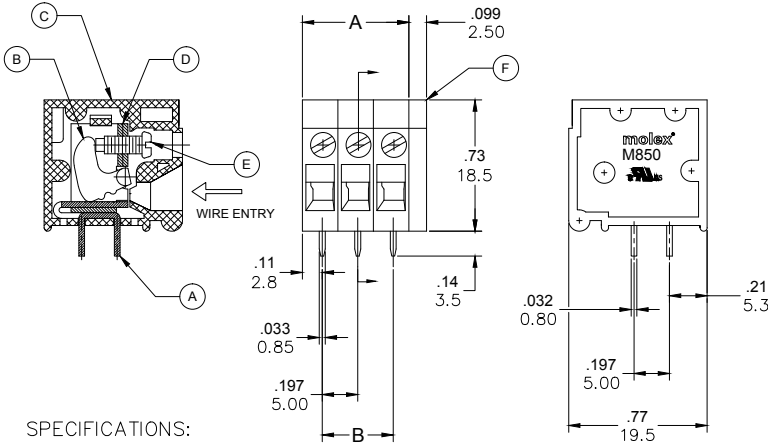
[Molex Connector Corporation](#)
[0397430012](#)

For any questions, you can email us directly:

sales@integrated-circuit.com



PCB LAYOUT

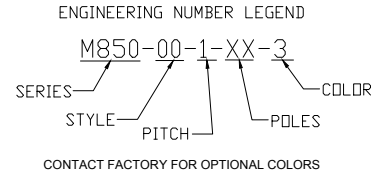


SPECIFICATIONS:

- MATERIAL:
 - A. TERMINAL: BRASS, TIN PLATED
 - B. CAM: STEEL, ZINC PLATED
 - C. BODY: PA66, UL94 V-0
 - D. CAGE: STEEL, ZINC PLATED
 - E. SCREW: M2.5, STEEL, ZINC PLATED
 - F. COVER: PA66, UL94 V-0
- RATING: 300V, 20A
- MAX TORQUE: 4.5 LBF.IN
- WIRE RANGE: 30-12 AWG
- WIRE STRIP: .39 (10.0MM)
- DIELECTRIC VOLTAGE WITHSTAND: AC 2500V FOR 1 MINUTE
- INSULATION RESISTANCE: DC 500V, 500MΩ
- RATED IMPULSE VOLTAGE: 4000V PLUS AND MINUS 5 TIMES EACH
- OPERATING TEMPERATURE: -40°C TO +105°C
- MAX SOLDERING TEMP: +260°C (500°F) FOR 5 SECONDS
- DIMS SHOWN ARE FOR REFERENCE ONLY

PART NUMBER DATA							
CIRCUITS	PART NUMBER	ENGINEERING NUMBER	COLOR	A IN mm	B IN mm		
1	397430001	M850-00-1-01-3	GREEN	.20	5.0	.000	.00
2	397430002	M850-00-1-02-3	GREEN	.39	10.0	.197	5.00
3	397430003	M850-00-1-03-3	GREEN	.59	15.0	.394	10.00
4	397430004	M850-00-1-04-3	GREEN	.79	20.0	.591	15.00
5	397430005	M850-00-1-05-3	GREEN	.98	25.0	.787	20.00
6	397430006	M850-00-1-06-3	GREEN	1.18	30.0	.984	25.00
7	397430007	M850-00-1-07-3	GREEN	1.38	35.0	1.181	30.00
8	397430008	M850-00-1-08-3	GREEN	1.57	40.0	1.378	35.00
9	397430009	M850-00-1-09-3	GREEN	1.77	45.0	1.575	40.00
10	397430010	M850-00-1-10-3	GREEN	1.97	50.0	1.772	45.00
11	397430011	M850-00-1-11-3	GREEN	2.17	55.0	1.969	50.00
12	397430012	M850-00-1-12-3	GREEN	2.36	60.0	2.165	55.00
13		M850-00-1-13-3	GREEN	2.56	65.0	2.362	60.00
14		M850-00-1-14-3	GREEN	2.76	70.0	2.559	65.00
15		M850-00-1-15-3	GREEN	2.95	75.0	2.756	70.00
16		M850-00-1-16-3	GREEN	3.15	80.0	2.953	75.00
17		M850-00-1-17-3	GREEN	3.35	85.0	3.150	80.00
18		M850-00-1-18-3	GREEN	3.54	90.0	3.346	85.00
19		M850-00-1-19-3	GREEN	3.74	95.0	3.543	90.00
20		M850-00-1-20-3	GREEN	3.94	100.0	3.740	95.00
21		M850-00-1-21-3	GREEN	4.13	105.0	3.937	100.00
22		M850-00-1-22-3	GREEN	4.33	110.0	4.134	105.00
23		M850-00-1-23-3	GREEN	4.53	115.0	4.331	110.00
24		M850-00-1-24-3	GREEN	4.72	120.0	4.528	115.00

REF. LAST 2 DIGITS OF PART NUMBER EQUAL CIRCUIT COUNT



RELEASED EC NO: PC2014-1936 DRWN: RSTONE 2014/06/30 CHKD: G FARNSW APPR: JFMURPHY 2014/10/16 REV A	QUALITY SYMBOL ▽=0 ▽=0	GENERAL TOLERANCES (UNLESS SPECIFIED)		DIMENSION STYLE IN/MM		SCALE	DESIGN UNITS	THIRD ANGLE PROJECTION	
		4 PLACES	±	±	DRAWN BY	DATE	---	METRIC	☉
		3 PLACES	±	±.005	RSTONE	2014/06/30	TITLE TERM BLOCK, HORIZONTAL MODULAR, BOX 5.0MM		
		2 PLACES	±	±.01	G FARNSW	---	MOLEX INCORPORATED		
1 PLACE	±	±.3	APPROVED BY	DATE	MATERIAL NO. JFMURPHY 2014/10/16 DOCUMENT NO. SD-39743-001 SHEET NO. 1 OF 1				
DRAFT WHERE APPLICABLE MUST REMAIN WITHIN DIMENSIONS		ANGULAR ±2°		SIZE C		THIS DRAWING CONTAINS INFORMATION THAT IS PROPRIETARY TO MOLEX INCORPORATED AND SHOULD NOT BE USED WITHOUT WRITTEN PERMISSION			