

Excellent Integrated System Limited

Stocking Distributor

Click to view price, real time Inventory, Delivery & Lifecycle Information:

[Molex Connector Corporation](#)
[0397510010](#)

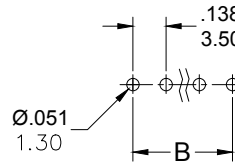
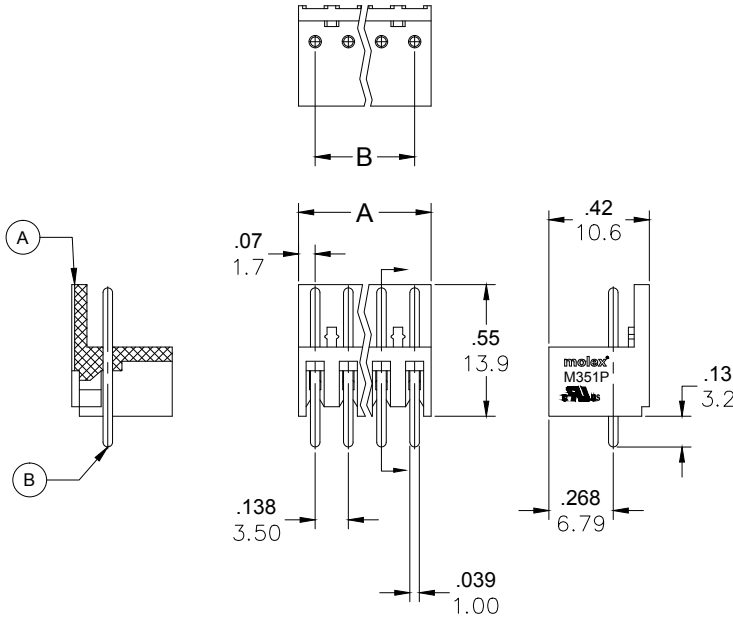
For any questions, you can email us directly:

sales@integrated-circuit.com

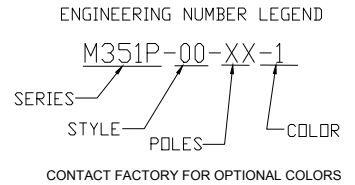
PART NUMBER DATA

CIRCUITS	PART NUMBER	ENGINEERING NUMBER	COLOR	A IN mm	B IN mm
2	397510002	M351P-00-02-1	BLACK	.28	7.0
3	397510003	M351P-00-03-1	BLACK	.41	10.5
4	397510004	M351P-00-04-1	BLACK	.55	14.0
5	397510005	M351P-00-05-1	BLACK	.69	17.5
6	397510006	M351P-00-06-1	BLACK	.83	21.0
7	397510007	M351P-00-07-1	BLACK	.96	24.5
8	397510008	M351P-00-08-1	BLACK	1.10	28.0
9	397510009	M351P-00-09-1	BLACK	1.24	31.5
10	397510010	M351P-00-10-1	BLACK	1.38	35.0
11	397510011	M351P-00-11-1	BLACK	1.52	38.5
12	397510012	M351P-00-12-1	BLACK	1.65	42.0
13		M351P-00-13-1	BLACK	1.79	45.5
14		M351P-00-14-1	BLACK	1.93	49.0
15		M351P-00-15-1	BLACK	2.07	52.5
16		M351P-00-16-1	BLACK	2.20	56.0
17		M351P-00-17-1	BLACK	2.34	59.5
18		M351P-00-18-1	BLACK	2.48	63.0
19		M351P-00-19-1	BLACK	2.62	66.5
20		M351P-00-20-1	BLACK	2.76	70.0
21		M351P-00-21-1	BLACK	2.89	73.5
22		M351P-00-22-1	BLACK	3.03	77.0
23		M351P-00-23-1	BLACK	3.17	80.5
24		M351P-00-24-1	BLACK	3.31	84.0

REF. THE LAST 2 DIGITS OF THE PART NUMBER EQUAL CIRCUIT COUNT



PCB LAYOUT



SPECIFICATIONS

1. MATERIAL:

- A. BODY: PA66, UL94V-0
- B. TERMINAL: BRASS. TIN PLATED

2. RATING: 125V, 8A

3. OPERATING TEMPERATURE: -40°C TO +105° C

4. DIMS SHOWN ARE FOR REFERENCE ONLY

RELEASED EC NO: JPC2016-0082 DRWN: RSTONE 2014/07/24 CHKD: G FARNSW APPR: JFMURPHY 2014/10/16 REV A	QUALITY SYMBOL ▽=0 ▽=0	GENERAL TOLERANCES (UNLESS SPECIFIED)		DIMENSION STYLE IN/MM		SCALE ---	DESIGN UNITS METRIC	THIRD ANGLE PROJECTION	
		4 PLACES ±--- ±---	3 PLACES ±--- ±.005	DRAWN BY RSTONE	DATE 2014/07/24	TITLE HEADER, VERTICAL 3.5MM PITCH			
		2 PLACES ±0.13 ±.01	1 PLACE ±0.3 ±---	CHECKED BY G FARNSW	DATE ---	MOLEX INCORPORATED			
		ANGULAR ±---		APPROVED BY JFMURPHY	DATE 2014/10/16	MATERIAL NO. SEE CHART		DOCUMENT NO. SD-39751-001	SHEET NO. 1 OF 1
DRAFT WHERE APPLICABLE MUST REMAIN WITHIN DIMENSIONS		THIS DRAWING CONTAINS INFORMATION THAT IS PROPRIETARY TO MOLEX INCORPORATED AND SHOULD NOT BE USED WITHOUT WRITTEN PERMISSION							