

## Excellent Integrated System Limited

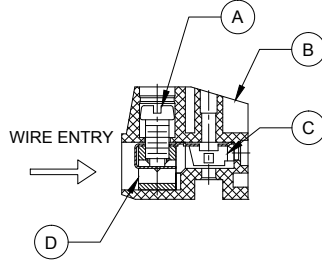
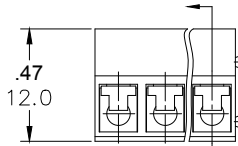
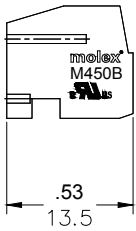
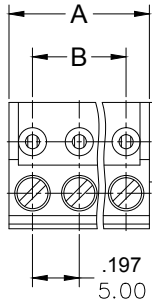
Stocking Distributor

Click to view price, real time Inventory, Delivery & Lifecycle Information:

[Molex Connector Corporation](#)  
[0397530003](#)

For any questions, you can email us directly:

[sales@integrated-circuit.com](mailto:sales@integrated-circuit.com)



PART NUMBER DATA							
CIRCUITS	PART NUMBER	ENGINEERING NUMBER	COLOR	A IN mm	B IN mm		
2	397530002	M450B-00-1-02-3	GREEN	.39	10.0	.197	5.00
3	397530003	M450B-00-1-03-3	GREEN	.59	15.0	.394	10.00
4	397530004	M450B-00-1-04-3	GREEN	.79	20.0	.591	15.00
5	397530005	M450B-00-1-05-3	GREEN	.98	25.0	.787	20.00
6	397530006	M450B-00-1-06-3	GREEN	1.18	30.0	.984	25.00
7	397530007	M450B-00-1-07-3	GREEN	1.38	35.0	1.181	30.00
8	397530008	M450B-00-1-08-3	GREEN	1.57	40.0	1.378	35.00
9	397530009	M450B-00-1-09-3	GREEN	1.77	45.0	1.575	40.00
10	397530010	M450B-00-1-10-3	GREEN	1.97	50.0	1.772	45.00
11	397530011	M450B-00-1-11-3	GREEN	2.17	55.0	1.969	50.00
12	397530012	M450B-00-1-12-3	GREEN	2.36	60.0	2.165	55.00
13		M450B-00-1-13-3	GREEN	2.56	65.0	2.362	60.00
14		M450B-00-1-14-3	GREEN	2.76	70.0	2.559	65.00
15		M450B-00-1-15-3	GREEN	2.95	75.0	2.756	70.00
16		M450B-00-1-16-3	GREEN	3.15	80.0	2.953	75.00
17		M450B-00-1-17-3	GREEN	3.35	85.0	3.150	80.00
18		M450B-00-1-18-3	GREEN	3.54	90.0	3.346	85.00
19		M450B-00-1-19-3	GREEN	3.74	95.0	3.543	90.00
20		M450B-00-1-20-3	GREEN	3.94	100.0	3.740	95.00
21		M450B-00-1-21-3	GREEN	4.13	105.0	3.937	100.00
22		M450B-00-1-22-3	GREEN	4.33	110.0	4.134	105.00
23		M450B-00-1-23-3	GREEN	4.53	115.0	4.331	110.00
24		M450B-00-1-24-3	GREEN	4.72	120.0	4.528	115.00

REF. THE LAST 2 DIGITS OF THE PART NUMBER EQUAL CIRCUIT COUNT

SPECIFICATIONS

1. MATERIAL:

- A. SCREW: M2.5 STEEL, ZINC PLATED
- B. BODY: PA66, UL94V-0
- C. CONTACT: PHOS-BRONZE
- D. CAGE: BRASS, NI PLATED

2. WIRE SIZE: 24 TO 14AWG

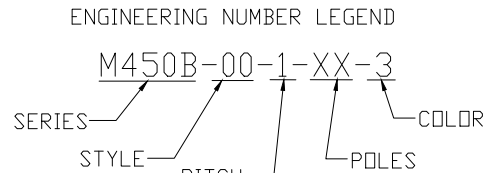
3. RATING: 300V, 10A

4. MAX TORQUE: 3 IN. LBS.

5. WIRE STRIP LENGTH: .20 IN. (5.0mm)

6. OPERATING TEMPERATURE: -40° C TO +105° C

7. DIMS SHOWN ARE FOR REFERENCE ONLY



CONTACT FACTORY FOR OPTIONAL COLORS

RELEASED EC NO: JPC2016-0082 DRWN: RSTONE 2014/07/25 CHKD: G FARNSW APPR: JFMURPHY 2014/10/16 DESCRIPTION REV A	QUALITY SYMBOL ▽=0 ▽=0	GENERAL TOLERANCES (UNLESS SPECIFIED) 4 PLACES ±.1 ±.1 3 PLACES ±.1 ±.005 2 PLACES ±0.13 ±.01 1 PLACE ±0.3 ±.1 ANGULAR ±.5°	DIMENSION STYLE IN/MM DRAWN BY DATE RSTONE 2014/07/25 CHECKED BY DATE G FARNSW APPROVED BY DATE JFMURPHY 2014/10/16	SCALE --- DESIGN UNITS METRIC THIRD ANGLE PROJECTION	TITLE TERMINAL PLUG-5.0MM HORIZONTAL MOLEX INCORPORATED	MATERIAL NO. SEE CHART SIZE C	DOCUMENT NO. SD-39753-001 THIS DRAWING CONTAINS INFORMATION THAT IS PROPRIETARY TO MOLEX INCORPORATED AND SHOULD NOT BE USED WITHOUT WRITTEN PERMISSION	SHEET NO. 1 OF 1
---	------------------------------	--	--	--	---	-------------------------------------	---	---------------------