

Excellent Integrated System Limited

Stocking Distributor

Click to view price, real time Inventory, Delivery & Lifecycle Information:

[Molex Connector Corporation](#)
[0397540006](#)

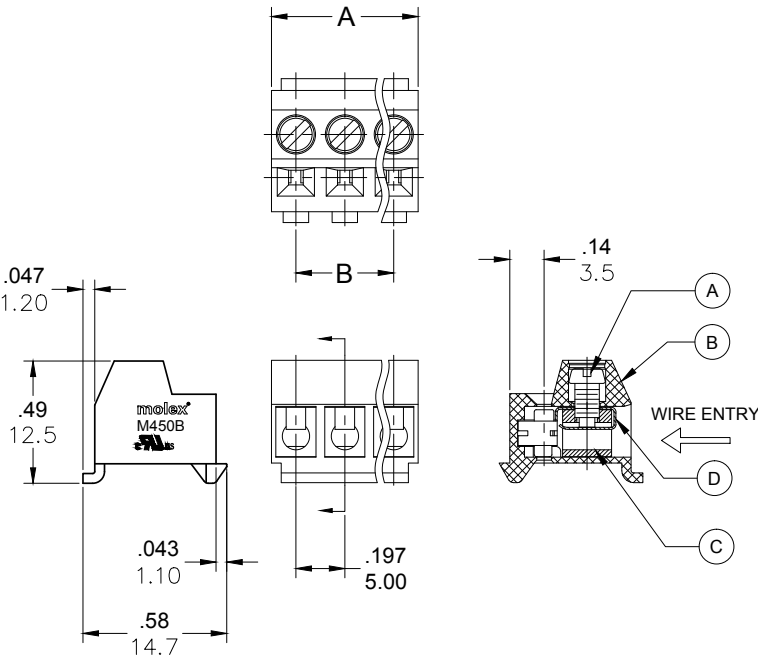
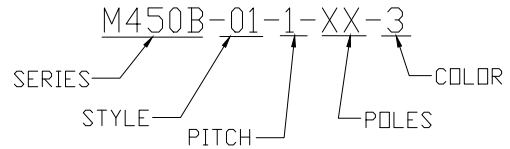
For any questions, you can email us directly:

sales@integrated-circuit.com

PART NUMBER DATA							
CIRCUITS	PART NUMBER	ENGINEERING NUMBER	COLOR	A IN mm	B IN mm		
2	397540002	M450B-01-1-02-3	GREEN	.39	10.0	.197	5.00
3	397540003	M450B-01-1-03-3	GREEN	.59	15.0	.394	10.00
4	397540004	M450B-01-1-04-3	GREEN	.79	20.0	.591	15.00
5	397540005	M450B-01-1-05-3	GREEN	.98	25.0	.787	20.00
6	397540006	M450B-01-1-06-3	GREEN	1.18	30.0	.984	25.00
7	397540007	M450B-01-1-07-3	GREEN	1.38	35.0	1.181	30.00
8	397540008	M450B-01-1-08-3	GREEN	1.57	40.0	1.378	35.00
9	397540009	M450B-01-1-09-3	GREEN	1.77	45.0	1.575	40.00
10	397540010	M450B-01-1-10-3	GREEN	1.97	50.0	1.772	45.00
11	397540011	M450B-01-1-11-3	GREEN	2.17	55.0	1.969	50.00
12	397540012	M450B-01-1-12-3	GREEN	2.36	60.0	2.165	55.00
13		M450B-01-1-13-3	GREEN	2.56	65.0	2.362	60.00
14		M450B-01-1-14-3	GREEN	2.76	70.0	2.559	65.00
15		M450B-01-1-15-3	GREEN	2.95	75.0	2.756	70.00
16		M450B-01-1-16-3	GREEN	3.15	80.0	2.953	75.00
17		M450B-01-1-17-3	GREEN	3.35	85.0	3.150	80.00
18		M450B-01-1-18-3	GREEN	3.54	90.0	3.346	85.00
19		M450B-01-1-19-3	GREEN	3.74	95.0	3.543	90.00
20		M450B-01-1-20-3	GREEN	3.94	100.0	3.740	95.00
21		M450B-01-1-21-3	GREEN	4.13	105.0	3.937	100.00
22		M450B-01-1-22-3	GREEN	4.33	110.0	4.134	105.00
23		M450B-01-1-23-3	GREEN	4.53	115.0	4.331	110.00
24		M450B-01-1-24-3	GREEN	4.72	120.0	4.528	115.00

REF. THE LAST 2 DIGITS OF THE PART NUMBER EQUAL CIRCUIT COUNT

ENGINEERING NUMBER LEGEND



SPECIFICATIONS

1. MATERIAL:

- A. SCREW: M2.5, STEEL, ZINC PLATED
- B. BODY: PA66, UL94 V-0
- C. CAGE: BRASS, NI PLATED
- D. CONTACT: PHOS-BRONZE, TIN PLATED

2. WIRE SIZE: 24 TO 14AWG

3. RATING: 300V, 10A

4. MAX TORQUE: 3IN. LBS.

5. WIRE STRIP LENGTH: .20 (5.0mm)

6. OPERATING TEMPERATURE: -40°C TO +105°C.

7. DIMS. SHOWN ARE FOR REFERENCE ONLY

RELEASED EC NO: JPC2016-0082 DRWN: RSTONE 2014/07/25 CHKD: G FARNSW APPR: JFMURPHY 2014/10/16 A	QUALITY SYMBOL ▽=0 ▽=0	GENERAL TOLERANCES FOR DIMENSIONS (UNLESS SPECIFIED) mm INCH 4 PLACES ±.13 ±.01 3 PLACES ±.13 ±.01 2 PLACES ±.13 ±.01 1 PLACE ±.3 ±.1 ANGULAR ±.5°	CONTACT DIMENSIONS (UNLESS SPECIFIED) mm INCH 4 PLACES ±.13 ±.01 3 PLACES ±.13 ±.01 2 PLACES ±.13 ±.01 1 PLACE ±.3 ±.1 ANGULAR ±.5°	DRAWN BY DATE RSTONE 2014/07/25 CHECKED BY DATE G FARNSW APPROVED BY DATE JFMURPHY 2014/10/16	TITLE TERMINAL PLUG 5.0MM HORIZONTAL, SNAP MT	DIMENSIONS METRIC THIRD ANGLE PROJECTION	
		DRAFT WHERE APPLICABLE MUST REMAIN WITHIN DIMENSIONS		MATERIAL NO. SEE CHART	MOLEX INCORPORATED	SHEET NO. 1 OF 1	
		THIS DRAWING CONTAINS INFORMATION THAT IS PROPRIETARY TO MOLEX INCORPORATED AND SHOULD NOT BE USED WITHOUT WRITTEN PERMISSION					
		DOCUMENT NO. SD-39754-001					