

## Excellent Integrated System Limited

Stocking Distributor

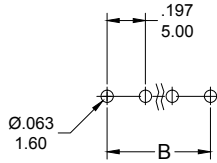
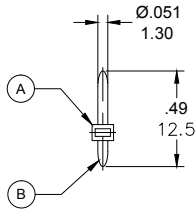
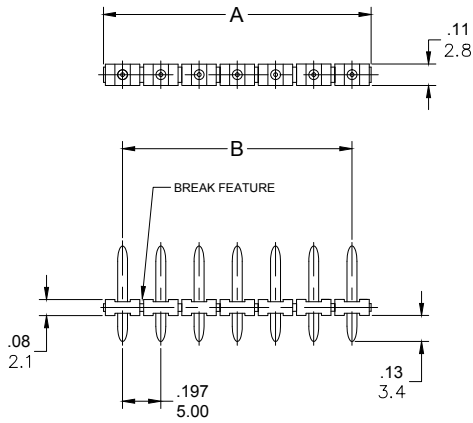
Click to view price, real time Inventory, Delivery & Lifecycle Information:

[Molex Connector Corporation](#)  
[0397560009](#)

For any questions, you can email us directly:

[sales@integrated-circuit.com](mailto:sales@integrated-circuit.com)

PART NUMBER DATA							
CIRCUITS	PART NUMBER	ENGINEERING NUMBER	COLOR	A IN mm	B IN mm		
2	397560002	M450P-00-1-02-3	GREEN	.39	10.0	.197	5.00
3	397560003	M450P-00-1-03-3	GREEN	.59	15.0	.394	10.00
4	397560004	M450P-00-1-04-3	GREEN	.79	20.0	.591	15.00
5	397560005	M450P-00-1-05-3	GREEN	.98	25.0	.787	20.00
6	397560006	M450P-00-1-06-3	GREEN	1.18	30.0	.984	25.00
7	397560007	M450P-00-1-07-3	GREEN	1.38	35.0	1.181	30.00
8	397560008	M450P-00-1-08-3	GREEN	1.57	40.0	1.378	35.00
9	397560009	M450P-00-1-09-3	GREEN	1.77	45.0	1.575	40.00
10	397560010	M450P-00-1-10-3	GREEN	1.97	50.0	1.772	45.00
11	397560011	M450P-00-1-11-3	GREEN	2.17	55.0	1.969	50.00
12	397560012	M450P-00-1-12-3	GREEN	2.36	60.0	2.165	55.00
13		M450P-00-1-13-3	GREEN	2.56	65.0	2.362	60.00
14		M450P-00-1-14-3	GREEN	2.76	70.0	2.559	65.00
15		M450P-00-1-15-3	GREEN	2.95	75.0	2.756	70.00
16		M450P-00-1-16-3	GREEN	3.15	80.0	2.953	75.00
17		M450P-00-1-17-3	GREEN	3.35	85.0	3.150	80.00
18		M450P-00-1-18-3	GREEN	3.54	90.0	3.346	85.00
19		M450P-00-1-19-3	GREEN	3.74	95.0	3.543	90.00
20		M450P-00-1-20-3	GREEN	3.94	100.0	3.740	95.00
21		M450P-00-1-21-3	GREEN	4.13	105.0	3.937	100.00
22		M450P-00-1-22-3	GREEN	4.33	110.0	4.134	105.00
23		M450P-00-1-23-3	GREEN	4.53	115.0	4.331	110.00
24		M450P-00-1-24-3	GREEN	4.72	120.0	4.528	115.00
25		M450P-00-1-25-3	GREEN	4.92	125.0	4.724	120.00
26		M450P-00-1-26-3	GREEN	5.12	130.0	4.921	125.00
27		M450P-00-1-27-3	GREEN	5.31	135.0	5.118	130.00
28		M450P-00-1-28-3	GREEN	5.51	140.0	5.315	135.00
29		M450P-00-1-29-3	GREEN	5.71	145.0	5.512	140.00
30		M450P-00-1-30-3	GREEN	5.91	150.0	5.709	145.00



ENGINEERING NUMBER LEGEND  
**M450P-00-1-XX-3**  
 SERIES: M450P, STYLE: 00, PITCH: 1, PDLES: XX, COLOR: 3  
 CONTACT FACTORY FOR OPTIONAL COLORS

REF. THE LAST 2 DIGITS OF THE PART NUMBER EQUAL CIRCUIT COUNT

SPECIFICATIONS

- MATERIAL:  
 A. BODY: PA66, UL94V-0  
 B. TERMINAL: BRASS, TIN PLATED
- RATING: 300V, 10A
- OPERATING TEMPERATURE: -40°C TO +105°C
- MAX SOLDERING: 260°C (+500°F) FOR 5 SECONDS
- DIMS SHOWN ARE FOR REFERENCE ONLY

RELEASED EC NO: JPC2015-0082 DRAWN: RSTONE 2014/07/28 CHECKED: G FARNSW APPR: J MURPHY 2014/10/16	QUALITY SYMBOLS ▽=0 ∇=0	GENERAL TOLERANCES (UNLESS SPECIFIED) <table border="1"> <tr><th></th><th>mm</th><th>INCH</th></tr> <tr><td>4 PLACES</td><td>±---</td><td>±---</td></tr> <tr><td>3 PLACES</td><td>±---</td><td>±.005</td></tr> <tr><td>2 PLACES</td><td>±0.13</td><td>±.01</td></tr> <tr><td>1 PLACE</td><td>±0.3</td><td>±---</td></tr> </table>		mm	INCH	4 PLACES	±---	±---	3 PLACES	±---	±.005	2 PLACES	±0.13	±.01	1 PLACE	±0.3	±---	DIMENSION STYLE IN/MM	SCALE ---	DESIGN UNITS METRIC	THIRD ANGLE PROJECTION
		mm	INCH																		
	4 PLACES	±---	±---																		
	3 PLACES	±---	±.005																		
2 PLACES	±0.13	±.01																			
1 PLACE	±0.3	±---																			
DRAFT WHERE APPLICABLE MUST REMAIN WITHIN DIMENSIONS	DRAWN BY: RSTONE 2014/07/28 CHECKED BY: G FARNSW APPROVED BY: JFMURPHY 2014/10/16	MATERIAL NO. <b>SEE CHART</b>	TITLE <b>PIN HEADER BREAKABLE          5.00MM, VERTICAL          1.30MM PIN DIA</b>	MOLEX INCORPORATED	SHEET NO. <b>1 OF 1</b>																
SIZE <b>B</b>	THIS DRAWING CONTAINS INFORMATION THAT IS PROPRIETARY TO MOLEX INCORPORATED AND SHOULD NOT BE USED WITHOUT WRITTEN PERMISSION																				