

Excellent Integrated System Limited

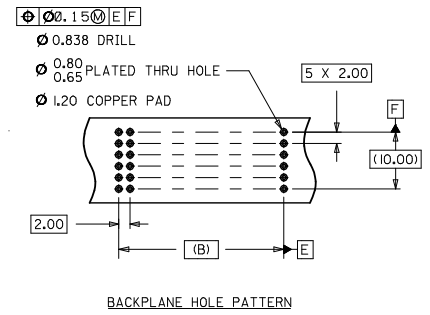
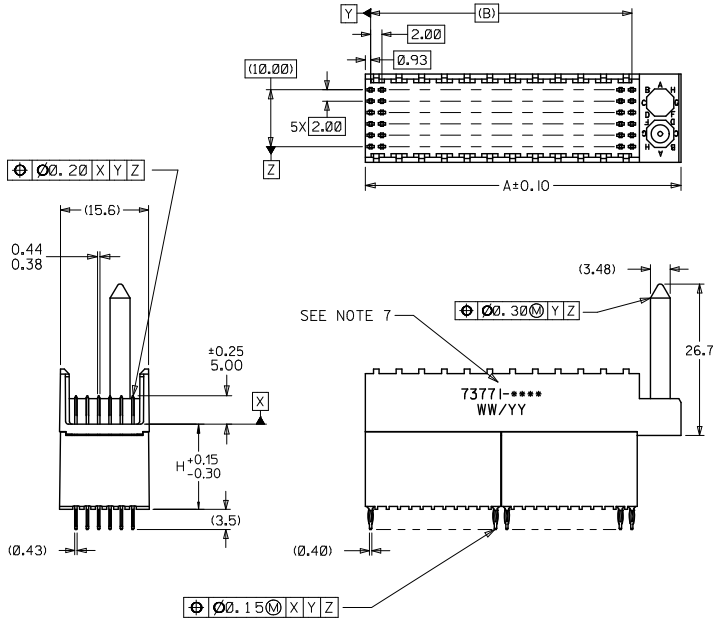
Stocking Distributor

Click to view price, real time Inventory, Delivery & Lifecycle Information:

[Molex Connector Corporation](#)
[0737711300](#)

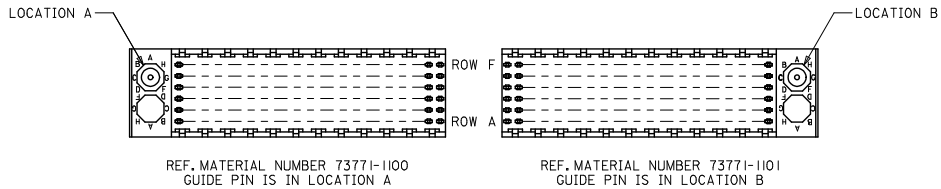
For any questions, you can email us directly:
sales@integrated-circuit.com

ASSEMBLY P/N	TOTAL NUMBER OF SIGNAL CONTACTS	DIM "A"	DIM "B"	DIM "H"
73771-01**	72	31.6	22.00	15.05
73771-02**	72	31.6	22.00	6.05
73771-03**	72	31.6	22.00	10.05
73771-11**	144	55.6	46.00	15.05
73771-12**	144	55.6	46.00	6.05
73771-13**	144	55.6	46.00	10.05

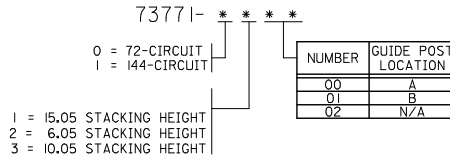


- NOTES:
1. MATERIALS: HOUSING-LIQUID CRYSTAL POLYMER (LCP), GLASS FILLED, UL 94V-0, COLOR: BLACK, TERMINAL-PHOSPHOR BRONZE
 2. FINISH: SELECTIVE GOLD (Au) IN CONTACT AREA, 0.00076 mm MINIMUM THICKNESS; SELECTIVE MATTE TIN (Sn) ON TAILS, NICKEL (Ni) OVERALL.
 3. THIS PART CONFORMS TO MOLEX PRODUCT SPECIFICATION PS-73780-999.
 4. THIS PART CONFORMS TO COSMETIC SPECIFICATION PS-45499-002 CLASS C.
 5. RECOMMENDED PCB THICKNESS: 2.50 MIN.
 6. PACKAGE PER PK-70873-0870, PK-70873-0871 OR PK-70873-0875.
 7. PART MARKED WITH PART NUMBER AND DATE CODE APPROXIMATELY WHERE SHOWN.

LEAD FREE CONVERSION EC NO: UCP2015-3253 DRAWN BY: J.B. INGHAM CHECKED BY: S. SREED APPROVED BY: C.B. IXLER	QUALITY SYMBOLS ▽=0 ▽=0 ▽=0	GENERAL TOLERANCES (UNLESS SPECIFIED)		DIMENSION STYLE		SCALE	DESIGN UNITS	THIRD ANGLE PROJECTION	
		mm	INCH	MM ONLY	DATE	2:1	METRIC		
		4 PLACES	±	---	---			SALES ASSEMBLY HDM	
		3 PLACES	±	---	---			BACKPLANE STACKING MOD	
		2 PLACES	±	0.05	---			CLOSED END OPT PRESSFIT	
		1 PLACE	±	0.10	---				
		0 PLACE	±	---	---				
		ANGULAR ±1/2°		MATERIAL NO.		DOCUMENT NO.		SHEET NO.	
		DRAFT WHERE APPLICABLE MUST REMAIN WITHIN DIMENSIONS		SEE CHART		SD-73771-001		1 OF 2	
		THIS DRAWING CONTAINS INFORMATION THAT IS PROPRIETARY TO MOLEX INCORPORATED AND SHOULD NOT BE USED WITHOUT WRITTEN PERMISSION							



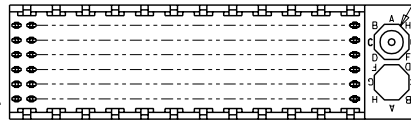
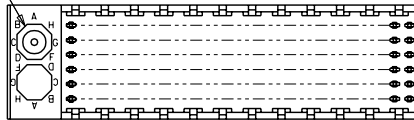
MATERIAL NUMBER ASSIGNMENT



LEAD FREE CONVERSION EC NO: UCP/2015-3253 DRAWN BY: PPLE 2013/02/04 CHECKED BY: CHK 2013/02/04 APPROVED BY: APPR 2013/08/05	QUALITY SYMBOLS ∇=0 ∇=0 ∇=0	GENERAL TOLERANCES (UNLESS SPECIFIED)		DIMENSION STYLE MM ONLY		SCALE 1:1	DESIGN UNITS METRIC	THIRD ANGLE PROJECTION	
		4 PLACES ± --- ± ---	3 PLACES ± --- ± ---	DRAWN BY JB INGHAM	DATE 1997/03/07	TITLE SALES ASSEMBLY HDM BACKPLANE STACKING MOD CLOSED END OPT PRESSFIT			
		2 PLACES ± 0.05 ± ---	1 PLACE ± 0.10 ± ---	CHECKED BY SREED	DATE 1997/03/07	APPROVED BY CBIXLER			
		0 PLACE ± --- ± ---	ANGULAR ± 1/2°	MATERIAL NO. SEE TABLE		DOCUMENT NO. SD-73771-001	SHEET NO. 2 OF 2		
DRAFT WHERE APPLICABLE MUST REMAIN WITHIN DIMENSIONS		THIS DRAWING CONTAINS INFORMATION THAT IS PROPRIETARY TO MOLEX INCORPORATED AND SHOULD NOT BE USED WITHOUT WRITTEN PERMISSION							

LOCATION A

LOCATION B



REF. MATERIAL NUMBER 73771-1100
GUIDE PIN IS IN LOCATION A

REF. MATERIAL NUMBER 73771-1101
GUIDE PIN IS IN LOCATION B

MATERIAL NUMBER ASSIGNMENT

73771- * * * *

0 = 72-CIRCUIT
1 = 144-CIRCUIT

1 = 15.05 STACKING HEIGHT
2 = 6.05 STACKING HEIGHT
3 = 10.05 STACKING HEIGHT

NUMBER	GUIDE POST LOCATION
00	A
01	B
02	N/A

SEE SHEET 1 EC NO. UDT2000-1073 DRAWN BY BINGHAM 0005/08 CHKD BY REED 0005/08 APPR BY BIXLER 0005/08	QUALITY SYMBOLS MAJOR = 0 CRITICAL = 0 C = 0	GENERAL TOLERANCES: (UNLESS SPECIFIED)		SCALE NO: NE	DESIGN UNITS	THIRD ANGLE PROJECTION	DIMENSIONS: mm INCH mm mm INCH mm ONLY	SHT REV REVISE ON CAD ONLY
		4 PLACES ±0.	±.	mm	INCH			
REV	DESCRIPTION	3 PLACES ±0.	±.	DRAWN BY & DATE JBINGHAM 97/03/07	CHECKED BY & DATE SREED 97/03/07	TITLE: SALES ASSEMBLY HDM BACKPLANE STACKING MODULE POLAR/GUIDE OPTION PRESSFIT		
		2 PLACES ±0.N/A	±.	APPROVED BY & DATE CBIXLER 97/03/07	MOLEX INCORPORATED			
		1 PLACE ±0.N/A	±.	CAD FILENAME S73771X2.DGN	MATERIAL NO. SEE CHART	DRAWING NO. SD-73771-001	SHEET NO. 2	SIZE B
DRAFT WHERE APPLICABLE MUST REMAIN WITHIN DIMENSIONS		THIS DRAWING CONTAINS INFORMATION THAT IS PROPRIETARY TO MOLEX INCORPORATED AND SHOULD NOT BE USED WITHOUT WRITTEN PERMISSION.						