

Excellent Integrated System Limited

Stocking Distributor

Click to view price, real time Inventory, Delivery & Lifecycle Information:

[Cinch Connectivity Solutions](#)

[CPL-5210-10-TNC-79](#)

For any questions, you can email us directly:

sales@integrated-circuit.com

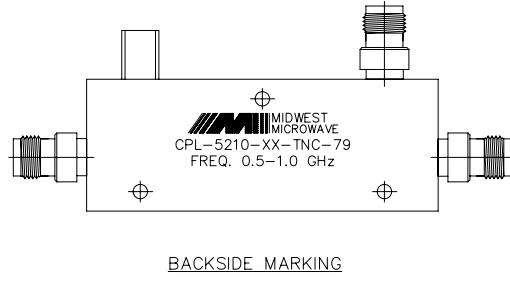
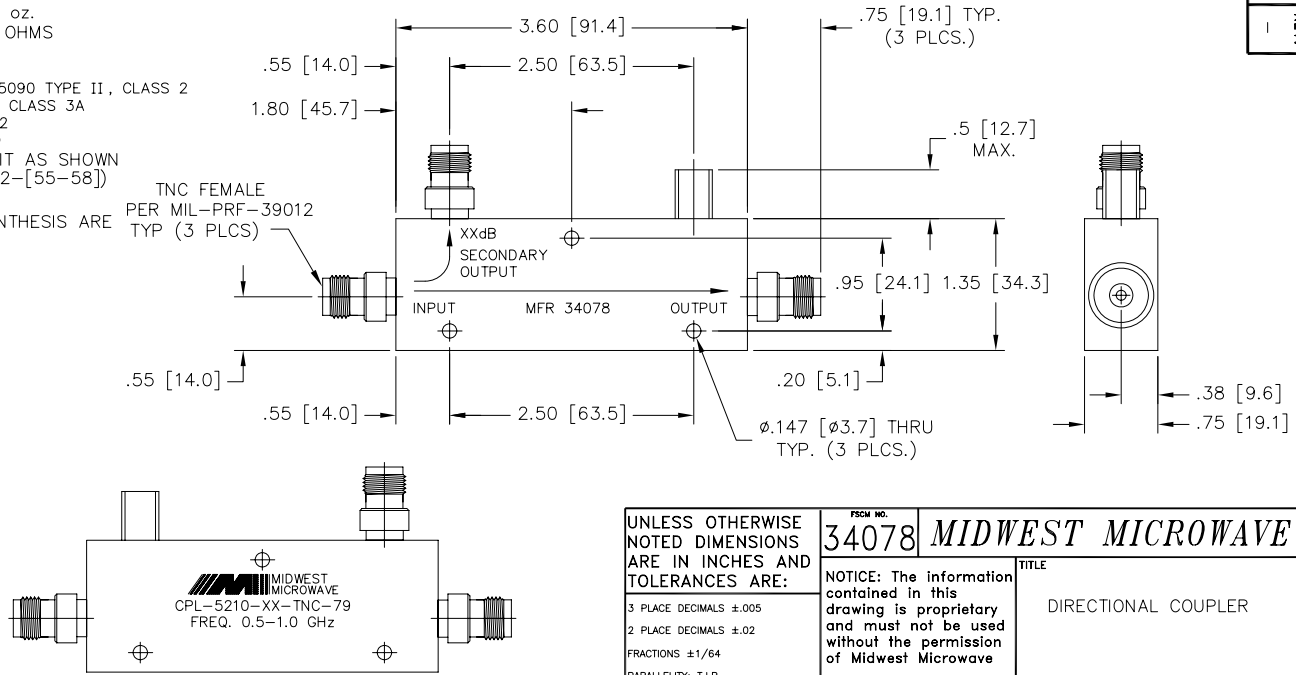
- NOTES:
- 1.0 ELECTRICAL SPECIFICATIONS:
 - 1.1 FREQUENCY RANGE: 0.5 to 1.0 GHz
 - 1.2 COUPLING: SEE TABLE
 - 1.3 FREQUENCY SENSITIVITY: SEE TABLE
 - 1.4 DIRECTIVITY: 25dB MIN.
 - 1.5 VSWR (MAX): 1.10:1 MAX.
 - 1.6 INSERTION LOSS: .15dB MAX. (EXCLUDING COUPLED POWER)
 - 1.7 POWER: SEE TABLE
 - 1.8 WEIGHT (MAX.): 8.6 oz.
 - 1.9 RF IMPEDANCE: 50 OHMS

- 2.0 FINISHING:
 - 2.1 GREY PER MIL-E-15090 TYPE II, CLASS 2 OVER MIL-C-5541 CLASS 3A MEETS MIL-F-14072 MEETS MIL-E-5400
 - 2.2 MARKING: MARK UNIT AS SHOWN (REF.: SLK-08154-82-[55-58])

3.0 DIMENSIONS IN PARENTHESIS ARE IN MILLIMETERS.

MIDWEST MODEL NUMBER CPL-5210-XX-TNC-79	NOMINAL COUPLING	FREQUENCY SENSITIVITY	POWER (WATTS)		
			INPUT	REF	PEAK
CPL-5210-06-TNC-79	6 ±1.0dB	±0.60dB	50	4	4000
CPL-5210-10-TNC-79	10 ±1.0dB	±0.75dB	50	10	4000
CPL-5210-20-TNC-79	20 ±1.0dB	±0.75dB	50	50	4000
CPL-5210-30-TNC-79	30 ±1.0dB	±0.75dB	50	50	4000

MODEL NUMBER
CPL-5210-XX-TNC-79
REV. 1



UNLESS OTHERWISE NOTED DIMENSIONS ARE IN INCHES AND TOLERANCES ARE: 3 PLACE DECIMALS ±.005 2 PLACE DECIMALS ±.02 FRACTIONS ±1/64 PARALLELITY: T.I.R. FLATNESS: T.I.R. CONCENTRICITY: T.I.R. ANGLES AND PERPENDICULARITY: ±1'	FSCM NO. 34078	MIDWEST MICROWAVE
	NOTICE: The information contained in this drawing is proprietary and must not be used without the permission of Midwest Microwave	
TITLE DIRECTIONAL COUPLER		DRAWING NUMBER CPL-5210-XX-TNC-79
DRAWN/DATE S. ORLOV 6/2/05		ENG/DATE J. O'NEIL 6/7/05
CHECKED/DATE		APPROVED/DATE
SCALE: 1=1		SHEET 1 of 1

DATE	6/7/05
DESCRIPTION	RELEASED
REV.	1