

Excellent Integrated System Limited

Stocking Distributor

Click to view price, real time Inventory, Delivery & Lifecycle Information:

[Cinch Connectivity Solutions](#)

[CPL-5221-16-NNN-79](#)

For any questions, you can email us directly:

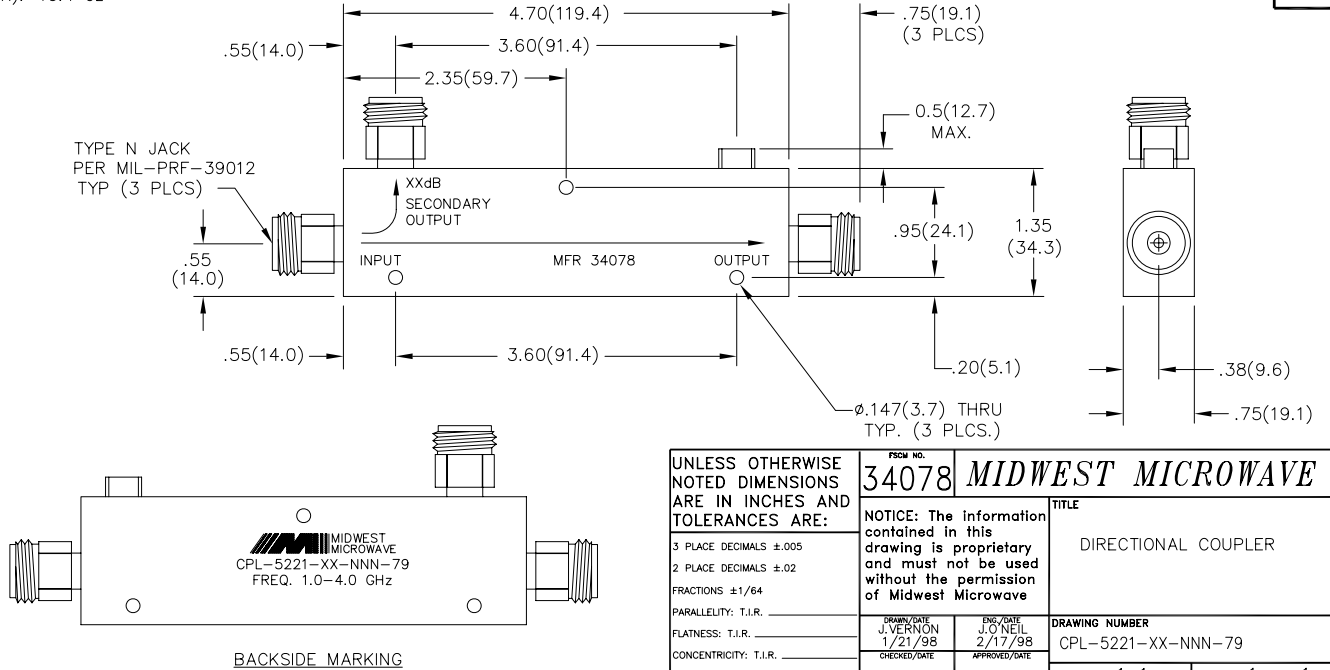
sales@integrated-circuit.com

- NOTES:
- ELECTRICAL SPECIFICATIONS:
 - FREQUENCY RANGE: 1.0 to 4.0 GHz
 - COUPLING: SEE TABLE
 - FREQUENCY SENSITIVITY: ± 0.6 dB
 - DIRECTIVITY: 20dB MIN.
 - VSWR (MAX): 1.30:1
 - INSERTION LOSS: 0.6dB MAX. (EXCLUDING COUPLED POWER)
 - POWER: SEE TABLE
 - RF IMPEDANCE: 50 OHMS
 - WEIGHT (MAX): 10.4 oz

- FINISHING:
 - GREY PER MIL-E-15090 TYPE II, CLASS 2 OVER MIL-C-5541 CLASS 3A MEETS MIL-F-14072 MEETS MIL-E-5400
 - MARKING: MARK UNIT AS SHOWN (REF.: SLK-08029-82-[40-43])
- DIMENSIONS IN PARENTHESIS ARE IN MILLIMETERS.

MIDWEST MODEL NUMBER CPL-5221-XX-NNN-79	COUPLING	POWER (WATTS)		
		INPUT	REF.	PEAK
CPL-5221-06-NNN-79	6 ± 1.0 dB	50	10	4000
CPL-5221-10-NNN-79	10 ± 1.0 dB	50	10	4000
CPL-5221-16-NNN-79	16 ± 1.0 dB	50	40	4000
CPL-5221-20-NNN-79	20 ± 1.0 dB	50	50	4000

MODEL NUMBER
CPL-5221-XX-NNN-79
REV. -1



UNLESS OTHERWISE NOTED DIMENSIONS ARE IN INCHES AND TOLERANCES ARE: 3 PLACE DECIMALS ± 0.005 2 PLACE DECIMALS ± 0.02 FRACTIONS $\pm 1/64$ PARALLELITY: T.I.R. _____ FLATNESS: T.I.R. _____ CONCENTRICITY: T.I.R. _____ ANGLES AND PERPENDICULARITY: $\pm 1'$	PSCW NO. 34078	MIDWEST MICROWAVE
	TITLE DIRECTIONAL COUPLER	
DRAWING NUMBER CPL-5221-XX-NNN-79		
SCALE: 1=1 SHEET 1 of 1		

DATE	2/23/98	4/22/05
DESCRIPTION	RELEASED	ADDED TITLER/LOCK
REV.	1	T