

Excellent Integrated System Limited

Stocking Distributor

Click to view price, real time Inventory, Delivery & Lifecycle Information:

[Cinch Connectivity Solutions](#)

[PWD-5512-02-SMA-79](#)

For any questions, you can email us directly:

sales@integrated-circuit.com

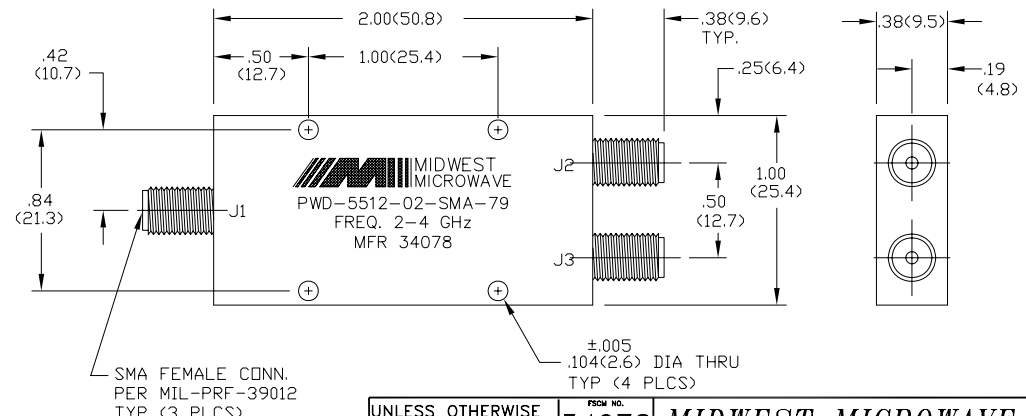
MODEL NUMBER
PWD-5512-02-SMA-79
REV.
-1

- NOTES:
- 1.0 ELECTRICAL SPECIFICATIONS:
 - 1.1 FREQUENCY RANGE: 2.0 to 4.0 GHz
 - 1.2 INSERTION LOSS: 0.4dB MAX.
 - 1.3 ISOLATION: 20dB MIN.
 - 1.4 VSWR (MAX): 1.35:1
 - 1.5 OUTPUT UNBALANCE:
 - 1.5.1 AMPLITUDE: 0.20dB MAX.
 - 1.5.2 PHASE: 2° MAX.
 - 1.6 MAXIMUM INPUT POWER: 3 WATTS
(WITH OUTPUT LOADS OF VSWR < 2.0:1)
 - 1.7 OPERATING TEMP RANGE: -65°C to +125°C

- 3.0 MARKING:
MARK UNIT AS SHOWN.
- 4.0 DIMENSIONS IN PARENTHESIS ARE
IN MILLIMETERS.
- 5.0 WEIGHT: 2.20 Oz. (60 GRAMS)

NOTE: NO DATA REQUIRED

- 2.0 FINISH:
 - 2.1 EPOXY SEAL WITH EMERSON CUMING ECCOBOND.
45 EPOXY AND CATALYST 15
 - 2.2 GREY OVER MIL-E-15090 TYPE II, CLASS 2
OVER MIL-C-5541 CLASS 3A
MEETS MIL-F-14072
MEETS MIL-E-5400 AND MIL-E-16400V.



REV.	DESCRIPTION	DATE
1	RELEASED	5/21/92
T	ADDED TITLER BLOCK	7/19/05

UNLESS OTHERWISE NOTED DIMENSIONS ARE IN INCHES AND TOLERANCES ARE: 3 PLACE DECIMALS ±.005 2 PLACE DECIMALS ±.02 FRACTIONS ±1/64 PARALLELITY: T.J.R. _____ FLATNESS: T.J.R. _____ CONCENTRICITY: T.J.R. _____ ANGLES AND PERPENDICULARITY: ±1°	PSCM NO. 34078	MIDWEST MICROWAVE
	TITLE POWER DIVIDER	
NOTICE: The information contained in this drawing is proprietary and must not be used without the permission of Midwest Microwave	DRAWN/DATE A.BEATTY 5/14/92	ENG./DATE P.GOODMAN 5/20/92
	CHECKED/DATE	APPROVED/DATE
	DRAWING NUMBER PWD-5512-02-SMA-79	SCALE: 2=1
	SHEET 1 of 1	