

## Excellent Integrated System Limited

Stocking Distributor

Click to view price, real time Inventory, Delivery & Lifecycle Information:

[Cinch Connectivity Solutions](#)

[PWD-5520-03-SMA-79](#)

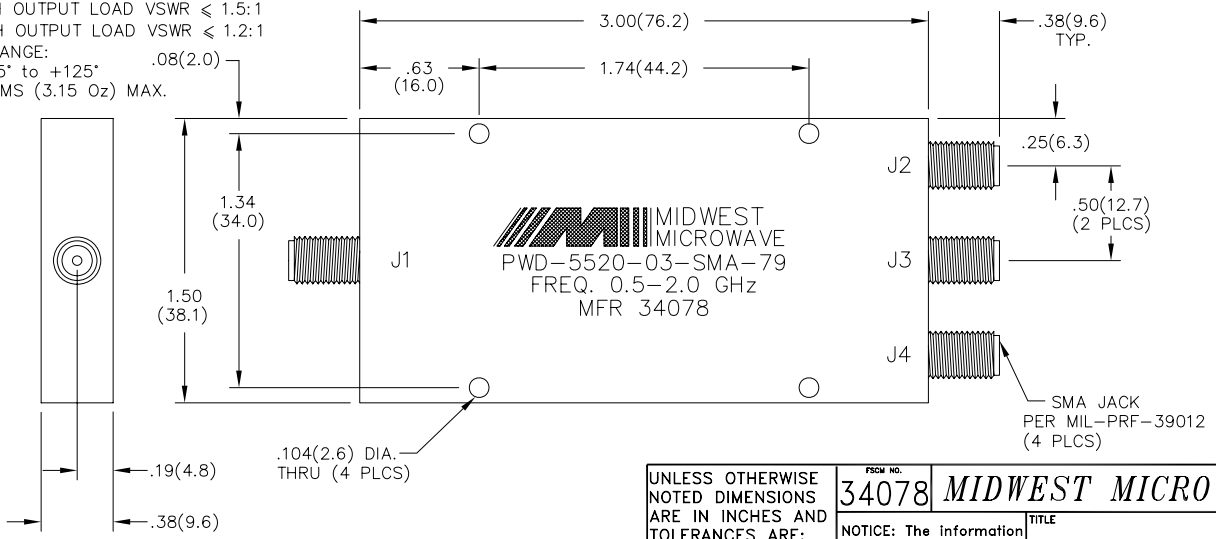
For any questions, you can email us directly:

[sales@integrated-circuit.com](mailto:sales@integrated-circuit.com)

MODEL NUMBER  
PWD-5520-03-SMA-79  
REV. A

- NOTES:  
1.0 ELECTRICAL SPECIFICATIONS:  
1.1 FREQUENCY RANGE: 0.5 to 2.0 GHz  
1.2 INSERTION LOSS: 1.0dB MAX.  
1.3 ISOLATION: 15dB MIN.  
1.4 VSWR: 1.5:1 MAX  
1.5 OUTPUT UNBALANCE:  
AMPLITUDE: 0.5dB MAX.  
PHASE: 5° MAX.  
1.6 MAX. INPUT POWER:  
5 WATTS WITH OUTPUT LOAD VSWR ≤ 2.0:1  
12 WATTS WITH OUTPUT LOAD VSWR ≤ 1.5:1  
30 WATTS WITH OUTPUT LOAD VSWR ≤ 1.2:1  
1.7 TEMPERATURE RANGE:  
OPERATING: -55° to +125°  
1.8 WEIGHT: 89 GRAMS (3.15 Oz) MAX.

- 2.0 FINISHING:  
2.1 GREY PER MIL-E-15090 TYPE II, CLASS 2  
OVER MIL-C-5541 CLASS 3A  
MEETS MIL-F-14072  
MEETS MIL-E-5400  
2.2 MARKING: MARK UNIT AS SHOWN  
(REF.: SLK-08002-82-01)  
3.0 DIMENSIONS IN PARENTHESIS ARE  
IN MILLIMETERS.



REV.	DESCRIPTION	DATE
1	RELEASED	6/22/95
A	ECN 19458	11/4/03

UNLESS OTHERWISE NOTED DIMENSIONS ARE IN INCHES AND TOLERANCES ARE: 3 PLACE DECIMALS ±.005 2 PLACE DECIMALS ±.02 FRACTIONS ±1/64 PARALLELITY: T.J.R. _____ FLATNESS: T.J.R. _____ CONCENTRICITY: T.J.R. _____ ANGLES AND PERPENDICULARITY: ±1°	PSCW NO. <b>34078</b>		<b>MIDWEST MICROWAVE</b>	
	NOTICE: The information contained in this drawing is proprietary and must not be used without the permission of Midwest Microwave		TITLE POWER DIVIDER	
DRAWN/DATE A.BEATTY 6/22/95	ENG./DATE P.GOODMAN 6/22/95	DRAWING NUMBER PWD-5520-03-SMA-79		
CHECKED/DATE	APPROVED/DATE	SCALE: 2=1	SHEET 1 of 1	