

Excellent Integrated System Limited

Stocking Distributor

Click to view price, real time Inventory, Delivery & Lifecycle Information:

[Cinch Connectivity Solutions](#)

[PWD-5522-12-SMA-79](#)

For any questions, you can email us directly:

sales@integrated-circuit.com

NOTES:

1.0 SPECIFICATIONS:

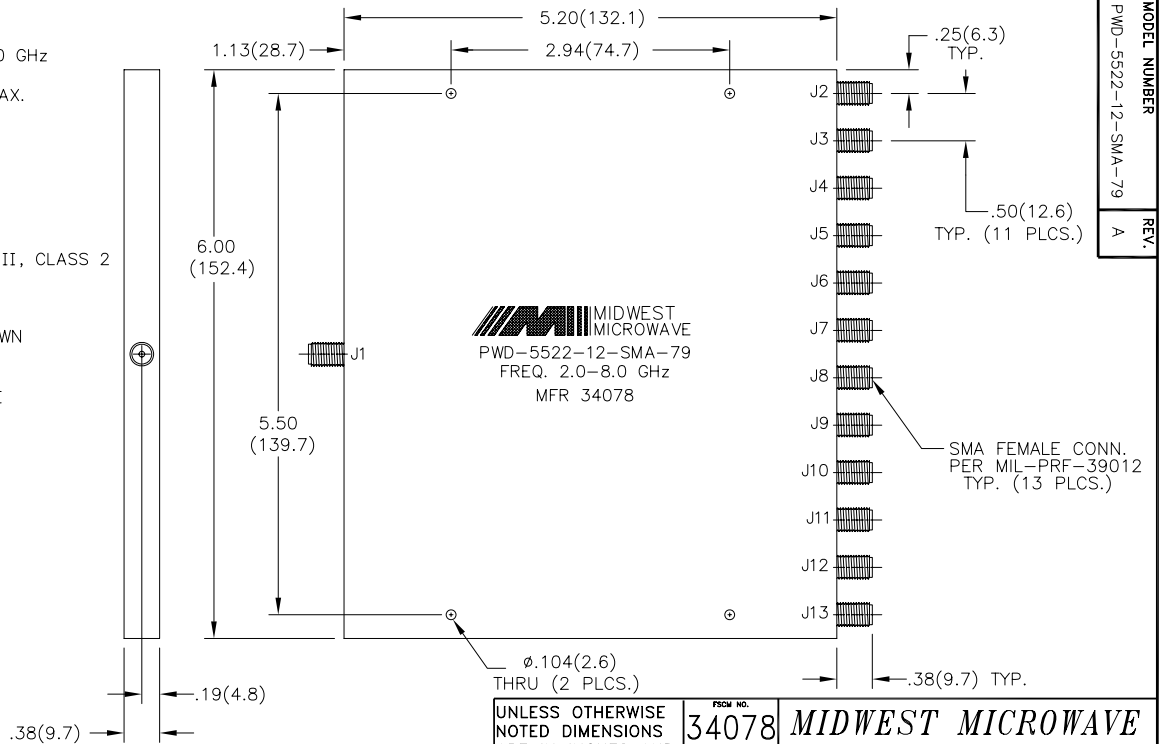
- 1.1 FREQUENCY RANGE: 2.0 to 8.0 GHz
- 1.2 INSERTION LOSS: 1.4dB MAX.
- 1.3 AMPLITUDE BALANCE: 1.0dB MAX.
- 1.4 PHASE BALANCE: 15° MAX.
- 1.5 VSWR: 1.50:1 MAX.
- 1.6 ISOLATION: 15dB MIN.
- 1.7 INPUT POWER: 30 WATTS MAX.
- 1.8 WEIGHT: 21.2 Oz (600 GRAMS)

2.0 FINISH:

GREY OVER MIL-E-15090 TYPE II, CLASS 2
OVER MIL-C-5541 CLASS 3A
MEETS MIL-F-14072
MEETS MIL-E-5400

2.1 MARKING: MARK UNIT AS SHOWN
(REF.: SLK-08068-82-01)

3.0 DIMENSIONS IN PARENTHESIS ARE
IN MILLIMETERS.



MODEL NUMBER
PWD-5522-12-SMA-79
REV.
A

REV.	DESCRIPTION	DATE
1	RELEASED	4/11/01
A	ECN 17954	5/14/01

UNLESS OTHERWISE NOTED DIMENSIONS ARE IN INCHES AND TOLERANCES ARE: 3 PLACE DECIMALS ±.005 2 PLACE DECIMALS ±.02 FRACTIONS ±1/64 PARALLELITY: T.J.R. _____ FLATNESS: T.J.R. _____ CONCENTRICITY: T.J.R. _____ ANGLES AND PERPENDICULARITY: ±1°	PSCM NO. 34078	MIDWEST MICROWAVE
	NOTICE: The information contained in this drawing is proprietary and must not be used without the permission of Midwest Microwave	
	TITLE POWER DIVIDER	
DRAWN/DATE L. BROWN 10/21/97	ENG./DATE P. GOODMAN 4/9/01	DRAWING NUMBER PWD-5522-12-SMA-79
CHECKED/DATE	APPROVED/DATE	SCALE: 1=1 SHEET 1 of 1