

Excellent Integrated System Limited

Stocking Distributor

Click to view price, real time Inventory, Delivery & Lifecycle Information:

[Bel Fuse Inc.](#)
[M3933/14-17N](#)

For any questions, you can email us directly:
sales@integrated-circuit.com

NOTES:

1.0 SPECIFICATIONS:

- 1.1 FREQUENCY RANGE: DC to 12.4
- 1.2 IMPEDANCE: 50 OHMS NOMINAL
- 1.3 VSWR MAX.:
DC to 4.0 GHz: 1.15:1
4.0 to 8.0 GHz: 1.20:1
8.0 to 12.4 GHz: 1.25:1
- 1.4 ATTENUATION & ACCURACY: SEE TABLE
- 1.5 MAXIMUM INPUT POWER
1.5.1 2 WATTS AVG. AT +25°C DERATED LINEARLY TO 0.5 WATTS AT +125°C
1.5.2 200 WATTS PEAK
- 1.6 OPERATING TEMP. RANGE:
-55°C to +125°C
- 1.7 WIEGHT: SEE TABLE

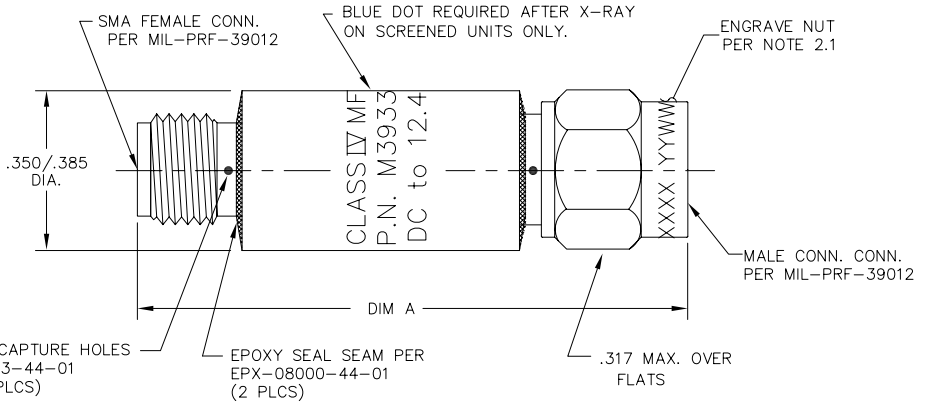
MMI MODEL NO.	ATTEN. (dB)	DEVIATION DC to 12.4 GHz	WEIGHT Oz. MAX.	DIM A MAX.	MMI MODEL NO.	ATTEN. (dB)	DEVIATION DC to 12.4 GHz	WEIGHT Oz. MAX.	DIM A MAX.
M3933/14-XX	3	±0.3	0.5	1.24	M3933/14-11	8	±0.4	0.5	1.24
M3933/14-01	3	±0.3	0.5	1.24	M3933/14-12	9	±0.4	0.5	1.24
M3933/14-02	6	±0.3	0.5	1.24	M3933/14-13	30	±0.9	0.8	1.85
M3933/14-03	10	±0.3	0.5	1.24	M3933/14-14	40	±0.9	0.8	1.85
M3933/14-04	20	±0.5	0.5	1.24	M3933/14-17	28	±0.9	0.7	1.85
M3933/14-05	15	±0.5	0.5	1.24	M3933/14-18	16	±0.5	0.5	1.24
M3933/14-06	1	±0.3	0.5	1.24	M3933/14-19	14	±0.5	0.5	1.24
M3933/14-07	2	±0.3	0.5	1.24	M3933/14-20	13	±0.5	0.5	1.24
M3933/14-08	4	±0.3	0.5	1.24	M3933/14-21	12	±0.5	0.5	1.24
M3933/14-09	5	±0.3	0.5	1.24	M3933/14-22	11	±0.5	0.5	1.24
M3933/14-10	7	±0.4	0.5	1.24	M3933/14-23	1.5	±0.3	0.5	1.24
					M3933/14-24	31	±0.9	0.8	1.85

2.0 MARKING:

- 2.1 ENGRAVE SERIAL NO. AND DATE CODE ON NUT AS SHOWN.
- 2.2 MARK BODY AS SHOWN. (REF.: INK-09252-27-XX)

3.0 TESTING:

TEST IN CONJUNCTION WITH
ATP-07839-60-01 FOR SCREENED UNITS.
ATP-09210-60-01 FOR NON-SCREENED UNITS.



4.0 BAG MARKING:

SEE MODEL NO. FOR LAST 3 DIGITS
MODEL M3933/14-YYY
ATTENUATOR FIXED COAXIAL LINE
2 WATTS AVERAGE INPUT POWER
FREQ. RANGE: DC-12.4 GHz
MFR 34078
LOT NO. _____
DATE CODE: YYWW YEAR & WEEK

UNLESS OTHERWISE NOTED DIMENSIONS ARE IN INCHES AND TOLERANCES ARE:	FSCM NO.	34078	MIDWEST MICROWAVE
	NOTICE: The information contained in this drawing is proprietary and must not be used without the permission of Midwest Microwave		
3 PLACE DECIMALS ±.005 2 PLACE DECIMALS ±.02 FRACTIONS ±1/64 PARALLELITY: T.I.R. _____ FLATNESS: T.I.R. _____ CONCENTRICITY: T.I.R. _____ ANGLES AND PERPENDICULARITY: ±1'	TITLE ATTENUATOR		DRAWING NUMBER M3933/14-XX(N or S)
DRAWN/DATE A. BEATTY 4/8/94	ENG/DATE G. KOZAK 4/18/94	CHECKED/DATE M. HOLLMAN 4/15/94	APPROVED/DATE
SCALE: 5=1		SHEET 1 of 1	

REV.	DESCRIPTION	DATE
I	RELEASED	5/30/89
A	ECR 7780	11/15/90
B	ECR 7880	1/16/91
C	ECR 10218	1/30/91
CI	UPDATE MOD. NO.	1/25/93
D	ECN 13483	4/8/94
E	ECN 14231	1/16/95
F	ECN 16867	2/3/98
G	ECN 18865	12/12/02
H	ECN 20764	3/10/06
J	ECN 21462	8/17/07