

## Excellent Integrated System Limited

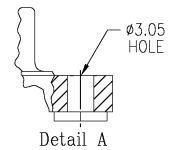
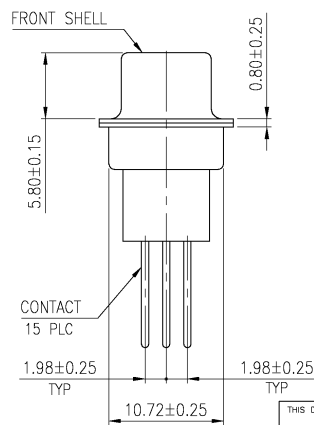
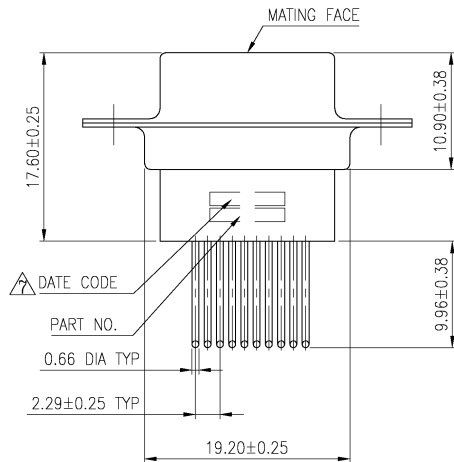
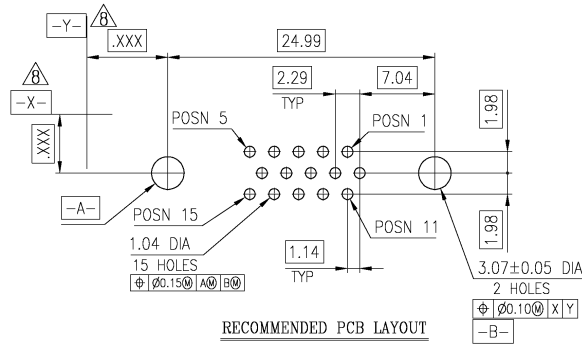
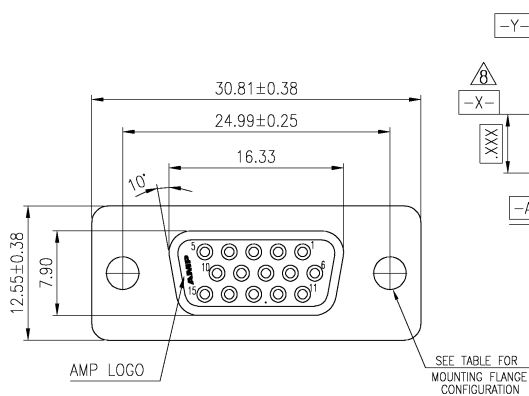
Stocking Distributor

Click to view price, real time Inventory, Delivery & Lifecycle Information:



[TE Connectivity AMP Connectors](#)  
[750360-1](#)

For any questions, you can email us directly:


[sales@integrated-circuit.com](mailto:sales@integrated-circuit.com)



Tray	Detail A	30 $\mu$ "	750360-4
Tray	Detail A	15 $\mu$ "	750360-3
Tray	Detail A	Gold flash	750360-1
Packaging	Mounting Flange	Contact Finish	AMP Part No

THIS DRAWING IS A CONTROLLED DOCUMENT.		DWG DESIGNED BY DWG CASH	28AL002 28AL002 28AL002	 Tyco Electronics Corporation
DIMENSIONS: MM		TOLERANCES UNLESS OTHERWISE SPECIFIED	PART NO. PRODUCT SPEC APPLICATION SPEC	NAME AMPLIFIER HDP-22 15 POS RECEPTACLE, VERTICAL
	0 P.L.C 1 P.L.C 2 P.L.C 3 P.L.C 4 P.L.C 5 P.L.C	0.250 0.250 0.250 0.250 0.250	SIZE DATE CODE DRAWING NO.	RESTRICTED TO
MATERIAL	FINISH	WEIGHT	A2 00779 C=750360	SCALE 1:1 SHEET 1 OF 1 REV G
CUSTOMER DRAWING				

MATERIAL:

1. Housing: Nylon,UL 94V-0 rated  
Glass filled, Black.
  2. Contact: Phos. Bronze.
  3. Contact Plated: Gold Plated over 50u"  
Nickel underplated.
  4. Solder Tail: Sn/Pb Plated 120u" over 50u"  
Nickel underplated.
  5. Shell: Steel, Nickel Plated.
  6. Rivet: Brass, Nickel plated 30u" Min.
-  Four digit date code in this format.

Year ——— 01 45 ——— Manufacturing Week

⑧ Datums and basic dimensions established by customer.