

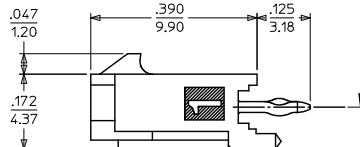
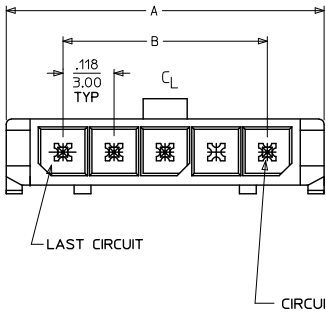
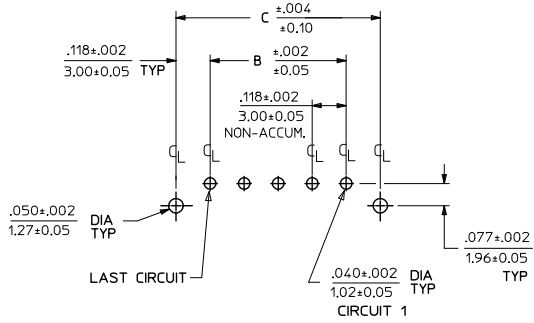
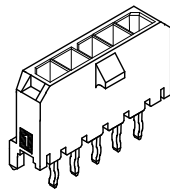
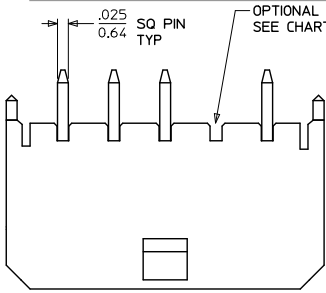
Excellent Integrated System Limited

Stocking Distributor

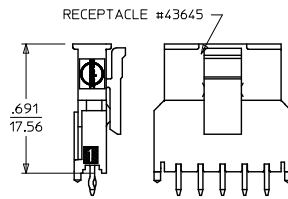
Click to view price, real time Inventory, Delivery & Lifecycle Information:

[Molex Connector Corporation](#)
[0436500716](#)

For any questions, you can email us directly:
sales@integrated-circuit.com



PCB LAYOUT: COMPONENT SIDE
RECOMMENDED PCB THICKNESS: .062/157



| CKTS | A | B | C |
|------|----------------|----------------|----------------|
| 2 | .380 9.65 | .118 3.00 | .354 9.00 |
| 3 | .498 12.65 | .236 6.00 | .472 12.00 |
| 4 | .616 15.65 | .354 9.00 | .591 15.00 |
| 5 | .734 18.64 | .472 12.00 | .709 18.00 |
| 6 | .852 21.64 | .591 15.00 | .827 21.00 |
| 7 | .970 24.64 | .709 18.00 | .945 24.00 |
| 8 | 1.088 27.64 | .827 21.00 | 1.063 27.00 |
| 9 | 1.206 30.63 | .945 24.00 | 1.181 30.00 |
| 10 | 1.325 33.66 | 1.063 27.00 | 1.299 33.00 |
| 11 | 1.443 36.65 | 1.181 30.00 | 1.417 36.00 |
| 12 | 1.561 39.65 | 1.299 33.00 | 1.535 39.00 |

| CKTS | FINISH A | | FINISH B | | FINISH C | |
|------|--------------|----------|--------------|----------|--------------|-------------|
| | MATERIAL NO: | VOID CKT | MATERIAL NO: | VOID CKT | MATERIAL NO: | VOID CKT |
| 02 | 43650-0215 | | 43650-0216 | | 43650-0217 | |
| 03 | 43650-0315 | | 43650-0316 | | 43650-0317 | |
| 04 | 43650-0415 | | 43650-0416 | | 43650-0417 | |
| 05 | 43650-0515 | | 43650-0516 | | 43650-0517 | |
| 06 | 43650-0615 | | 43650-0616 | | 43650-0617 | |
| 07 | 43650-0715 | | 43650-0716 | | 43650-0717 | |
| 08 | 43650-0815 | | 43650-0816 | | 43650-0817 | |
| 09 | 43650-0915 | | 43650-0916 | | 43650-0917 | |
| 10 | 43650-1015 | | 43650-1016 | | 43650-1017 | |
| 11 | 43650-1115 | | 43650-1116 | | 43650-1117 | |
| 12 | 43650-1215 | | 43650-1216 | | 43650-1217 | |
| 03 | 43650-0330 | 02 | | | | |
| 04 | | | 43650-0431 | 02,03 | 43650-0430 | 02,03 |
| 05 | 43650-9915 | 03 | | | | |
| 05 | 43650-0530 | 02,04 | | | | |
| 06 | 43650-0630 | 02,04,05 | | | | |
| 07 | 43650-0730 | 03,04,05 | | | 43650-0731 | 02,03,05,06 |

NOTES:

- HOUSING MATERIAL: LIQUID CRYSTAL POLYMER, GLASS FILLED, UL94V-0, COLOR: BLACK
TERMINAL MATERIAL: BRASS ALLOY
- FINISH:
A = .000060/(0.00152) MIN. REFLOWED MATTE TIN OVER .000050/(0.00127) MIN. NICKEL PLATE. (FINISH IS BRIGHT IN APPEARANCE, THICKNESS AS APPLIED PRIOR TO REFLOW)
B = .000015/(0.00038) MIN. SELECT GOLD IN CONTACT AREA .000100/(0.00254) MIN. SELECT MATTE TIN ON SOLDER TAILS BOTH OVER .000050/(0.00127) NICKEL OVERALL
C = .000030/(0.00076) MIN. SELECT GOLD IN CONTACT AREA .000100/(0.00254) MIN. SELECT MATTE TIN ON SOLDER TAILS BOTH OVER .000050/(0.00127) NICKEL OVERALL
- PRODUCT SPECIFICATION: PS-43650
- TRAY PACKAGED : SEE MOLEX DRAWING PK-70873-0811
- MATES WITH MICRO FIT (3.0) RECEPTACLE SERIES 43645
- THIS PART CONFORMS TO CLASS 'B' REQUIREMENTS OF PRODUCT SPECIFICATION PS-45499-002.

| | | | | |
|--|--------------------------------------|--|---|---|
| ADD 43650-***31 EC NO: UCP/2016-1703 DRAWN: JPOX 2015/10/24 CHKD: SMOSEK 2015/10/24 APPROV: SMITH 2016/07/06 | QUALITY SYMBOLS □=0 ▽=0 ○=0 | GENERAL TOLERANCES (UNLESS SPECIFIED) mm INCH 4 PLACES ± --- ± --- 3 PLACES ± --- ± .010 2 PLACES ± 0.25 ± .014 1 PLACE ± 0.36 ± --- 0 PLACE ± ± | DIMENSION STYLE IN/MM DRAWN BY DATE SAMIEC 2000/07/07 CHECKED BY DATE MUELLER 2000/07/07 APPROVED BY DATE EDGLEY 2000/07/07 | SCALE --- DESIGN UNITS METRIC THIRD ANGLE PROJECTION |
| | | ANGULAR ± 1/2° DRAFT WHERE APPLICABLE MUST REMAIN WITHIN DIMENSIONS | MATERIAL NO. SEE CHART DOCUMENT NO. SD-43650-006 | MICRO-FIT (3.0) SINGLE ROW / VERTICAL THRU HOLE / PEGS / TRAY molex |