

Excellent Integrated System Limited

Stocking Distributor

Click to view price, real time Inventory, Delivery & Lifecycle Information:

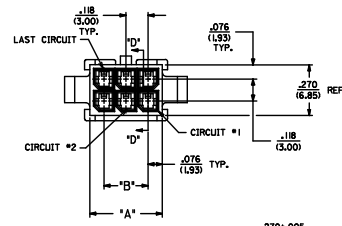
[Molex Connector Corporation](#)
[43020-1800](#)

For any questions, you can email us directly:

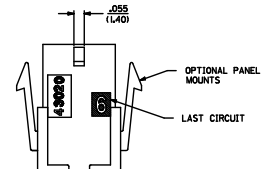
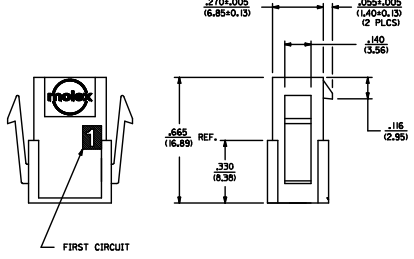
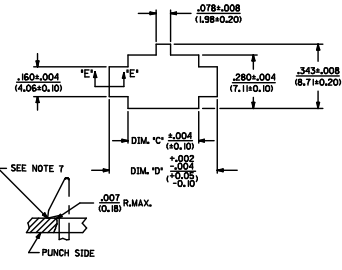
sales@integrated-circuit.com

| ASSEMBLY ITEM NUMBER | PART CHARACTERISTICS | | MATERIAL |
|----------------------|----------------------|--------------------|----------|
| | NUMBER OF POSITION | PANEL MOUNT OPTION | |
| 43020-0200 | 02 | YES | "B" |
| 43020-0201 | 02 | NO | |
| 43020-0400 | 04 | YES | |
| 43020-0401 | 04 | NO | |
| 43020-0600 | 06 | YES | |
| 43020-0601 | 06 | NO | |
| 43020-0800 | 08 | YES | |
| 43020-0801 | 08 | NO | |
| 43020-1000 | 10 | YES | |
| 43020-1001 | 10 | NO | |
| 43020-1200 | 12 | YES | |
| 43020-1201 | 12 | NO | |
| 43020-1400 | 14 | YES | |
| 43020-1401 | 14 | NO | |
| 43020-1600 | 16 | YES | |
| 43020-1601 | 16 | NO | |
| 43020-1800 | 18 | YES | |
| 43020-1801 | 18 | NO | |
| 43020-2000 | 20 | YES | |
| 43020-2001 | 20 | NO | |
| 43020-2200 | 22 | YES | |
| 43020-2201 | 22 | NO | |
| 43020-2400 | 24 | YES | |
| 43020-2401 | 24 | NO | |

| CKT. NO. | DIM. "A" | DIM. "B" | DIM. "C" | DIM. "D" |
|----------|--------------|--------------|--------------|--------------|
| 2 | .182(3.89) | N/A | .166(4.21) | .311(7.90) |
| 4 | .270(6.89) | .118(3.00) | .284(7.21) | .429(10.90) |
| 6 | .388(9.85) | .236(6.00) | .402(10.21) | .547(13.89) |
| 8 | .506(12.85) | .354(9.00) | .520(13.21) | .665(16.89) |
| 10 | .624(15.85) | .472(12.00) | .638(16.21) | .783(19.89) |
| 12 | .742(18.85) | .591(15.00) | .756(19.21) | .901(22.89) |
| 14 | .860(21.85) | .709(18.00) | .874(22.21) | 1.019(25.88) |
| 16 | .978(24.85) | .827(21.00) | .992(25.21) | 1.137(28.88) |
| 18 | 1.096(27.85) | .945(24.00) | 1.110(28.21) | 1.255(31.88) |
| 20 | 1.215(30.85) | 1.063(27.00) | 1.229(31.22) | 1.373(34.87) |
| 22 | 1.333(33.85) | 1.181(30.00) | 1.347(34.22) | 1.491(37.87) |
| 24 | 1.451(36.85) | 1.299(33.00) | 1.465(37.22) | 1.609(40.87) |

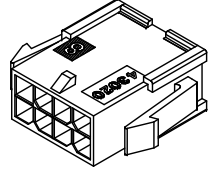
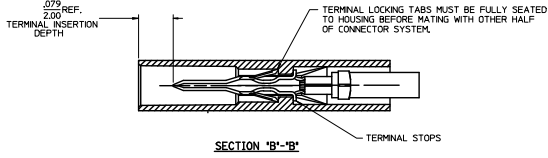


- NOTES:
- HOUSING MATERIAL:
 - "A" - UNFILLED POLYESTER, RATED UL, 94V-0, COLOR IS BLACK.
 - "B" - UNFILLED NYLON, RATED UL, 94V-0, HALOGEN-FREE, COLOR IS BLACK.
 - FINISH: N/A
 - PRODUCT SPECIFICATION: PS-43045
 - PACKAGING SPECIFICATION: PK-43020-001
 - THIS HOUSING MATES WITH MICRO-FIT RECEPTACLE #43025-****
 - THIS HOUSING TO BE USED WITH MOLEX MALE TERMINAL #43031-****
 - DESIGNED FOR .055(1.4) MINIMUM TO A .100(2.54) MAXIMUM THICK PANEL OR PRINTED CIRCUIT BOARD.
 - SEE SECTION "D"-D' FOR TERMINAL ORIENTATION IN HOUSING.
 - PANEL MOUNT FEATURES MUST LOCK ON SIDE OPPOSITE PUNCH SIDE FOR OPTIMUM RETENTION.
 - PART CONFORMS TO CLASS "B" REQUIREMENTS OF COSMETIC SPECIFICATION PS-45499-002. SOME HOUSINGS MAY HAVE A SMALL GATE BLEMISH NEAR THE GATE LOCATION THAT DOES NOT AFFECT FUNCTIONALITY.

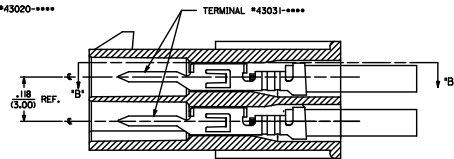
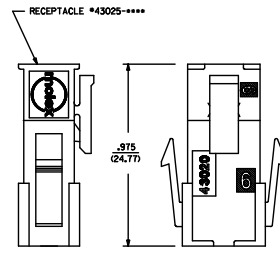


SECTION "E"-E' NO SCALE

RECOMMENDED PANEL CUT-OUT



PLUG WITH OPTIONAL PANEL MOUNTS ISO VIEW (8 CIRCUIT SHOWN)



MATED MICRO-FIT CONNECTOR

SECTION "D"-D' WITH TERMINAL SCALE: X0

| QUALITY SYMBOLS | GENERAL TOLERANCES (UNLESS SPECIFIED) | | DRAWN BY | | DATE | TITLE | |
|---|---------------------------------------|-------|--------------|------------|--------------|--|--------|
| | mm | INCH | AFG | DATE | 1993/01/07 | MICRO-FIT(3.0) 2 THRU 24 CIRCUIT PLUG WITH OPTIONAL PANEL MOUNTS | |
| ∇=0 | 4 PLACES ±.010 | ±.010 | CHECKED BY | DATE | | | |
| ∇=0 | 2 PLACES ±0.25 | ±.014 | BAP | 1993/01/07 | | | |
| ∇=0 | 1 PLACE ±0.35 | ± | APPROVED BY | DATE | | | |
| | 0 PLACE ± | ± | FSMTH | 2010/11/18 | | | |
| ANGULAR ±1/2° | | | MATERIAL NO. | | 2010/11/18 | | |
| DRAFT WHERE APPLICABLE MUST REMAIN WITHIN DIMENSIONS | | | SEE CHART | | DOCUMENT NO. | SDA-43020-**** | |
| THIS DRAWING CONTAINS INFORMATION THAT IS PROPRIETARY TO MOLEX INCORPORATED AND SHOULD NOT BE USED WITHOUT WRITTEN PERMISSION | | | | | | SHEET NO. | 1 OF 1 |