

## Excellent Integrated System Limited

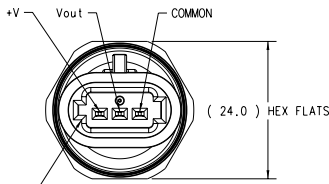
Stocking Distributor

Click to view price, real time Inventory, Delivery & Lifecycle Information:

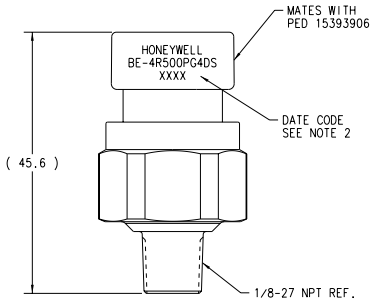
[Honeywell Sensing and Productivity Solutions](#)  
[BE-4R500PG4DS](#)

For any questions, you can email us directly:

[sales@integrated-circuit.com](mailto:sales@integrated-circuit.com)

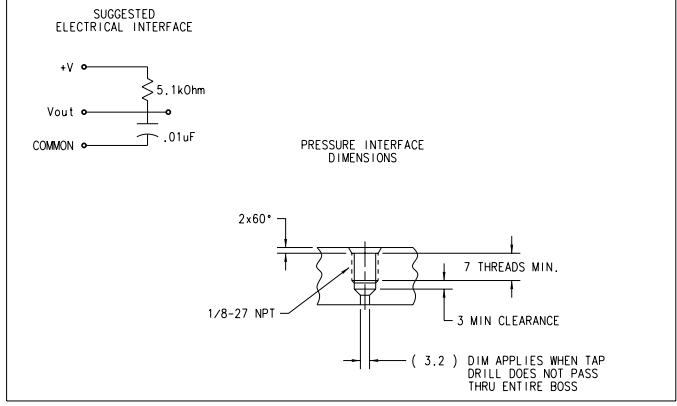
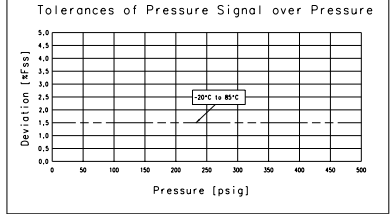
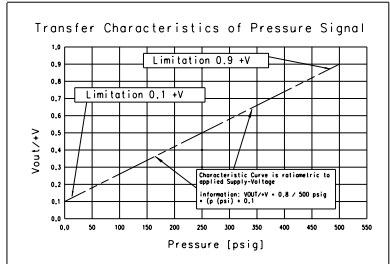


CONNECTOR MAY BE IN AN ALTERNATE ALIGNMENT WITH RESPECT TO THE HEX.



Part	Material
Contact pin	CDA 210 (brass)
Surface Treatment	Tin
Connector body - black	PBT 30% GF
Sensor housing	303 SS
Pressure Port	17-4 Stainless Steel

Specifications:	
Maximum Tightening Torque	20 Nm
Recommended Tightening Torque	15 Nm
Current Consumption	10 mA
Supply Voltage	4.75 to 5.25 VDC
Output Current	2 kOhm min Load
Burst Pressure	1500 psi
Proof Pressure	1000 psi
This Sensor is Reverse Polarity/Overvoltage Protected to	14V
Temperature Range	-20°C to 85°C



- NOTES:
1. INSTALLATION INSTRUCTION: WRAP 3.5 TO 4 TURNS OF 0.076mm (.003") THICK TEFLON THREAD SEALANT TAPE AND TORQUE SENSOR TO 15-20 Nm.
  2. DATE CODE CONTAINS 4 DIGITS (XXXX) THE FIRST DIGIT SIGNIFIES THE YEAR THE LAST THREE DIGITS SIGNIFY THE DATE OF THE YEAR
  3. VALIDATED TO TEST SPEC. 88842055

THIS DRAWING AND SPECIFICATIONS ARE THE PROPERTY OF HONEYWELL SENSING AND CONTROL AND SHALL NOT BE REPRODUCED, COPIED, OR USED AS THE BASIS FOR THE MANUFACTURE OF THIS OR SIMILAR OR SERVICES WITHOUT THE PERMISSION OF HONEYWELL SENSING AND CONTROL.		DRAWING TO BE INTERPRETED USING ANSI Y14.100-1994 UNLESS OTHERWISE SPECIFIED TO BE OTHERWISE NOTED.		<input type="checkbox"/> INCH <input checked="" type="checkbox"/> MM	DRAWN BY 04/04/02	
MAKE FROM		MATERIAL		TOLERANCE 1 PLACE 2 PLACE 3 PLACE 4 PLACE 5 PLACE 6 PLACE 7 PLACE 8 PLACE 9 PLACE 10 PLACE 11 PLACE 12 PLACE 13 PLACE 14 PLACE 15 PLACE 16 PLACE 17 PLACE 18 PLACE 19 PLACE 20 PLACE 21 PLACE 22 PLACE 23 PLACE 24 PLACE 25 PLACE 26 PLACE 27 PLACE 28 PLACE 29 PLACE 30 PLACE 31 PLACE 32 PLACE 33 PLACE 34 PLACE 35 PLACE 36 PLACE 37 PLACE 38 PLACE 39 PLACE 40 PLACE 41 PLACE 42 PLACE 43 PLACE 44 PLACE 45 PLACE 46 PLACE 47 PLACE 48 PLACE 49 PLACE 50 PLACE 51 PLACE 52 PLACE 53 PLACE 54 PLACE 55 PLACE 56 PLACE 57 PLACE 58 PLACE 59 PLACE 60 PLACE 61 PLACE 62 PLACE 63 PLACE 64 PLACE 65 PLACE 66 PLACE 67 PLACE 68 PLACE 69 PLACE 70 PLACE 71 PLACE 72 PLACE 73 PLACE 74 PLACE 75 PLACE 76 PLACE 77 PLACE 78 PLACE 79 PLACE 80 PLACE 81 PLACE 82 PLACE 83 PLACE 84 PLACE 85 PLACE 86 PLACE 87 PLACE 88 PLACE 89 PLACE 90 PLACE 91 PLACE 92 PLACE 93 PLACE 94 PLACE 95 PLACE 96 PLACE 97 PLACE 98 PLACE 99 PLACE 100 PLACE	CHECKED T. PRAM 04/04/02	
Q2 ADDED CHARTS AND OTHER DATA		FINISH		ENG. APP. TP 05/21/02	SCALE 2:1	CHANGE 02
Q1 1/8-27 NPT WAS 1/4-18 NPT		DATE		PART NO. 17650082		
CHG'D BY		DATE				
APP'D BY		ENG				