

Excellent Integrated System Limited

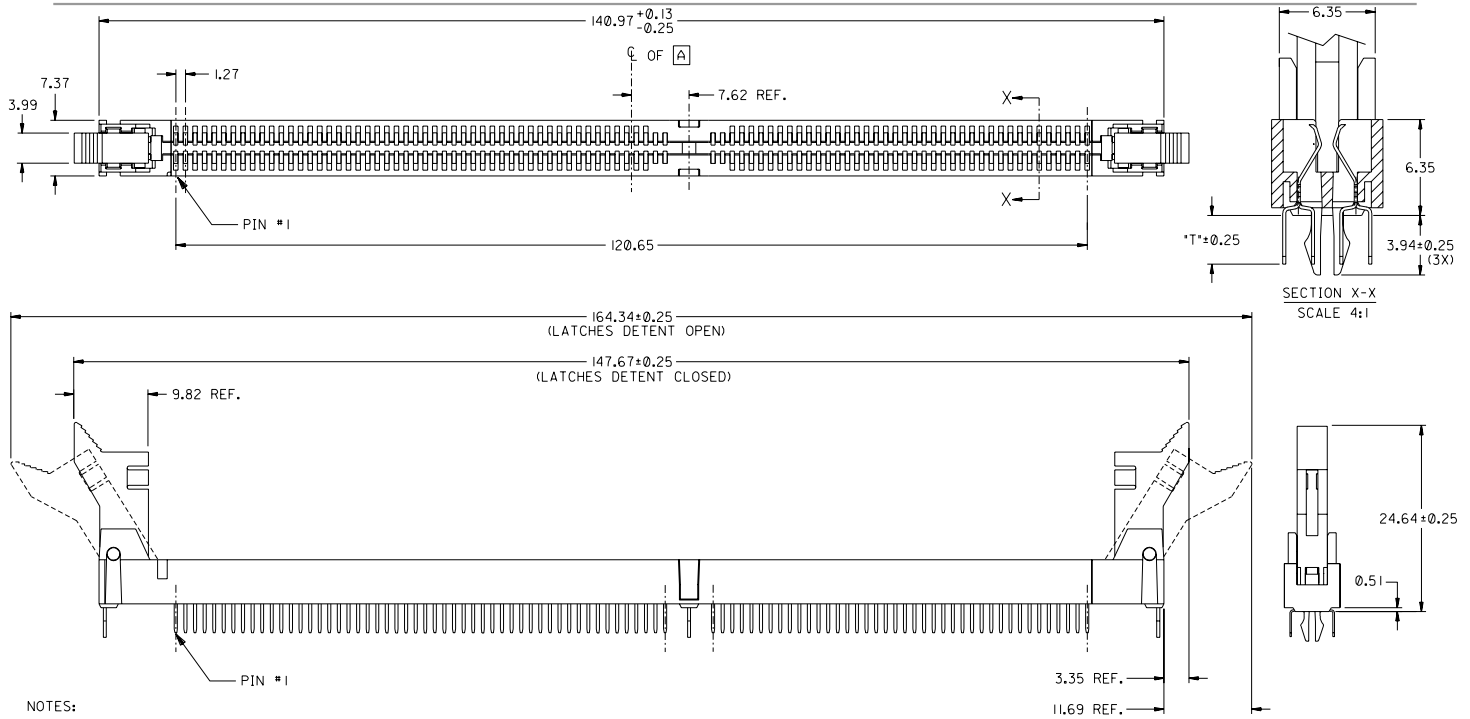
Stocking Distributor

Click to view price, real time Inventory, Delivery & Lifecycle Information:

[Molex Connector Corporation](#)
[87636-0002](#)

For any questions, you can email us directly:

sales@integrated-circuit.com



NOTES:

- CARD SLOT ACCEPTS 1.27 ± 0.10 MM MODULE THICKNESS. (MEASURED OVER P.C. PADS).
- REFER TO PRODUCT SPEC. PS-87736-003 FOR PERFORMANCE SPECIFICATIONS.
- RECOMMENDED MODULE LAYOUT SHALL BE PER MO-206.
- RECOMMENDED PLATING ON MODULE PADS: $0.76 \mu\text{M}$ MIN HARD GOLD (Au) OVER $2.0 \mu\text{M}$ MIN NICKEL (Ni).
- PRODUCT WILL HAVE DATE CODE STAMPED ON SIDE OF HOUSING.

MATERIALS:

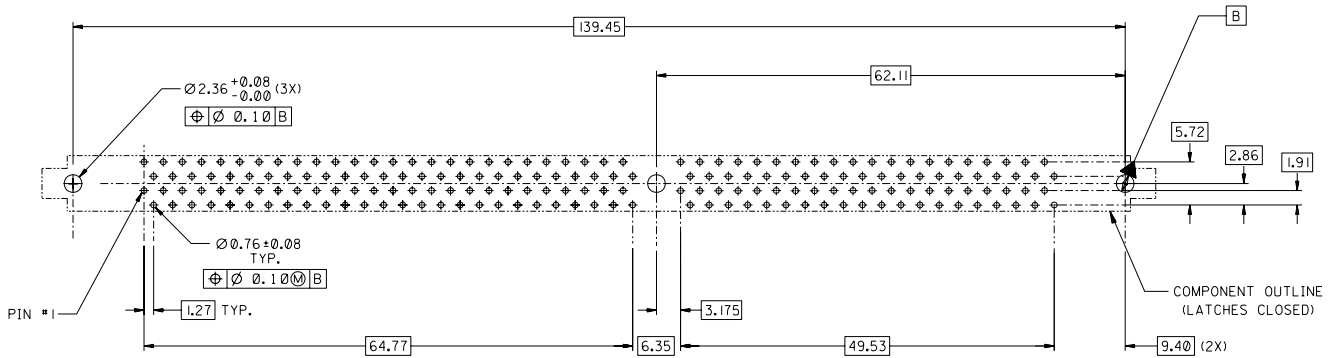
- HOUSING - HIGH TEMP THERMOPLASTIC
- TERMINAL - PHOSPHOR BRONZE
- LATCHES - HIGH TEMP THERMOPLASTIC

PLATING:

- CONTACT AREA: SEE TABLE IN SHEET 2.
- SOLDER TAILS: TIN-LEAD (Sn-Pb); THICKNESS= $1.91 \mu\text{M}$ ($0.075 \mu\text{IN}$) MIN.
- UNDERPLATE: $1.27 \mu\text{M}$ ($0.05 \mu\text{IN}$) MIN NICKEL (Ni).

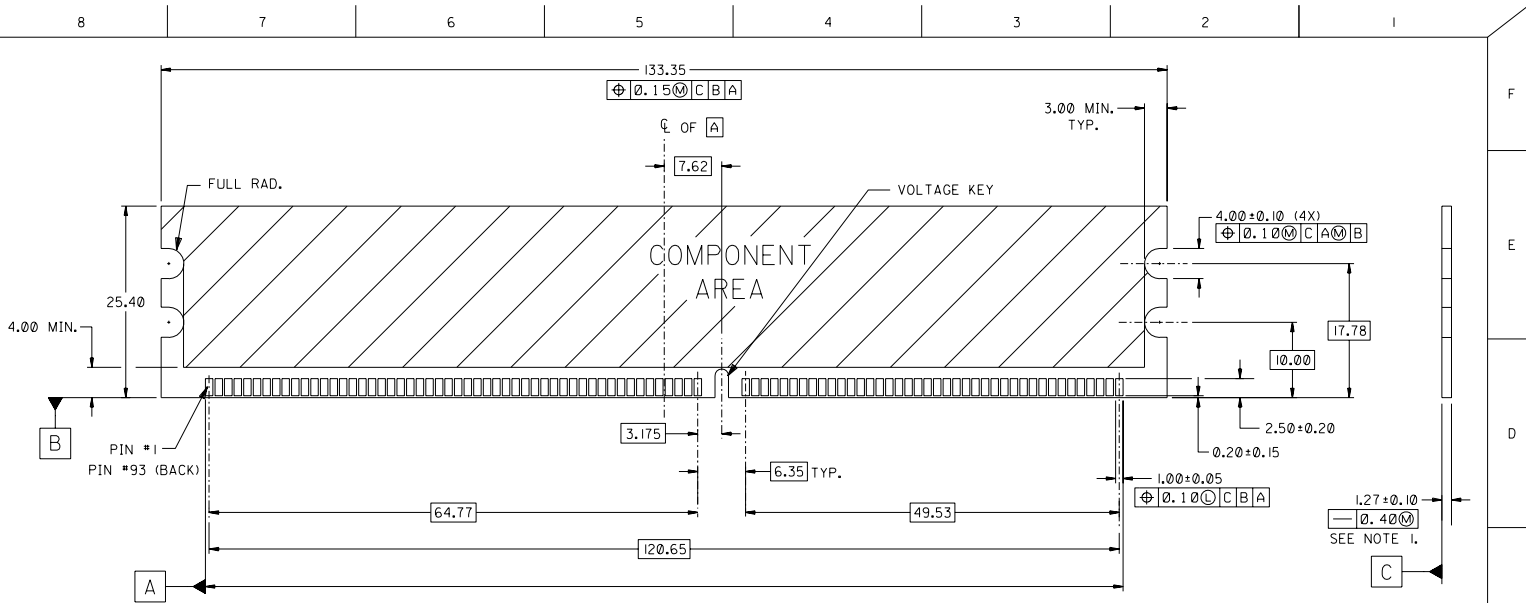
EC NO. S2003-0322 DRWN: COL LHM 03/01/13 CHK: PT LHM 03/01/13 APPR: KC LING 03/01/13	QUALITY SYMBOLS MAJOR $\blacktriangledown = 0$ CRITICAL $\nabla = 0$	GENERAL TOLERANCES: (UNLESS SPECIFIED)		SCALE NTS	DESIGN UNITS	THIRD ANGLE PROJECTION	DIMENSIONS:			SHT	REV
		mm	INCH	<input checked="" type="checkbox"/> mm <input type="checkbox"/> INCH	<input type="checkbox"/> mm <input type="checkbox"/> INCH		<input type="checkbox"/> mm ONLY	REVISE ON CAD ONLY			
B2	REV	DRAWN BY & DATE MEI LIN 10/05/00		TITLE: 1.27 MM PITCH DDR DIMM							
		CHECKED BY & DATE STEVEN Q 11/05/00		184 CKT SINGLE KEY SALES DRAWING							
		APPROVED BY & DATE SK TOH 12/05/00		MATERIAL NO. SEE TABLE			DRAWING NO. SD-87636-001			SHEET NO. 1 OF 3	
		ANGULAR: $\pm - 0$		CAD FILENAME SD-87636-001.S01			DRAWING NO. SD-87636-001			SIZE A3	
THIS DRAWING CONTAINS INFORMATION THAT IS PROPRIETARY TO MOLEX INCORPORATED AND SHOULD NOT BE USED WITHOUT WRITTEN PERMISSION.											

PART NUMBER	DATUM VOLTAGE KEY	PACKAGING TYPE	DIM *T*	RECOMMENDED PCB THICKNESS	LATCH COLOR	CONTACT AREA PLATING
87636-0001	CENTER (1,8V)	TRAY	3,23	2,36	BEIGE	0,38µM/15µIN MIN. GOLD
87636-0002	LEFT (2,5V)					
87636-0011	CENTER (1,8V)		2,67	1,57		
87636-0012	LEFT (2,5V)					
87636-1001	CENTER (1,8V)		3,23	2,36	BLACK	0,76µM/30µIN MIN. GOLD
87636-1002	LEFT (2,5V)					
87636-1011	CENTER (1,8V)		2,67	1,57		
87636-1012	LEFT (2,5V)					
87636-1022	LEFT (2,5V)	3,23	2,36		0,38µM/15µIN MIN. GOLD	



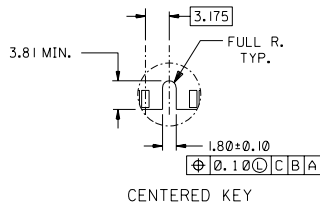
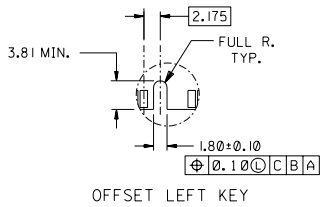
RECOMMENDED P.C. BOARD HOLE PATTERN
(CONNECTOR SIDE)

EC NO. S2003-0322 DRWN. COLYNN 03/01/13 CHG. PT LIM 03/01/15 APPR. KC LING 03/01/15	QUALITY SYMBOLS MAJOR ▼ = 0 CRITICAL ▽ = 0	GENERAL TOLERANCES: (UNLESS SPECIFIED)		SCALE NTS	DESIGN UNITS	THIRD ANGLE PROJECTION	DIMENSIONS:	SHT	REV
		mm	INCH	mm	INCH	mm	INCH	mm	INCH
		4 PLACES ±0. - ±.	3 PLACES ±0. - ±.	2 PLACES ±0.15 ±.	1 PLACE ±0. - ±.	DRAWN BY & DATE MEI LIN 10/05/00 CHECKED BY & DATE STEVEN Q 11/05/00 APPROVED BY & DATE SK TOH 12/05/00 CAD FILENAME SD-87636-001.S02	TITLE: 1,27 MM PITCH DDR DIMM 184 CKT SINGLE KEY SALES DRAWING	MATERIAL NO. SEE TABLE	DRAWING NO. SD-87636-001



(OUTSIDE EDGE OF END PADS)

RECOMMENDED MODULE LAYOUT
184 CKT 1.8V SHOWN



NOTES:

1. STRAIGHTNESS OF MODULE APPLIES TO THE AREA FROM THE BOTTOM OF THE CARD UP 4.00 MM.
2. IF TIE BARS ARE ATTACHED TO PADS, THE TIE BAR SHOULD BE ON AN INTERNAL LAYER, SO THAT THE REMNANT CANNOT CAUSE DAMAGE TO THE CONTACTS.

EC NO.	DRAWN	COL YNN	03/01/13	CHKD	PT LIM	03/01/15	APPR	KC LING	03/01/15	DESCRIPTION	QUALITY SYMBOLS	GENERAL TOLERANCES: (UNLESS SPECIFIED)		SCALE	DESIGN UNITS	THIRD ANGLE PROJECTION	DIMENSIONS:		SHT	REV		
												mm	INCH				mm	INCH				
B2											MAJOR ▼ = 0 CRITICAL ▽ = 0	4 PLACES ±0. - ±.	3 PLACES ±0. - ±.	2 PLACES ±0.15 ±.	1 PLACE ±0. - ±.	mm	INCH	mm	INCH			
												DRAWN BY & DATE MEI LIN 10/05/00	TITLE: 1.27 MM PITCH DDR DIMM									
												CHECKED BY & DATE STEVEN O 11/05/00	184 CKT SINGLE KEY SALES DRAWING									
												APPROVED BY & DATE SK TOH 12/05/00	MATERIAL NO. SEE TABLE		DRAWING NO. SD-87636-001		SHEET NO. 3 OF 3					
												CAD FILENAME SD-87636-001.S03	MOLEX INCORPORATED		SD-87636-001		SIZE A3					
												THIS DRAWING CONTAINS INFORMATION THAT IS PROPRIETARY TO MOLEX INCORPORATED AND SHOULD NOT BE USED WITHOUT WRITTEN PERMISSION.										