

## Excellent Integrated System Limited

Stocking Distributor

Click to view price, real time Inventory, Delivery & Lifecycle Information:

[AVX Corporation](#)  
[818071000101003](#)

For any questions, you can email us directly:

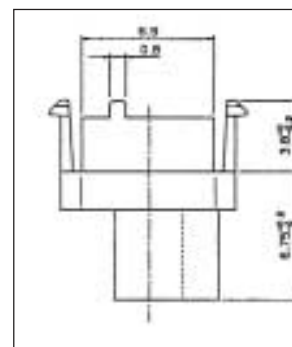
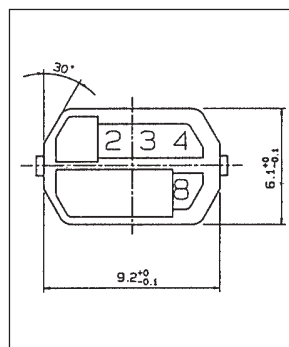
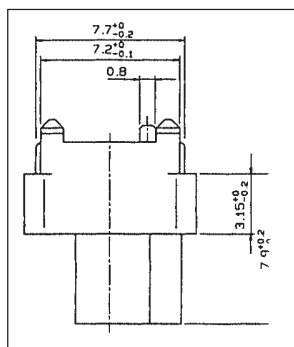
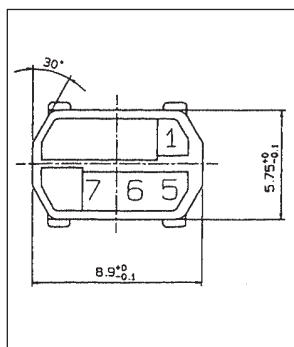
[sales@integrated-circuit.com](mailto:sales@integrated-circuit.com)



# Coding Keys: Type A Male (Backplane) Type A Female (Daughter Card) Series 8071

CompactPCI® supports two types of voltages (3.3V and 5.0V). Coding keys are used to prevent damage by inserting the wrong boards into a system. Keys are snapped into the center

polarization cavity. 3.3V cards are coded cadmium yellow and 5.0V are brilliant blue.



## MALE

101 003	102 006	103 008	104 002
Cadmium Yellow	Brilliant Blue	Pastel Orange	Strawberry Red

## FEMALE

101 003	102 006	103 008	104 002
Cadmium Yellow	Brilliant Blue	Pastel Orange	Strawberry Red

Color	Ral Number	Code No.	Key Part Number	Plug/Receptacle
Cadmium Yellow	1021	3456	81 8071 000 101003	Plug 3.3V C-PCI
Brilliant Blue	5007	1567	81 8071 000 102006	Plug 5.0V C-PCI
Pastel Orange	2003	3568	81 8071 000 103008	Plug
Strawberry Red	3018	1248	81 8071 000 104002	Plug
Cadmium Yellow	1021	1278	82 8071 000 101003	Receptacle 3.3V C-PCI
Brilliant Blue	5007	2348	82 8071 000 102006	Receptacle 5.0V C-PCI
Pastel Orange	2003	1247	82 8071 000 103008	Receptacle
Strawberry Red	3018	3567	82 8071 000 104002	Receptacle

