

## Excellent Integrated System Limited

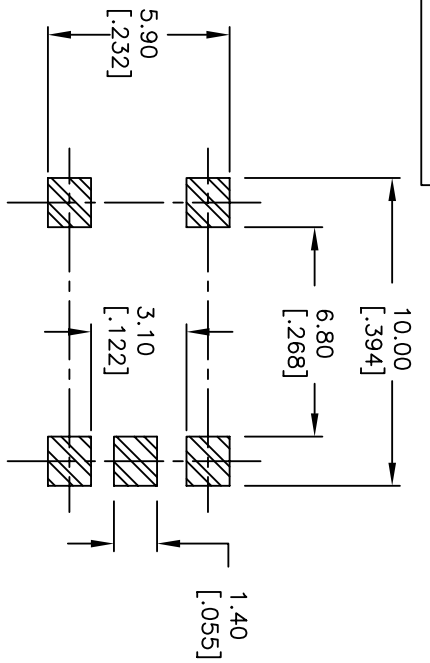
Stocking Distributor

Click to view price, real time Inventory, Delivery & Lifecycle Information:

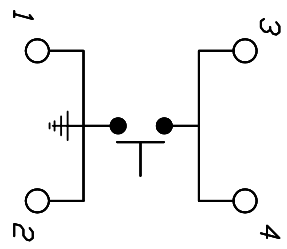
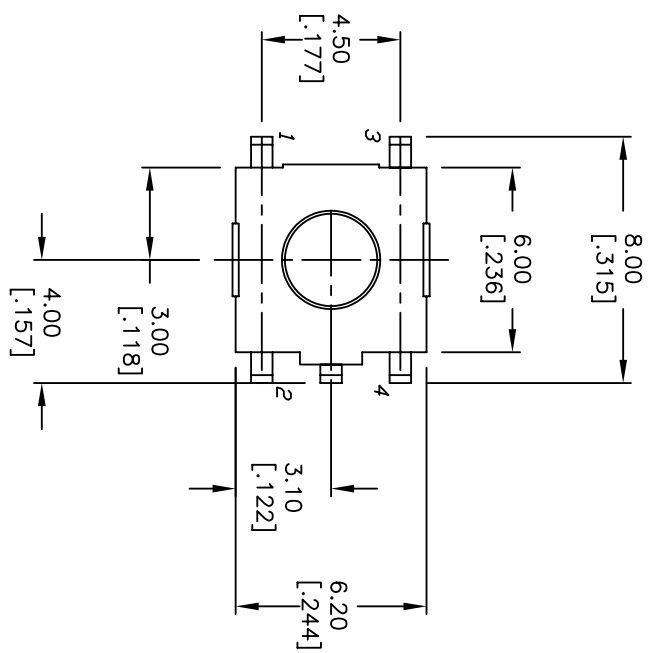
[E-Switch](#)  
[TLE3303F160QG](#)

For any questions, you can email us directly:

[sales@integrated-circuit.com](mailto:sales@integrated-circuit.com)



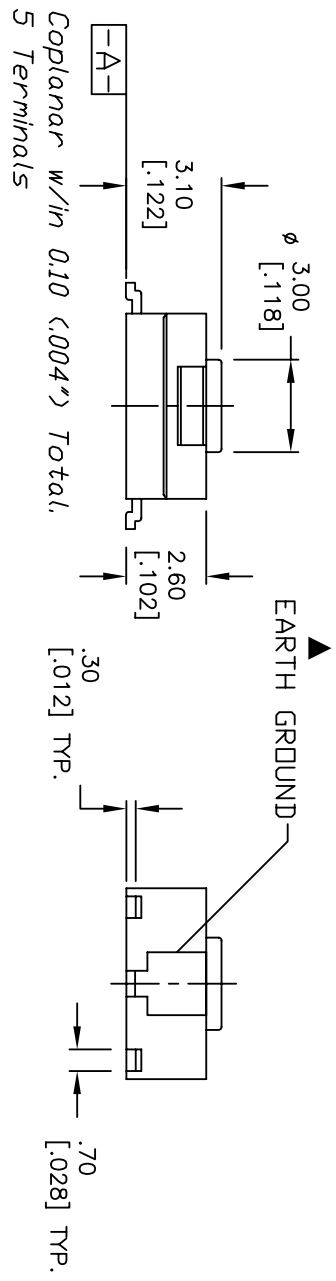
RECOMMENDED P.C.B. LAND



CIRCUIT: SPST

NOTES:

1. ALL DIMENSIONS IN MM [INCH]
2. ~UNLESS OTHERWISE SPECIFIED
3. GENERAL TOLERANCE: X.X=±0.4  
X.XX=±0.25
4. TERMINAL NOS FOR REF. ONLY
5. TRAVEL: 0.25 ±.1mm
6. RATING: 50mA, 12VDC (GOLD CONTACTS)
7. OPERATING FORCE: 160±50gf
8. CONTACT RESISTANCE: 100M OHM MAX.
9. PACKAGED: TAPE & REEL, 1500
10. DESIGNATE MAJOR DIMENSIONS
11. 2002/95/EC (ROHS) COMPLIANT



REV.	ECN No.	DESCRIPTION	DATE	CHKD	TN
C	16646	UPDATED NOTES	11/13/06		TN
B	11904	REVISED AND REDRAWN	7/9/02		CJB

SCALE	DATE	DR	DWG	REV
4:1	11/13/2006	TN	P010525	C

**E-SWITCH**

TLE3303F160QG

THE INFORMATION CONTAINED IN THIS DOCUMENT IS PROPRIETARY TO E-SWITCH AND IS NOT TO BE COPIED OR TRANSFERRED