

## Excellent Integrated System Limited

Stocking Distributor

Click to view price, real time Inventory, Delivery & Lifecycle Information:

[Dialight](#)  
[5690119900](#)

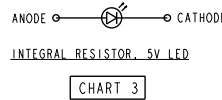
For any questions, you can email us directly:  
[sales@integrated-circuit.com](mailto:sales@integrated-circuit.com)

PART NUMBER	LED COLOR		LED SPEC. CHART
	POSITION 1	POSITION 2	
569-0111-100	RED	RED	1
569-0111-200	RED	GREEN	1
569-0111-700	RED	ORANGE	1
4569-0111-900	RED	BLUE WHITE DIFF. EPOXY	1
569-0112-000	GREEN	BLANK	1
569-0112-100	GREEN	RED	1
569-0112-200	GREEN	GREEN	1
569-0112-300	GREEN	YELLOW	1
569-0112-700	GREEN	ORANGE	1
569-0113-100	YELLOW	RED	1
569-0113-200	YELLOW	GREEN	1
569-0113-300	YELLOW	YELLOW	1
569-0117-000	ORANGE	BLANK	1
569-0117-700	ORANGE	ORANGE	1
4569-0119-900	BLUE WHITE DIFF. EPOXY	BLUE WHITE DIFF. EPOXY	1
569-0211-100	RED	RED	2
569-0211-300	RED	YELLOW	2
569-0212-200	GREEN	GREEN	2
569-0212-300	GREEN	YELLOW	2
569-0213-300	YELLOW	YELLOW	2
569-0311-100	RED	RED	3
569-0312-200	GREEN	GREEN	3
569-0312-300	GREEN	YELLOW	3
569-0313-300	YELLOW	YELLOW	3
569-0711-100	RED/GREEN	RED/GREEN	4
569-0711-400	RED/GREEN	YELLOW/GREEN	4
569-0714-100	YELLOW/GREEN	RED/GREEN	4
569-0714-400	YELLOW/GREEN	YELLOW/GREEN	4

CHARACTERISTICS	OPERATING CHARACTERISTICS AT 25°C AMBIENT					TEST CONDITIONS
	LED COLOR	MIN	TYP	MAX	UNITS	
FORWARD VOLTAGE	RED		2.0	2.8	V	I <sub>f</sub> = 20 mA
	YELLOW		2.1	2.8		
	GREEN		2.1	2.8		
	BLUE		3.5	4.1		
	ORANGE	1.5	2.2	3.0		
REVERSE VOLTAGE	ALL	5			V	I <sub>r</sub> = 100 µA
	RED		635			nm
PEAK WAVELENGTH	YELLOW		585		MEASURED AT PEAK	
	GREEN		565			
	BLUE		428			
	ORANGE		600			
	RED	7.4	10.0			
LUMINOUS INTENSITY	YELLOW	7.4	10.0		mcd	I <sub>f</sub> = 10 mA
	GREEN	4.7	12.6			
	BLUE	7.1	12.5	18.0		
	ORANGE	3.4	7.0			
	RED					

CHARACTERISTICS	OPERATING CHARACTERISTICS AT 25°C AMBIENT					TEST CONDITIONS
	LED COLOR	MIN	TYP	MAX	UNITS	
FORWARD VOLTAGE	RED		1.7	2.2	V	I <sub>f</sub> = 2 mA
	YELLOW		1.8	2.7		
	GREEN		1.9	2.2		
REVERSE CURRENT	ALL			10	µA	V <sub>r</sub> = 5 V
	RED		635			nm
PEAK WAVELENGTH	YELLOW		585		MEASURED AT PEAK	
	GREEN		565			
	RED	1.0	1.6			
LUMINOUS INTENSITY	YELLOW	1.0	1.6		mcd	I <sub>f</sub> = 2 mA
	GREEN	1.0	1.6			
	RED					

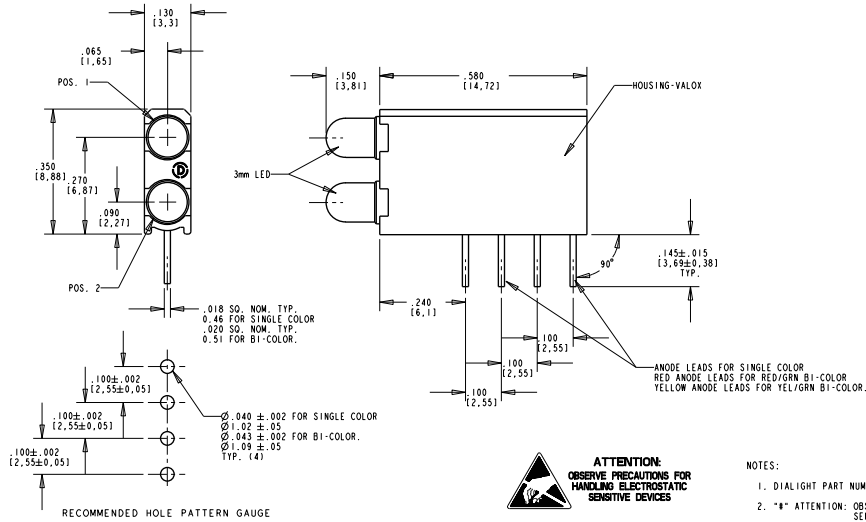
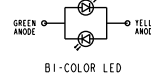
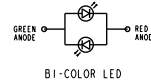
REV	ECN NO	REVISIONS	DRN	CKD	APP	DATE
A		NEW RELEASE	DC			N.O. 9-18-97
B		ADDED P/N 569-0211-300 & 569-0119-900. UPDATED LED SPECS.	JAV	YIS		10-24-03
C		ADDED P/N 569-0111-900, -0112-700, -0112-000, -0112-100, -0111-700, -0113-100, -0113-200, -0110-000, -0112-200 AND ESD LOGO. UPDATED FORMAT AND ESD NOTE	TBC			



CHARACTERISTICS	OPERATING CHARACTERISTICS AT 25°C AMBIENT					TEST CONDITIONS
	LED COLOR	MIN	TYP	MAX	UNITS	
FORWARD CURRENT	RED		10	20	mA	V <sub>r</sub> = 5 V
	YELLOW		10	20		
	GREEN		10	20		
REVERSE VOLTAGE	ALL	5			V	I <sub>r</sub> = 100 µA
	RED		635			nm
PEAK WAVELENGTH	YELLOW		585		MEASURED AT PEAK	
	GREEN		565			
	RED	8.7	29			
LUMINOUS INTENSITY	YELLOW	3.7	12.6		mcd	V <sub>r</sub> = 5 V
	GREEN	5.6	19			
	RED					

CHARACTERISTICS	RED/GRN BI-COLOR LEDS OPERATING CHARACTERISTICS AT 25°C AMBIENT					TEST CONDITIONS
	COLOR	MIN	TYP	MAX	UNITS	
FORWARD VOLTAGE	RED		2.0	2.8	V	I <sub>f</sub> = 20 mA
	GREEN		2.1	2.8		
	RED		635			
PEAK WAVELENGTH	RED		635		nm	I <sub>f</sub> = 10 mA
	GREEN		565			
LUMINOUS INTENSITY	RED	2.5	4.7		mcd	I <sub>f</sub> = 10 mA
	GREEN	3.7	10.0			
	RED					

CHARACTERISTICS	YEL/GRN BI-COLOR LEDS OPERATING CHARACTERISTICS AT 25°C AMBIENT					TEST CONDITIONS
	COLOR	MIN	TYP	MAX	UNITS	
FORWARD VOLTAGE	YELLOW		2.1	2.8	V	I <sub>f</sub> = 20 mA
	GREEN		2.1	2.8		
	YELLOW		585			
PEAK WAVELENGTH	YELLOW		585		nm	I <sub>f</sub> = 10 mA
	GREEN		565			
LUMINOUS INTENSITY	YELLOW	2.5	4.7		mcd	I <sub>f</sub> = 10 mA
	GREEN	2.5	6.3			
	YELLOW					



THIS DRAWING AND THE CONTENTS HEREIN ARE CONFIDENTIAL AND THE SOLE PROPERTY OF DIALIGHT. REPRODUCTION OF THIS DRAWING OR CONSTRUCTION OF ANY PARTS WITHIN THIS DRAWING ARE FORBIDDEN WITHOUT THE WRITTEN CONSENT OF DIALIGHT.			
SCALE: DRAWING SCALE	DRAWING NUMBER	REV	
ALL DIM'S IN: INCHES (MM)	C-16285	C	
TOLERANCES: UNLESS OTHERWISE SPECIFIED	TITLE	BI-LEVEL CBI	
FRACTIONS: 1/16, 1/8, 1/4	MATERIAL		
DECIMALS: 1, 2, 3, 4, 5			
ANGLES: 15, 30, 45, 60, 75, 90			
FINISH:	Dialight		
FSCM	83330	1501 ROUTE 34 SOUTH FARMINGDALE, NJ 07127	
SHEET 1 OF 1 FAMILY TABLE:			