

Excellent Integrated System Limited

Stocking Distributor

Click to view price, real time Inventory, Delivery & Lifecycle Information:

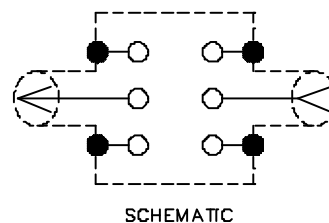
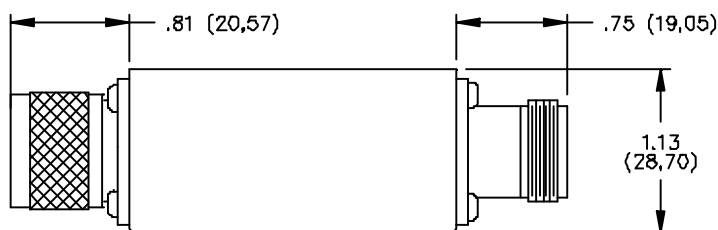
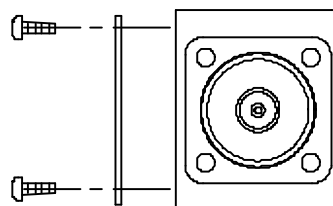
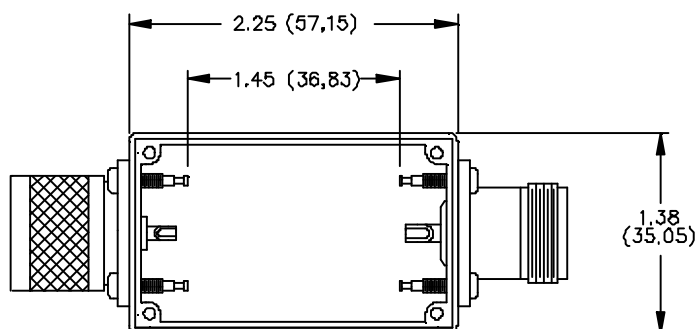
[Pomona Electronics](#)
[2411](#)

For any questions, you can email us directly:

sales@integrated-circuit.com

Pomona®

Model 2411 Size B Aluminum Box With Cover Type N Male To Female



MATERIALS:

Connector: Type "N" Male & Type "N" Female

Body: Tarnish Resistant Plating, Center Contact: Male – Gold Plated Brass, Female – Gold Plated Beryllium Copper

Solder Turret Terminal Screws: Steel

Shielded Housing: Die cast aluminum alloy 380 or 384.

Finish: Blue baked enamel per Fed. Std. 595 25109 over primer wash

Cover: 1.02 (.040) thick aluminum #1100-H14

Finish: Clear anodized

Screws: 4 each #2-32 x (1/4"). Pan head self-tapping. Steel.

Finish: Blue zinc plated.

Marking "Pomona 2411"

RATINGS:

Operating Voltage: Inner conductor/Shield: 1000 VRMS Max.

Operating Temperature: -55°C to +150°C

Nominal Impedance: 50 Ohms

ORDERING INFORMATION: Model 2411

All dimensions are in inches. Tolerances (except noted): .xx = ±.02" (.51 mm), .xxx = ±.005" (.127 mm).

All specifications are to the latest revisions. Specifications are subject to change without notice.

Registered trademarks are the property of their respective companies. Made in USA