

## Excellent Integrated System Limited

Stocking Distributor

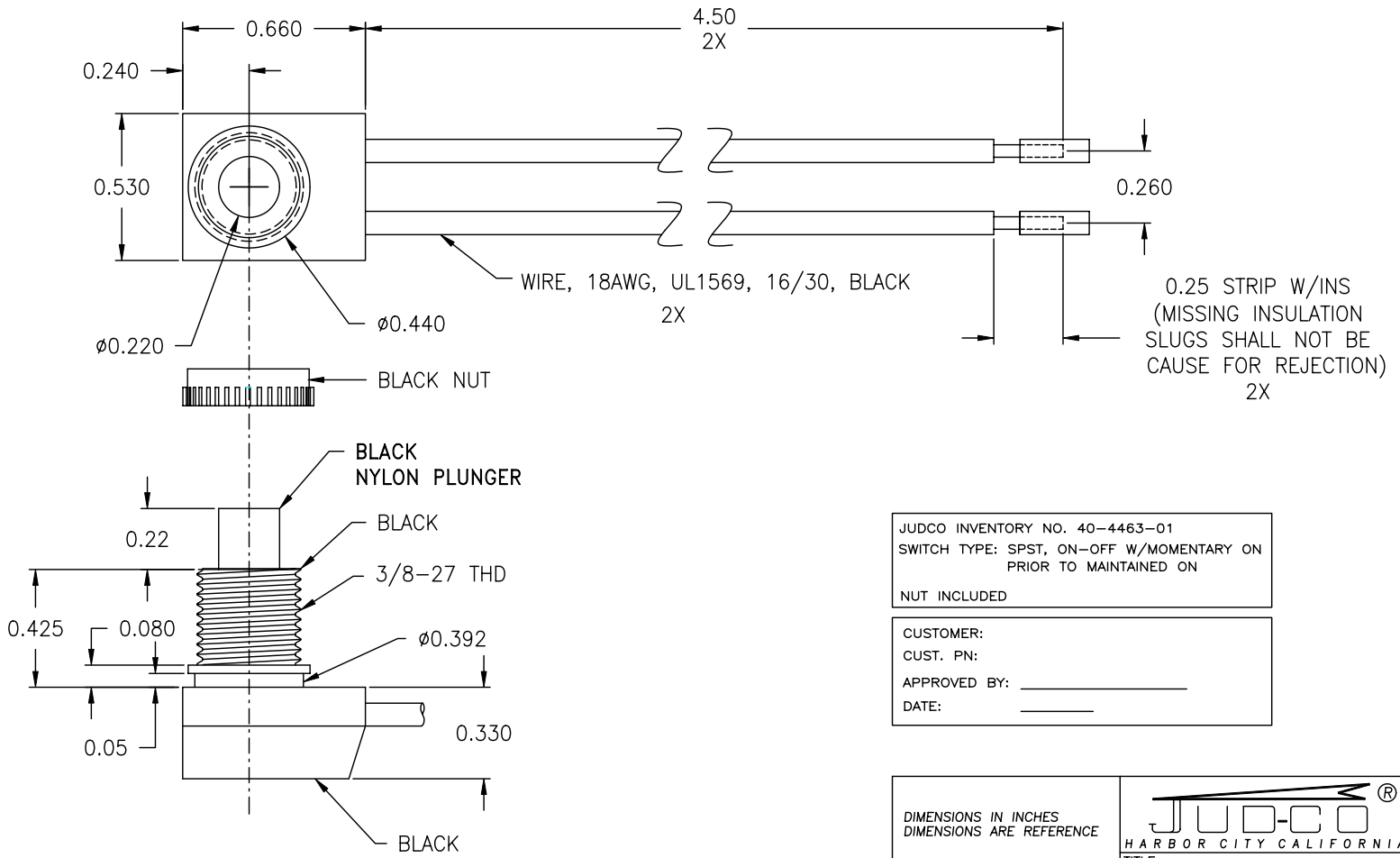
Click to view price, real time Inventory, Delivery & Lifecycle Information:

[Judco Manufacturing, Inc.](#)  
[40-4463-01](#)

For any questions, you can email us directly:


[sales@integrated-circuit.com](mailto:sales@integrated-circuit.com)

LTR	EN	DESCRIPTION	APPR	BY	DATE
A	-	INITIAL RELEASE	RB	EM	4-27-06
B	6269	CHANGED PLUNGER FROM ACETAL TO NYLON	MT	NH	4-06-11



JUDCO INVENTORY NO. 40-4463-01  
 SWITCH TYPE: SPST, ON-OFF W/MOMENTARY ON  
 PRIOR TO MAINTAINED ON  
 NUT INCLUDED

CUSTOMER:  
 CUST. PN:  
 APPROVED BY: \_\_\_\_\_  
 DATE: \_\_\_\_\_

DIMENSIONS IN INCHES DIMENSIONS ARE REFERENCE		 HARBOR CITY CALIFORNIA TITLE <b>J-188A-1 MOMENTARY ON</b>	
APPR: KJ	04-27-06	DWG. NO.	<b>1415-955</b>
DRAWN: NH	04-06-11	SHEET	1 OF 1
ENG: IS	04-06-11		
1415U955B.DWG			

This document embodies a product, component, and/or design proprietary to JUDCO MANUFACTURING INC., and which is protected either as a trade secret, by U.S. Patent, or by copyright. It may not be used in any way without written express consent of JUDCO MANUFACTURING INC.