

Excellent Integrated System Limited

Stocking Distributor

Click to view price, real time Inventory, Delivery & Lifecycle Information:

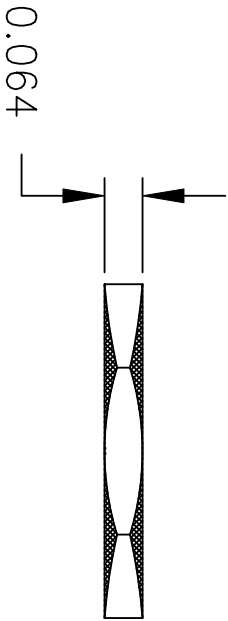
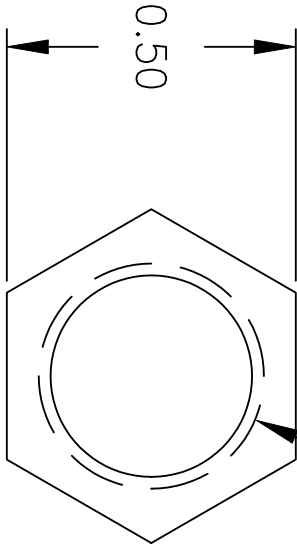
[Judco Manufacturing, Inc.](#)
[18-1006-00](#)

For any questions, you can email us directly:

sales@integrated-circuit.com

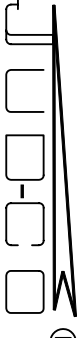
LTR	EN	DESCRIPTION	APPR	BY	DATE
A	-	INITIAL RELEASE	RB	NH	1-7-04

THD 3/8-27



JUDCO INVENTORY NO. 18-1006-00
 DESCRIPTION: NUT, HEX, 3/8-27, BRASS, UNPLATED

CUSTOMER: DIGI-KEY
 CUSTOMER: PN 534PB-ND
 ACCEPTED BY: _____
 DATE: _____

DIMENSIONS IN INCHES DIMENSIONS ARE REFERENCE		
DRAWN: NH	1-7-04	
APPR: KU	1-7-04	HARBOR CITY CALIFORNIA NUT, HEX 3/8-27 BRASS, UNPLATED
1415US43A.DWG		DWG. NO. 1415-543
SHEET		1 OF 1

This document embodies a product, component, and/or design proprietary to JUDCO MANUFACTURING INC., and which is protected either as a trade secret, by U.S. Patent, or by copyright. It may not be used in any way without written express consent of JUDCO MANUFACTURING INC.