

## **Excellent Integrated System Limited**

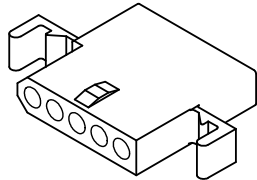
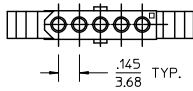
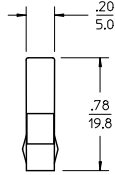
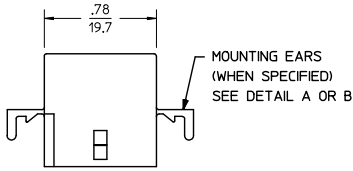
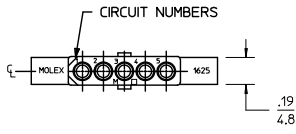
Stocking Distributor

Click to view price, real time Inventory, Delivery & Lifecycle Information:

[Molex Connector Corporation](#)  
[03-06-2054](#)

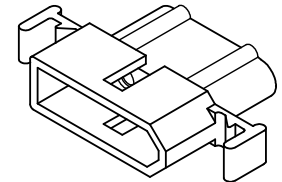
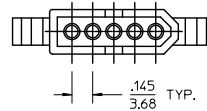
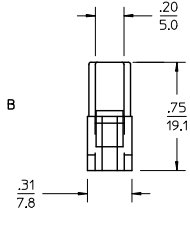
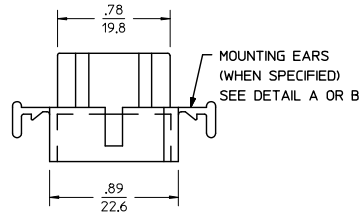
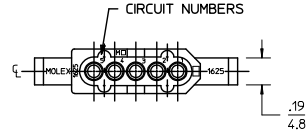
For any questions, you can email us directly:  
[sales@integrated-circuit.com](mailto:sales@integrated-circuit.com)

RECEPTACLE



RECEPTACLE HOUSING  
SHOWN WITH STANDARD EARS

PLUG

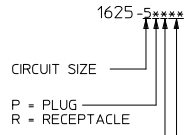


PLUG HOUSING  
SHOWN WITH STANDARD EARS

<b>PK SPEC</b> EC NO: UCP2015-0466 DRAWN: JDOX 2014/08/06 CHECKED: KIPPER 2014/08/06 APPROVED: SMITH 2014/08/14 F1 REV	QUALITY SYMBOLS ∇=0 ∇=0 ∇=0	GENERAL TOLERANCES (UNLESS SPECIFIED)		DIMENSION STYLE IN/MM		SCALE 2:1	DESIGN UNITS INCH	THIRD ANGLE PROJECTION
		4 PLACES ± --- ± ---	3 PLACES ± --- ± .010	DRAWN BY JDOX DATE 2014/08/06	TITLE .062/(1.57) HOUSINGS PLUG & RECEPTACLE 5 CIRCUIT .145/(3.68)			
		2 PLACES ± 0.25 ± .01	1 PLACE ± 0.35 ± ---	CHECKED BY KIPPER DATE 2014/08/06	APPROVED BY SMITH DATE 2014/08/14			
		0 PLACE ± --- ± ---	ANGULAR ±1/2°		MATERIAL NO. SEE CHART	DOCUMENT NO. SD-1625-5*	SHEET NO. 1 OF 2	
DRAFT WHERE APPLICABLE MUST REMAIN WITHIN DIMENSIONS		THIS DRAWING CONTAINS INFORMATION THAT IS PROPRIETARY TO MOLEX INCORPORATED AND SHOULD NOT BE USED WITHOUT WRITTEN PERMISSION						

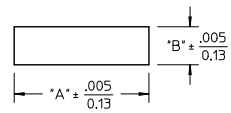
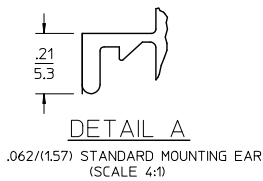
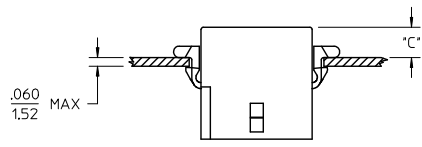
PLUG		RECEPTACLE	
PART NO.	ENG. NO.	PART NO.	ENG. NO.
03-06-2054	1625-5P	03-06-1055	1625-5R
03-06-2055	1625-5P1	03-06-1056	1625-5R1
03-06-7054	1625-5PBK	03-06-6055	1625-5RBK
03-06-7055	1625-5P1BK	NOT TOOLED	1625-5R2

LEGEND:



BLANK = WITH STANDARD EARS  
 1 = WITHOUT EARS  
 2 = WITH PREBENT EARS

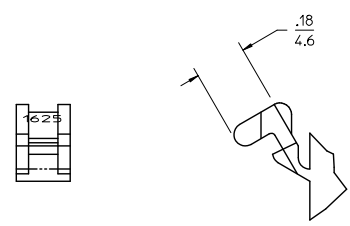
COLOR:  
 BLANK = NATURAL COLOR  
 AM = AMBER BK = BLACK BU = BLUE  
 BN = BROWN GY = GRAY GN = GREEN  
 OR = ORANGE RD = RED YW = YELLOW



RECOMMENDED PANEL OPENING

HOUSING	DIM. "A"	DIM. "B"	"C" PREBENT EAR	"C" STANDARD EAR
PLUG	1.044/(26.52)	.318/(8.08)	.19/(4.8)	.18/(4.6)
RECEPT.	.940/(23.88)	.265/(6.73)	.21/(5.3)	.20/(5.1)

- NOTES:
1. MATERIAL: NYLON 6/6, UL94V-2. COLOR: SEE LEGEND.
  2. FINISH: NONE.
  3. MOLEX PRODUCT SPEC PS-02-06 APPLIES.
  4. PACKAGING SPECIFICATION: PK-1625-003.
  5. ACCEPTS MOLEX .062 SERIES TERMINALS.
  6. PARTS CONFORM TO CLASS B REQUIREMENTS OF COSMETIC SPECIFICATION PS-45499-002.



SEE SHEET 1 EC NO: UCP2015-0466 DRAWN BY: JDFOX 2014/08/06 CHECKED BY: MKIPPER 2014/08/06 APPROVED BY: F SMITH 2014/08/14	QUALITY SYMBOLS ∇=0 ∇=0 ∇=0	GENERAL TOLERANCES (UNLESS SPECIFIED)		DIMENSION STYLE IN/MM		SCALE 2:1	DESIGN UNITS INCH	THIRD ANGLE PROJECTION		
		4 PLACES ± --- ± ---	3 PLACES ± --- ± .010	2 PLACES ± 0.25 ± .01	1 PLACE ± 0.35 ± ---	0 PLACE ± --- ± ---	DRAWN BY: JDFOX DATE: 2014/08/06 CHECKED BY: MKIPPER DATE: 2014/08/06 APPROVED BY: F SMITH DATE: 2014/08/14	TITLE: .062/(1.57) HOUSINGS PLUG & RECEPTACLE 5 CIRCUIT .145/(3.68)		
		ANGULAR ±1/2°		MATERIAL NO. SEE CHART		DOCUMENT NO. SD-1625-5*		SHEET NO. 2 OF 2		
		DRAFT WHERE APPLICABLE MUST REMAIN WITHIN DIMENSIONS		THIS DRAWING CONTAINS INFORMATION THAT IS PROPRIETARY TO MOLEX INCORPORATED AND SHOULD NOT BE USED WITHOUT WRITTEN PERMISSION						