

Excellent Integrated System Limited

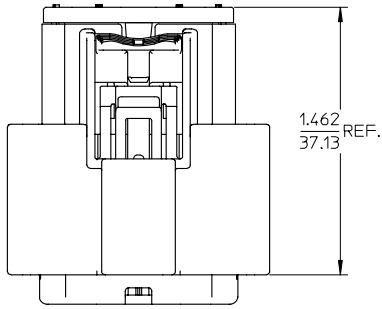
Stocking Distributor

Click to view price, real time Inventory, Delivery & Lifecycle Information:

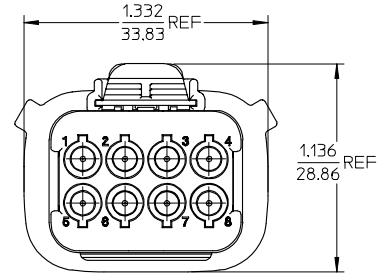
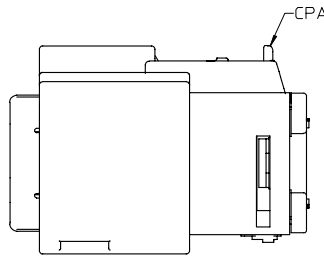
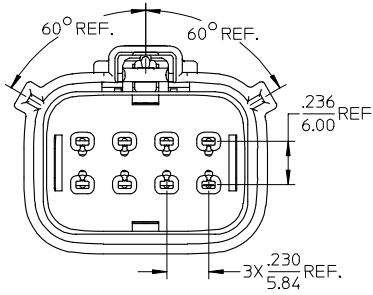
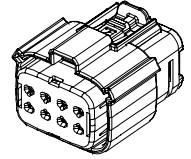
[Molex Connector Corporation](#)
[19418-0023](#)

For any questions, you can email us directly:

sales@integrated-circuit.com



| | | |
|-----------------|-------------|-----|
| 194180023 | 16-14 | NO |
| 194180022 | 22-18 | |
| 194180002 | 16-14 | YES |
| 194180001 | 22-18 | |
| MATERIAL NUMBER | UL WIRE AWG | CPA |



NOTES:

- MATERIALS:
HOUSING: POLYESTER (PBT), GLASS FILLED, UL94 V-0, COLOR: BLACK.
SEALS: SILICONE RUBBER.
- PRODUCT SPECIFICATION: PS-19417-001.
- PACKAGING SPECIFICATION: PK-19418-001.
- MATES WITH: 19419 SERIES PLUG ASSEMBLIES.
- USE CONNECTOR WITH FEMALE CRIMP TERMINAL SERIES 19420.

| | | | | | | | |
|-------------------------------------------------------------------------------------------------------------------------------|-------------------------------|---------------------------------------|------------------------|--------------------------------------------|-----------------------|----------------------|-----------------------------------------|
| REVISED EC NO. DRAWN: JPAWL ICK CHKD: JPAWL ICK APPR: JPAWL ICK REV B1 | QUALITY SYMBOLS ▽=0 ▽=0 | GENERAL TOLERANCES (UNLESS SPECIFIED) | | DIMENSION STYLE IN/MM | SCALE 1:1 | DESIGN UNITS INCH | THIRD ANGLE PROJECTION |
| | | 4 PLACES ± .005 ± .005 | 3 PLACES ± .005 ± .015 | 2 PLACES ± 0.38 ± .005 | 1 PLACE ± .005 ± .005 | ANGULAR ± 1° | DRAWN BY BRUPERT DATE 12/06/02 |
| DRAFT WHERE APPLICABLE MUST REMAIN WITHIN DIMENSIONS | | MATERIAL NO. SEE CHART | | APPROVED BY RDEROSS DATE 12/06/02 | | MOLEX INCORPORATED | |
| | | SIZE B | | DOCUMENT NO. SD-19418-003 | | SHEET NO. 1 OF 1 | |
| THIS DRAWING CONTAINS INFORMATION THAT IS PROPRIETARY TO MOLEX INCORPORATED AND SHOULD NOT BE USED WITHOUT WRITTEN PERMISSION | | | | | | | |