

## Excellent Integrated System Limited

Stocking Distributor

Click to view price, real time Inventory, Delivery & Lifecycle Information:

[Schurter](#)  
[5500.2045](#)

For any questions, you can email us directly:

[sales@integrated-circuit.com](mailto:sales@integrated-circuit.com)

AC Filter



**Description**

- Line-filter in standard version
- 1-stage
- standard attenuation

**Approvals**

- VDE Certificate Number: 40004673
- UL File Number: E72928

**Characteristics**

- Designed for high current applications
- Compact design
- Protection against interference voltage from the mains
- Possible interferences generated in the equipment are strongly attenuated
- For standard and industrial applications
- Suitable for use in equipment according to IEC/UL 60950

**References**

Alternative: Standard version

**Weblinks**

[pdf-datasheet](#), [html-datasheet](#), [General Product Information](#), [Approvals](#), [CE declaration of conformity](#), [RoHS](#), [CHINA-RoHS](#), [REACH](#), [Distributor-Stock-Check](#), [Detailed request for product](#)

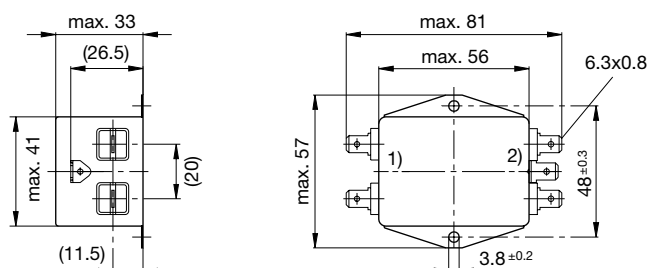
**Technical Data**

|                           |   |
|---------------------------|---|
| Ratings IEC               | 10 - 20A @ Ta 40 °C / 250VAC; 50Hz  |
| Ratings UL/CSA            | 10 - 20A @ Ta 40 °C / 125VAC; 60Hz  |
| Leakage Current           | industrial < 2.1 mA (250V / 60Hz)   |
| Dielectric Strength       | > 1.7 kVDC between L-N<br>> 2.7 kVDC between L/N-PE<br>Test voltage (2 sec) |
| Allowable Operation Temp. | -25 °C to 100 °C  |
| Climatic Category         | 25/100/21 acc. to IEC 60068-1   |
| Protection Class          | Suitable for appliances with protection class I acc. to IEC 61140           |
| Terminal                  | Quick connect terminals 6.3 x 0.8 mm  |
| Material: Housing         | Aluminum  |

|             |   |
|-------------|---|
| Line Filter | Standard and Industrial Version, IEC 60939, UL 1283, CSA C22.2 no. 8<br><a href="#">Technical Details</a> |
| MTBF        | > 200'000h acc. to MIL-HB-217 F   |

**Dimension**

Case 10



1) Line

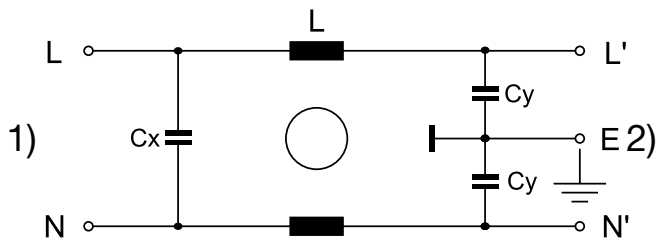
2) Load

# FMW-55

**1-Phase AC Filters / DC Filters**  
[www.schurter.com/PG84](http://www.schurter.com/PG84)

## Diagrams

Standard version



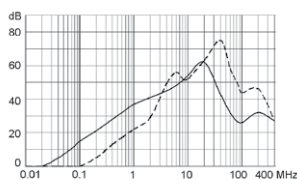
- 1) Line  
 2) Load

## Attenuation Loss

Standard version

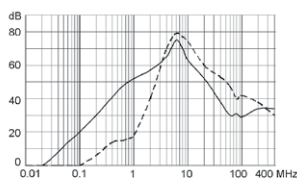
--- 50Ω differential mode    \_\_\_\_ 50Ω common mode

10 A

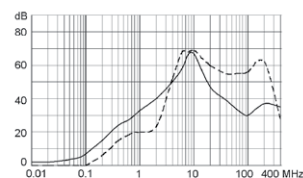


Industrial version

10 A



20 A



## All Variants

| Rated Current [A] | Filter-Type        | Leakage Current [mA] | L [mH]   | Cx (X2) [nF] | Cy (Y2) [nF] | Weight [g] | Housings | Order Number              |
|-------------------|--------------------|----------------------|----------|--------------|--------------|------------|----------|---------------------------|
| 10                | Standard Version   | 0.25                 | 2 x 1    | 68           | 2.2          | 160 g      | 10       | <a href="#">5500.2045</a> |
| 10                | Industrial Version | 2.1                  | 2 x 1    | 68           | 22           | 140 g      | 10       | <a href="#">5500.2046</a> |
| 20                | Industrial Version | 2.1                  | 2 x 0.15 | 68           | 22           | 140 g      | 10       | <a href="#">5500.2047</a> |

Most Popular.

Availability for all products can be searched real-time: <http://www.schurter.com/Stock-Check/Stock-Check-SCHURTER>

## Packaging unit

10 Pcs