

Excellent Integrated System Limited

Stocking Distributor

Click to view price, real time Inventory, Delivery & Lifecycle Information:

[Knowles](#)

[FK-26260-000](#)

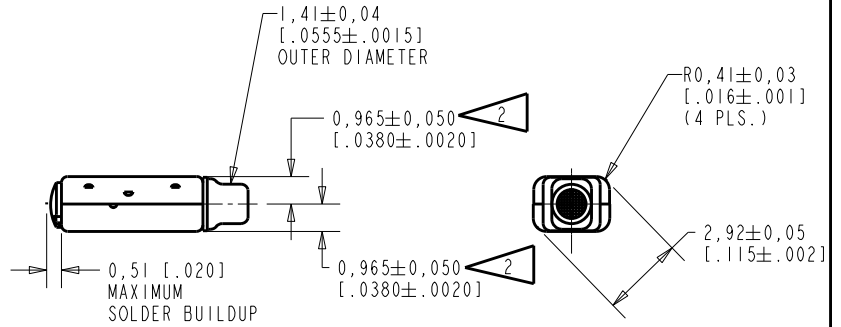
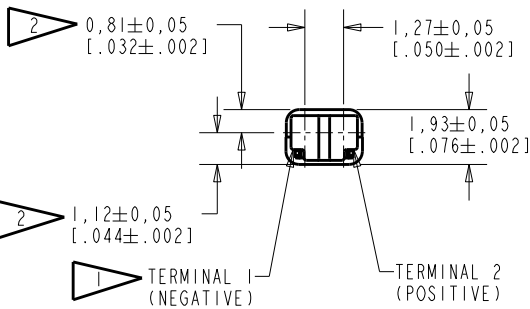
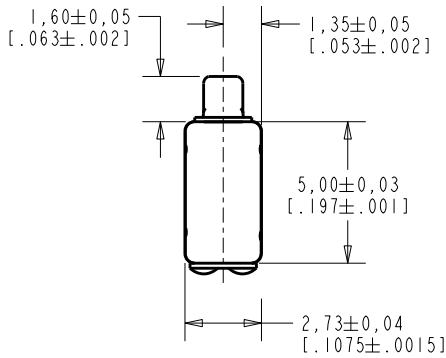
For any questions, you can email us directly:

sales@integrated-circuit.com

FK-26260-000
SHT 1.1

NOTES:

- 1 A POSITIVE GOING VOLTAGE AT TERMINAL 2, RELATIVE TO TERMINAL 1, CAUSES A DECREASE IN PRESSURE AT THE SOUND OUTLET.
- 2 LOCATED FROM TWO SURFACES FOR CUSTOMER CONVENIENCE. ONLY APPLICABLE FROM ONE SURFACE, NOT TO BE USED TOGETHER.



NOMINAL WEIGHT .11 GRAMS
 SCALE 2:1 DIMENSIONS IN MILLIMETERS [INCHES]

Revision	C.O. #	Implementation Date	RELEASE LEVEL	REVISION
E	C10114032	11-7-12	Active	E
D	C1011598	8-17-10		

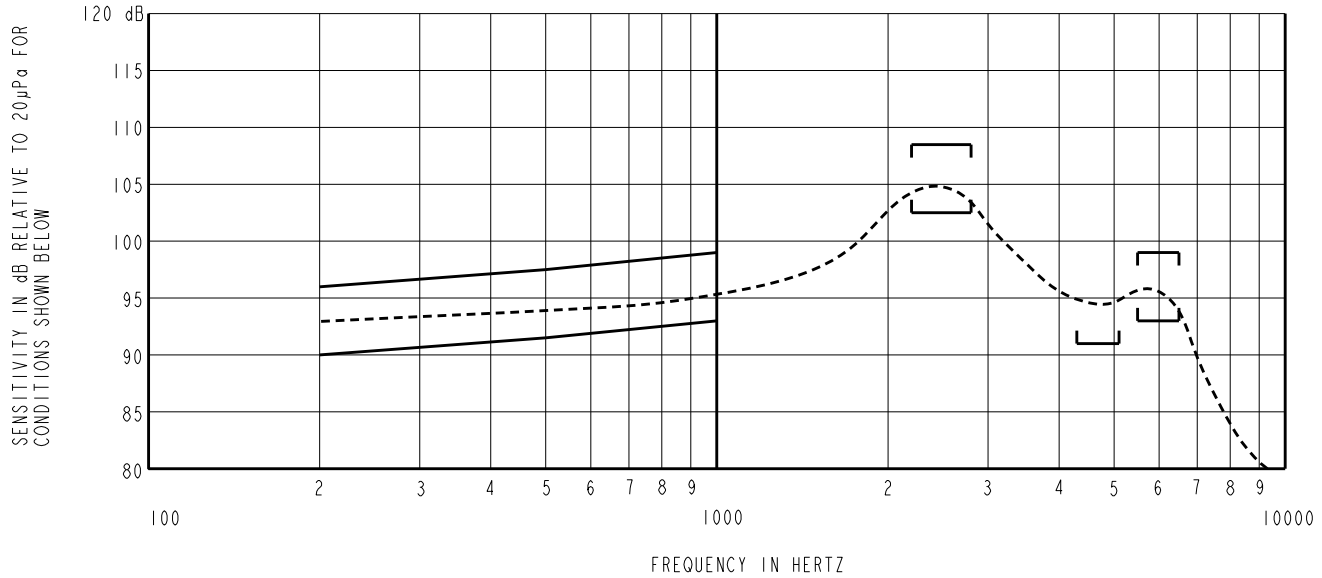
KNOWLES ELECTRONICS
ITASCA, ILLINOIS U.S.A.

SCALE: 5:1	DR. BY: MMM	DATE: 9-6-05
DO NOT SCALE DRAWING	CK. BY: GJP	DATE: 9-12-05
TITLE: RECEIVER	APP. BY: GJP	DATE: 9-12-05
OUTLINE DRAWING	FK-26260-000	SHT 1.1

TYPE II DAMPING

FK-26260-000

SHEET 2.1



ACOUSTICAL

SENSITIVITY
 DEVICE PRODUCE THE SPL LISTED BELOW UNDER TEST CONDITIONS IN TABLE 3.
 NOMINAL SENSITIVITY AT 1KHz IS dB RELATIVE TO 20 µPa.

FREQUENCY (Hz)	MINIMUM	NOMINAL	MAXIMUM
200	90.0	93.0	96.0
500	91.5	94.5	97.5
1000	92.5	95.5	98.5
2200-2800	102.5	110.5	108.5
4100-4900	91.0	---	---
5500-6500	93.0	96.3	99.5

PORT LOCATION: 12S

TABLE 1

TOTAL HARMONIC DISTORTION
 DEVICE WILL NOT EXCEED TOTAL HARMONIC DISTORTION LEVELS LISTED BELOW.

FREQUENCY (Hz)	AC DRIVE (mA rms)	DC BIAS (mA)	LIMIT (%)
800	0.84	0	5
2400	1.68	0	10

TABLE 2

TEST CONDITIONS

NOMINAL SOURCE VOLTAGE	0.84 mA rms, 0 mA DC BIAS
SOURCE IMPEDANCE	<1 Ohm
TUBING	10mm [.394"] LONG, 1mm [.039"] I.D.
COUPLER CAVITY	2 CM ³ , SIMULATED ANSI S3.7 TYPE HA-3 (IEC 60318-5)

TABLE 3

ELECTRICAL

DC RESISTANCE	135 Ohms ± 10%
IMPEDANCE @ 500 Hz	180 Ohms ± 15%
IMPEDANCE @ 1kHz	240 Ohms ± 15%

TABLE 4

ISOLATION: CASE WILL BE ELECTRICALLY ISOLATED FROM THE COIL CIRCUIT.