

Excellent Integrated System Limited

Stocking Distributor

Click to view price, real time Inventory, Delivery & Lifecycle Information:

[EPCOS \(TDK\)](#)
[B39162B7708C510](#)

For any questions, you can email us directly:

sales@integrated-circuit.com



SAW Components

Data Sheet B7708

Data Sheet

A large, stylized graphic of the EPCOS logo is superimposed on a globe. The globe is rendered in a dark, semi-transparent style, showing the outlines of continents. The EPCOS logo, including the stylized triangle and the word "EPCOS", is shown in a light, glowing white color, appearing to be part of the globe's surface.



| | |
|------------------------|--------------------|
| SAW Components | B7708 |
| Low Loss Filter | 1575,42 MHz |

Data Sheet



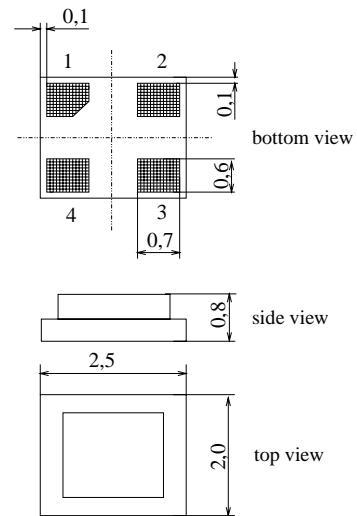
Features

- Low loss RF filter for GPS receivers
- Usable passband 2,0 MHz
- Low amplitude ripple
- Package for **Surface Mounted Technology (SMT)**

Terminals

- Ni, gold-plated

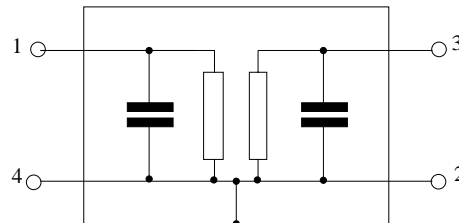
Chip sized SAW package



Dimensions in mm, approx. weight 0,01 g

Pin configuration

- 1 Input, unbalanced
- 3 Output, unbalanced
- 2, 4 To be grounded, Case Ground



| Type | Ordering code | Marking and Package according to | Packing according to |
|-------|-------------------|----------------------------------|----------------------|
| B7708 | B39162-B7708-C510 | C61157-A7-A80 | F61074-V8111-Z000 |

Electrostatic Sensitive Device (ESD)

Maximum ratings

| | | | | |
|---|-----------|-------------|-----|---|
| Operable temperature range | T | - 40 / + 85 | °C | source and load impedance 50 Ω continuous wave signal |
| Storage temperature range | T_{stg} | - 40 / + 85 | °C | |
| DC voltage | V_{DC} | 5 | V | |
| Input power max. 1574,3 ... 1576,7 MHz | P_{IN} | 3 | dBm | |
| 50,0...1535,5 and 1625,5 ... 6000 MHz | P_{IN} | 15 | dBm | |



| | |
|------------------------|--------------------|
| SAW Components | B7708 |
| Low Loss Filter | 1575,42 MHz |

Data Sheet



Characteristics

Operating temperature range: $T = -40\text{ °C to }+85\text{ °C}$
 Terminating source impedance: $Z_S = 50\ \Omega$
 Terminating load impedance: $Z_L = 50\ \Omega$

| | | min. | typ. | max. | |
|--------------------------------------|-------------------------|------|---------|------|-----|
| Center frequency | f_C | — | 1575,42 | — | MHz |
| Maximum insertion attenuation | α_{max} | | | | |
| | 1574,22 ... 1576,62 MHz | — | 2,4 | 3,5 | dB |
| Amplitude ripple (p-p) | $\Delta\alpha$ | | | | |
| | 1574,22 ... 1576,62 MHz | — | 0,1 | 1,0 | dB |
| Group delay | τ | | | | |
| | 1574,22 ... 1576,62 MHz | — | 35 | 50 | ns |
| Attenuation | α | | | | |
| | 50,0 ... 1535,0 MHz | 35 | 42 | — | dB |
| | 1625,0 ... 1630,0 MHz | 30 | 44 | — | dB |
| | 1630,0 ... 3500,0 MHz | 35 | 40 | — | dB |
| | 3500,0 ... 4000,0 MHz | 20 | 35 | — | dB |
| | 4000,0 ... 6000,0 MHz | 10 | 20 | — | dB |
| Return loss | | | | | |
| | 1574,22 ... 1576,62 MHz | 11,0 | 19,0 | — | dB |
| VSWR | | | | | |
| | 1574,22 ... 1576,62 MHz | — | 1,25 | 1,8 | |

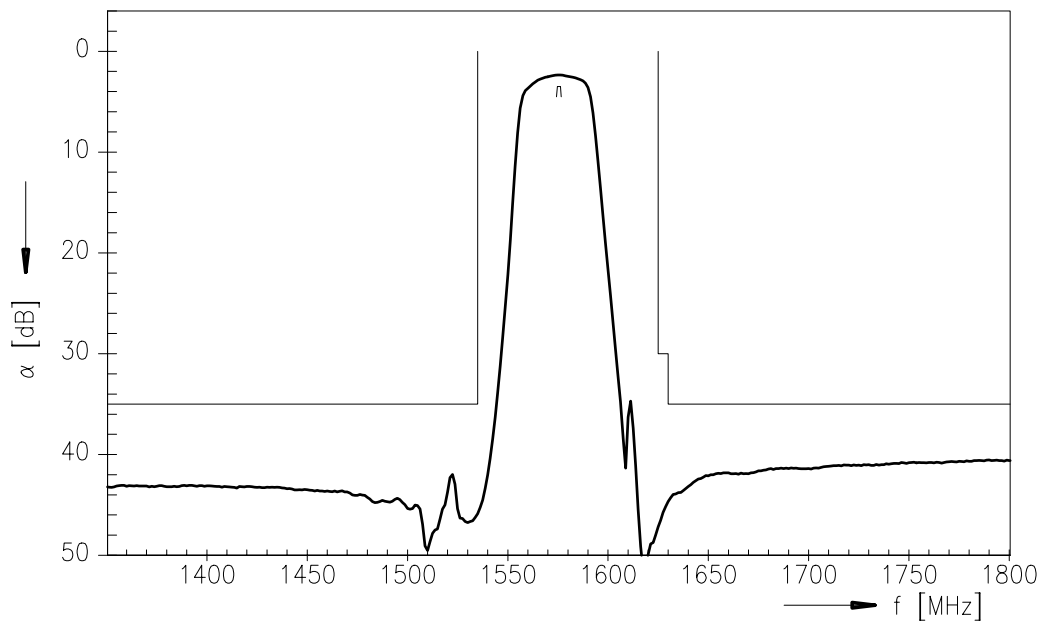


| | |
|------------------------|--------------------|
| SAW Components | B7708 |
| Low Loss Filter | 1575,42 MHz |

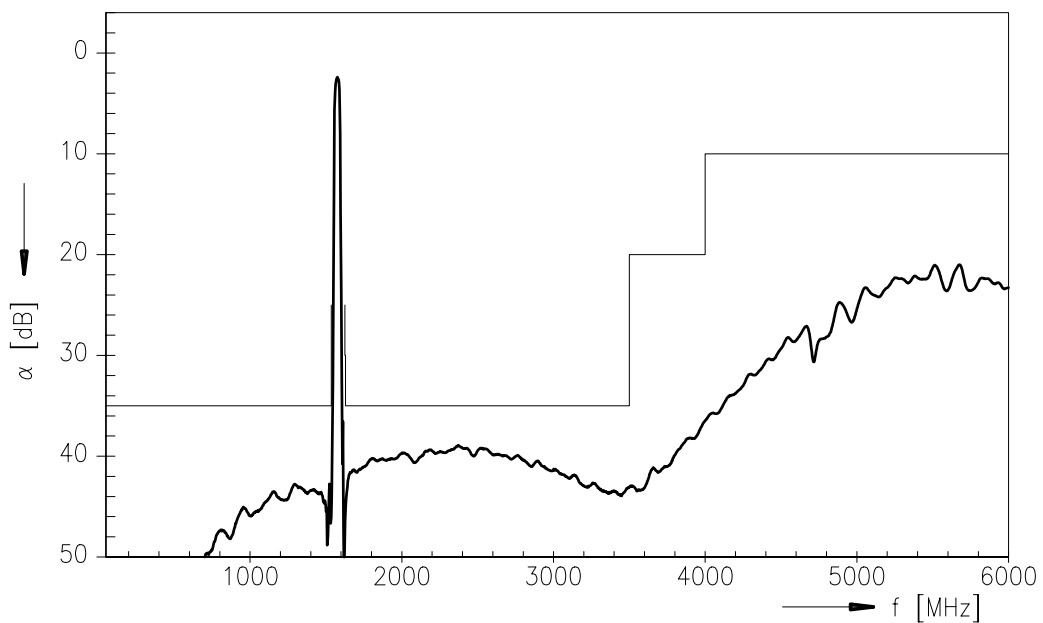
Data Sheet



Transfer function



Transfer function (wide band)





| | |
|------------------------|--------------------|
| SAW Components | B7708 |
| Low Loss Filter | 1575,42 MHz |
| Data Sheet | SMD |

Published by EPCOS AG
Surface Acoustic Wave Components Division, SAW MC IS
P.O. Box 80 17 09, D-81617 München

© EPCOS AG 2001. All Rights Reserved.

As far as patents or other rights of third parties are concerned, liability is only assumed for components per se, not for applications, processes and circuits implemented within components or assemblies.

The information describes the type of component and shall not be considered as assured characteristics.

Terms of delivery and rights to change design reserved.

For questions on technology, prices and delivery please contact the sales offices of EPCOS AG or the international representatives.

Due to technical requirements components may contain dangerous substances. For information on the type in question please also contact one of our sales offices.