

Excellent Integrated System Limited

Stocking Distributor

Click to view price, real time Inventory, Delivery & Lifecycle Information:

[EPCOS \(TDK\)](#)
[B39380K2973M100](#)

For any questions, you can email us directly:

sales@integrated-circuit.com



SAW Components

Data Sheet K 2973 M

Data Sheet

A large, stylized graphic of the EPCOS logo is superimposed on a grayscale image of a globe. The logo is rendered in a light, glowing white color, making it stand out against the darker background of the globe. The globe shows continents and oceans, with the EPCOS logo appearing to wrap around it.



SAW Components

K 2973 M

IF Filter for Intercarrier Applications

38,00 MHz

Data Sheet

Standard

- B/G
- D/K

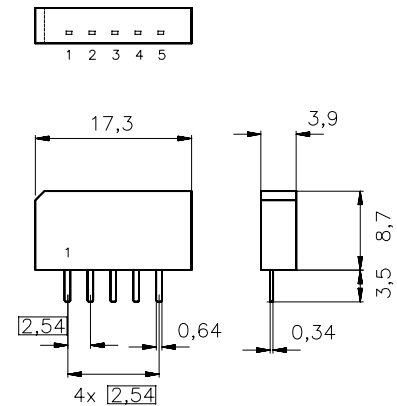
Features

- TV IF filter with Nyquist slope and sound shelf
- Broad sound shelf for sound carriers at 31,50 MHz and 32,50 MHz
- Group delay predistortion

Terminals

- Tinned CuFe alloy

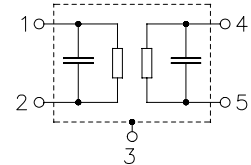
Plastic package **SIP5K**



Dimensions in mm, approx. weight 1,0 g

Pin configuration

- 1 Input
- 2 Input - ground
- 3 Chip - carrier ground
- 4 Output
- 5 Output



Type	Ordering code	Marking and package according to	Packing according to
K 2973 M	B39380-K2973-M100	C61157-A1-A15	F61074-V8067-Z000

Maximum ratings

Operable temperature range	T_A	-25/+65	°C	
Storage temperature range	T_{stg}	-40/+85	°C	
DC voltage	V_{DC}	12	V	between any terminals
AC voltage	V_{pp}	10	V	between any terminals



SAW Components	K 2973 M
IF Filter for Intercarrier Applications	38,00 MHz

Data Sheet

Characteristics

Reference temperature: $T_A = 25\text{ °C}$
 Terminating source impedance: $Z_S = 50\ \Omega$
 Terminating load impedance: $Z_L = 2\text{ k}\Omega \parallel 3\text{ pF}$

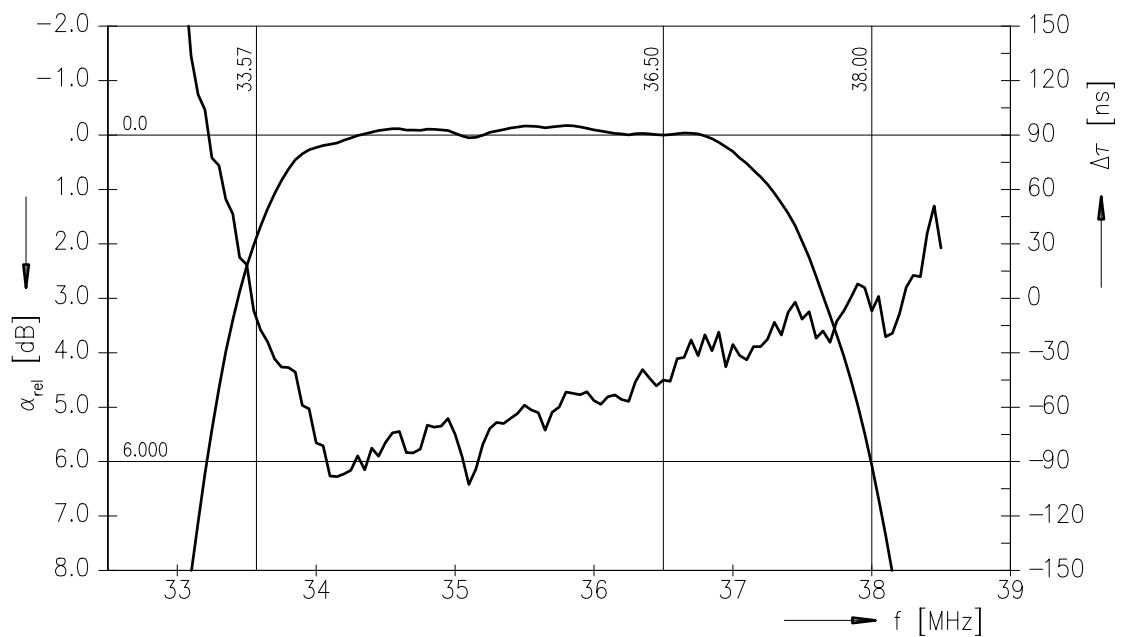
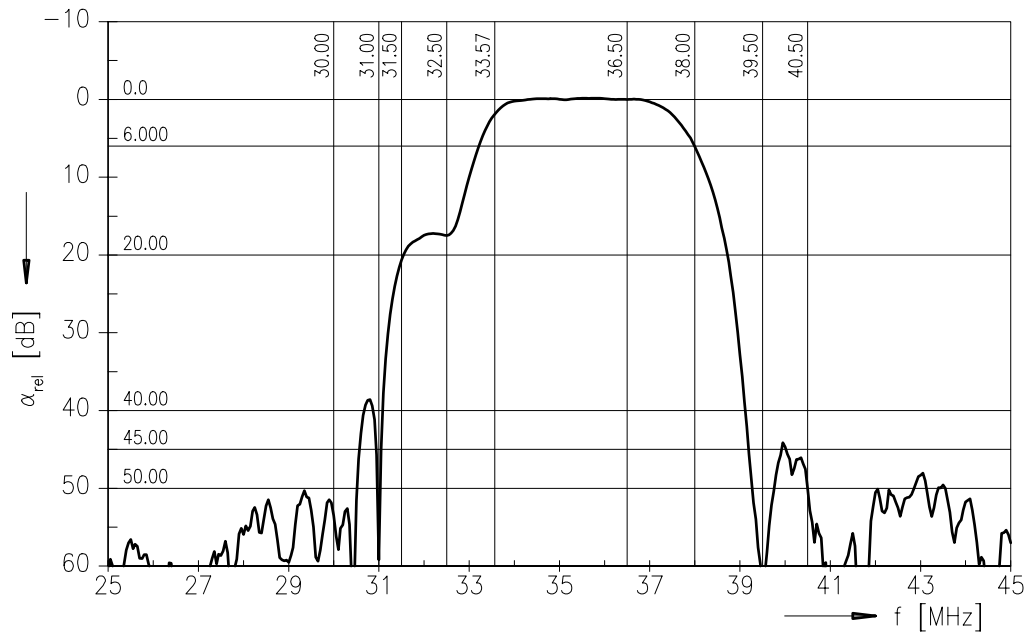
		min.	typ.	max.	
Insertion attenuation					
	α				
Reference level for the following data	36,50 MHz	15,6	17,1	18,6	dB
Relative attenuation					
	α_{rel}				
Picture carrier	38,00 MHz	5,0	6,0	7,0	dB
Color carrier	33,57 MHz	0,7	1,7	2,7	dB
Sound carrier	31,50 MHz	19,1	20,6	22,1	dB
	32,50 MHz	15,8	17,3	—	dB
Adjacent picture carrier	30,00 MHz	45,0	54,0	—	dB
	31,00 MHz	40,0	60,0	—	dB
Adjacent sound carrier	39,50 MHz	43,0	55,0	—	dB
	40,50 MHz	41,0	51,0	—	dB
Lower sidelobe	25,00 ... 30,00 MHz	42,0	48,0	—	dB
Upper sidelobe	39,50 ... 45,00 MHz	40,0	46,0	—	dB
Reflected wave signal suppression					
1,2 μ s ... 6,0 μ s after main pulse (test pulse 250 ns, carrier frequency 36,50 MHz)		42,0	51,0	—	dB
Feedthrough signal suppression					
1,2 μ s ... 1,1 μ s before main pulse (test pulse 250 ns, carrier frequency 36,50 MHz)		50,0	56,0	—	dB
Group delay predistortion					
(reference frequency 38,90 MHz)					
	$\Delta\tau$				
	34,50 MHz	—	-80	—	ns
	33,57 MHz	—	0	—	ns
Impedance at 36,50 MHz					
Input:	$Z_{IN} = R_{IN} \parallel C_{IN}$	—	2,3 \parallel 11,8	—	k Ω \parallel pF
Output:	$Z_{OUT} = R_{OUT} \parallel C_{OUT}$	—	3,5 \parallel 3,1	—	k Ω \parallel pF
Temperature coefficient of frequency					
	TC_f	—	-72	—	ppm/K



SAW Components	K 2973 M
IF Filter for Intercarrier Applications	38,00 MHz

Data Sheet

Frequency response





SAW Components

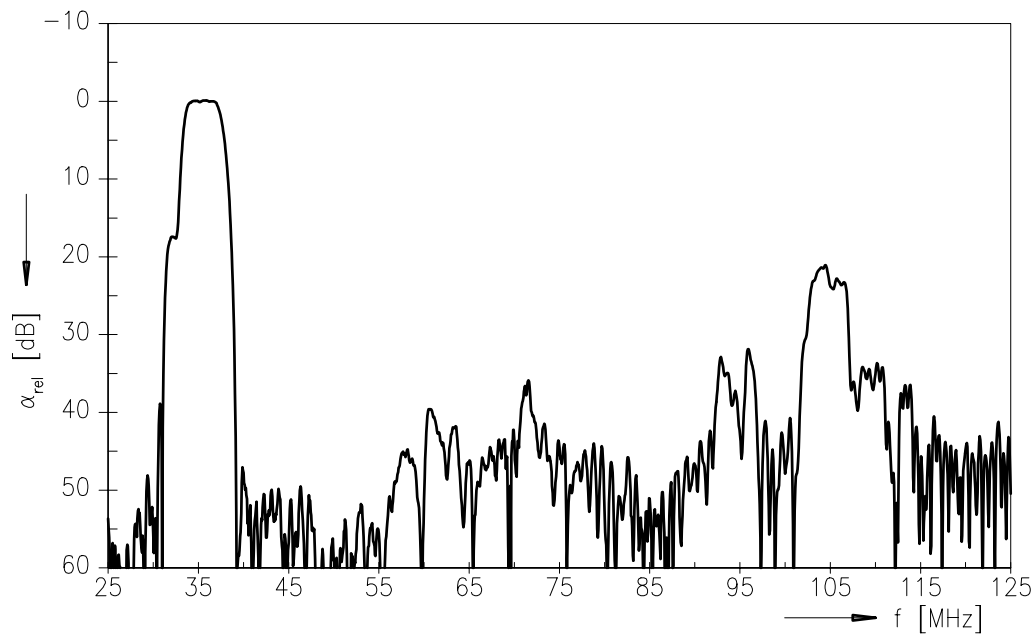
K 2973 M

IF Filter for Intercarrier Applications

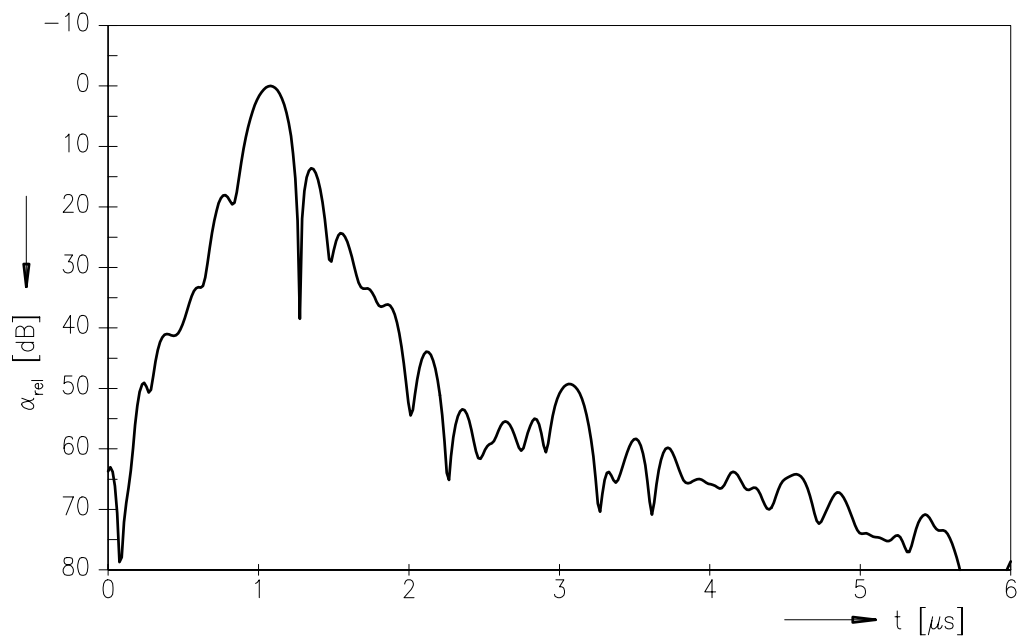
38,00 MHz

Data Sheet

Frequency response



Time domain response





SAW Components	K 2973 M
IF Filter for Intercarrier Applications	38,00 MHz

Data Sheet

Published by EPCOS AG
Surface Acoustic Wave Components Division, SAW CE MM PD
P.O. Box 80 17 09, D-81617 München

© EPCOS AG 2001. All Rights Reserved.

As far as patents or other rights of third parties are concerned, liability is only assumed for components per se, not for applications, processes and circuits implemented within components or assemblies.

The information describes the type of component and shall not be considered as assured characteristics.

Terms of delivery and rights to change design reserved.

For questions on technology, prices and delivery please contact the sales offices of EPCOS AG or the international representatives.

Due to technical requirements components may contain dangerous substances. For information on the type in question please also contact one of our sales offices.