

Excellent Integrated System Limited

Stocking Distributor

Click to view price, real time Inventory, Delivery & Lifecycle Information:

[EPCOS \(TDK\)](#)
[B39841B7703C510](#)

For any questions, you can email us directly:

sales@integrated-circuit.com



SAW Components

Data Sheet B7703

Data Sheet

A large, stylized graphic of the EPCOS logo is superimposed on a grayscale globe. The globe shows the outlines of continents and is set against a dark background. The EPCOS logo is rendered in a light, glowing white color, appearing to wrap around the globe.



SAW Components	B7703
Low-Loss Filter for Mobile Communication	836,5 MHz
Data Sheet	

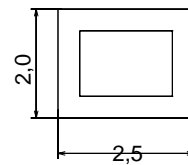
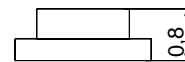
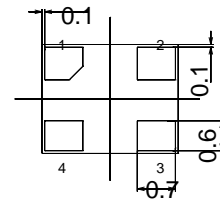
Chip Sized SAW Package **DCS4C**

Features

- Low-loss RF filter for mobile telephone AMPS systems, transmit path
- Low amplitude ripple
- Usable passband 25 MHz
- Package for Surface Mounted Technology (SMT)

Terminals

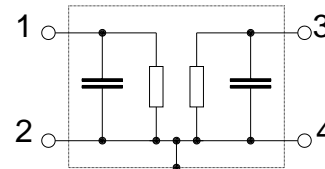
- Gold-plated Ni



Dimensions in mm, approx. weight 0,015 g

Pin configuration

- 1 Input
- 3 Output
- 2, 4 Ground



Type	Ordering code	Marking and Package according to	Packing according to
B7703	B39841-B7703-C510	C61157-A7-A80	F61074-V8104-Z000

Electrostatic Sensitive Device (ESD)

Maximum ratings

Operating temperature range	T	- 30/+ 85	°C	Human Body Model source impedance 50 Ω
Storage temperature range	T_{stg}	- 40/+ 85	°C	
DC voltage	V_{DC}	5	V	
ESD	V_{ESD}	50	V	
Input Power max.	P_{IN}	15	dBm	



SAW Components	B7703
Low-Loss Filter for Mobile Communication	836,5 MHz

Data Sheet



Characteristics

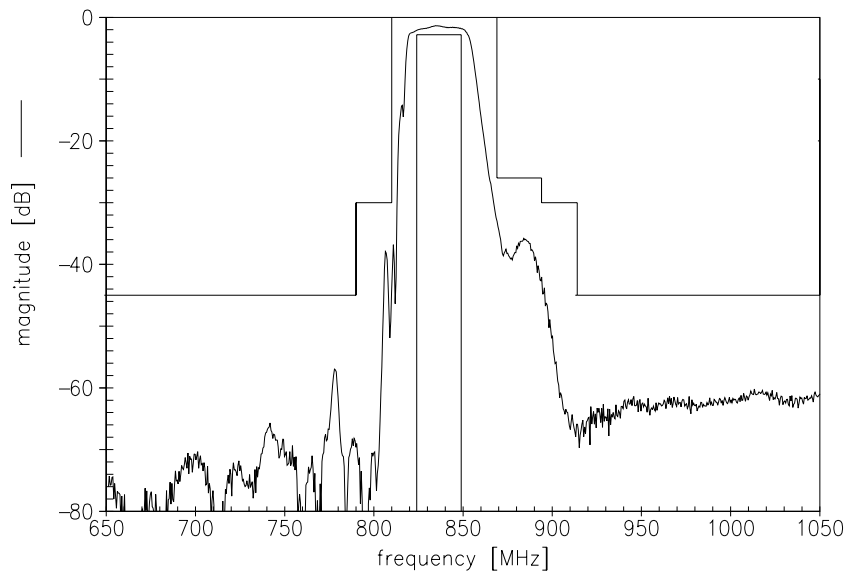
Operating temperature range: $T = -30$ to $+85$ °C
 Terminating source impedance: $Z_S = 50 \Omega$
 Terminating load impedance: $Z_L = 50 \Omega$

				min.	typ.	max.	
Center frequency	f_C			—	836,5	—	MHz
Maximum insertion attenuation	α_{max}	824,0 ... 849,0	MHz	—	2,5	2,8	dB
Amplitude ripple (p-p)	$\Delta\alpha$	824,0 ... 849,0	MHz	—	0,9	1,3	dB
Return loss		824,0 ... 849,0	MHz	—	12,0	10,0	dB
Attenuation	α						
		0,0 ... 790,0	MHz	45,0	56,0	—	dB
		790,0 ... 810,0	MHz	30,0	35,0	—	dB
		869,0 ... 894,0	MHz	26,0	29,0	—	dB
		894,0 ... 914,0	MHz	30,0	40,0	—	dB
		914,0 ...2000,0	MHz	45,0	50,0	—	dB
		2000,0 ...3000,0	MHz	35,0	40,0	—	dB
		3000,0 ...3500,0	MHz	30,0	35,0	—	dB
		3500,0 ...4000,0	MHz	20,0	25,0	—	dB
		4000,0 ...6000,0	MHz	10,0	18,0	—	dB
Rx band suppression	α	869,0 ... 894,0	MHz	26,0	29,0	—	dB

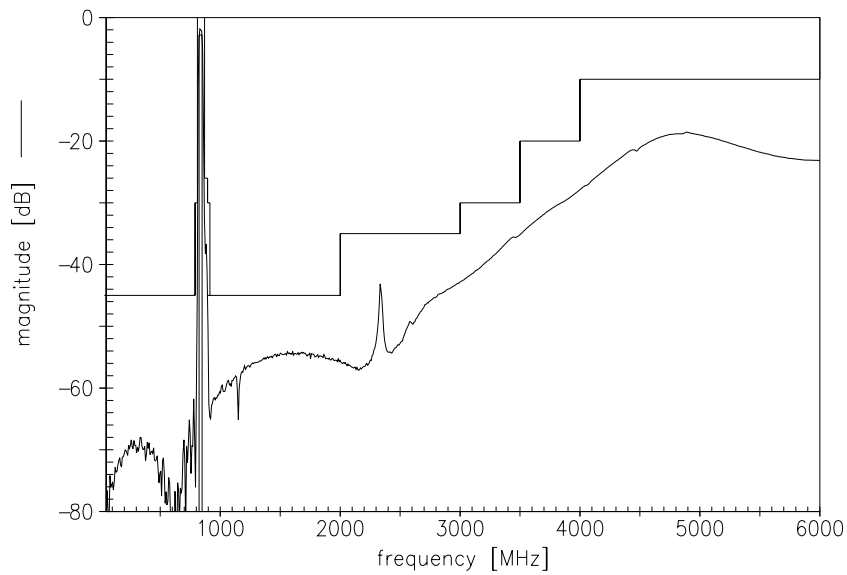


SAW Components	B7703
Low-Loss Filter for Mobile Communication	836,5 MHz
Data Sheet	SMD

Transfer function



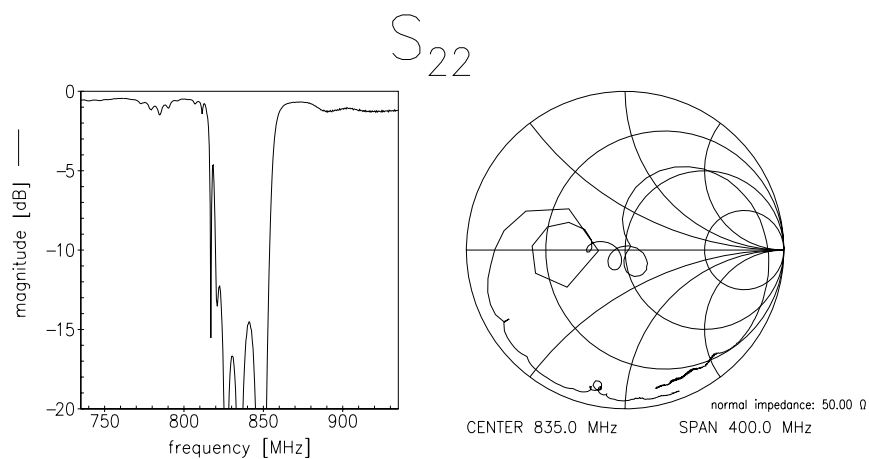
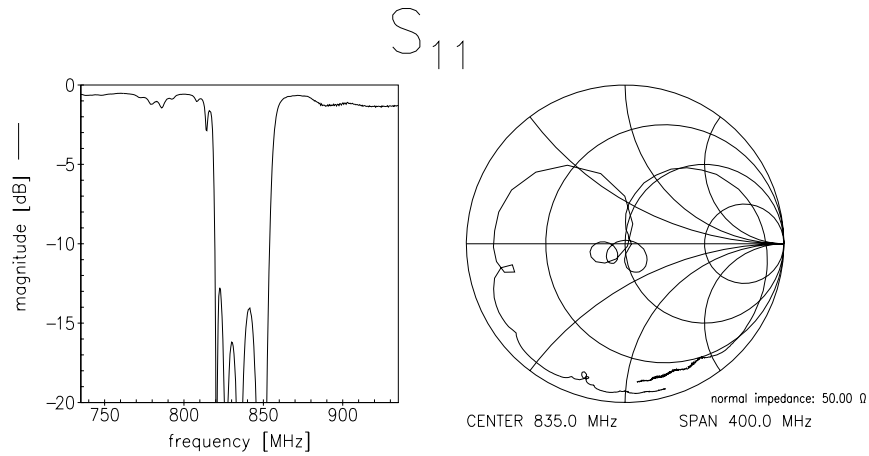
Transfer function (wideband)





SAW Components	B7703
Low-Loss Filter for Mobile Communication	836,5 MHz
Data Sheet	

Reflection functions





SAW Components	B7703
Low-Loss Filter for Mobile Communication	836,5 MHz
Data Sheet	SMD

Published by EPCOS AG
Surface Acoustic Wave Components Division, SAW MC WT PD
P.O. Box 80 17 09, D-81617 München

© EPCOS AG 2001. All Rights Reserved. Reproduction, publication and dissemination of this brochure and the information contained therein without EPCOS' prior express consent is prohibited.

The information contained in this brochure describes the type of component and shall not be considered as guaranteed characteristics. Purchase orders are subject to the General Conditions for the Supply of Products and Services of the Electrical and Electronics Industry recommended by the ZVEI (German Electrical and Electronic Manufacturers' Association), unless otherwise agreed.

This brochure replaces the previous edition.

For questions on technology, prices and delivery please contact the Sales Offices of EPCOS AG or the international Representatives.

Due to technical requirements components may contain dangerous substances. For information on the type in question please also contact one of our Sales Offices.