

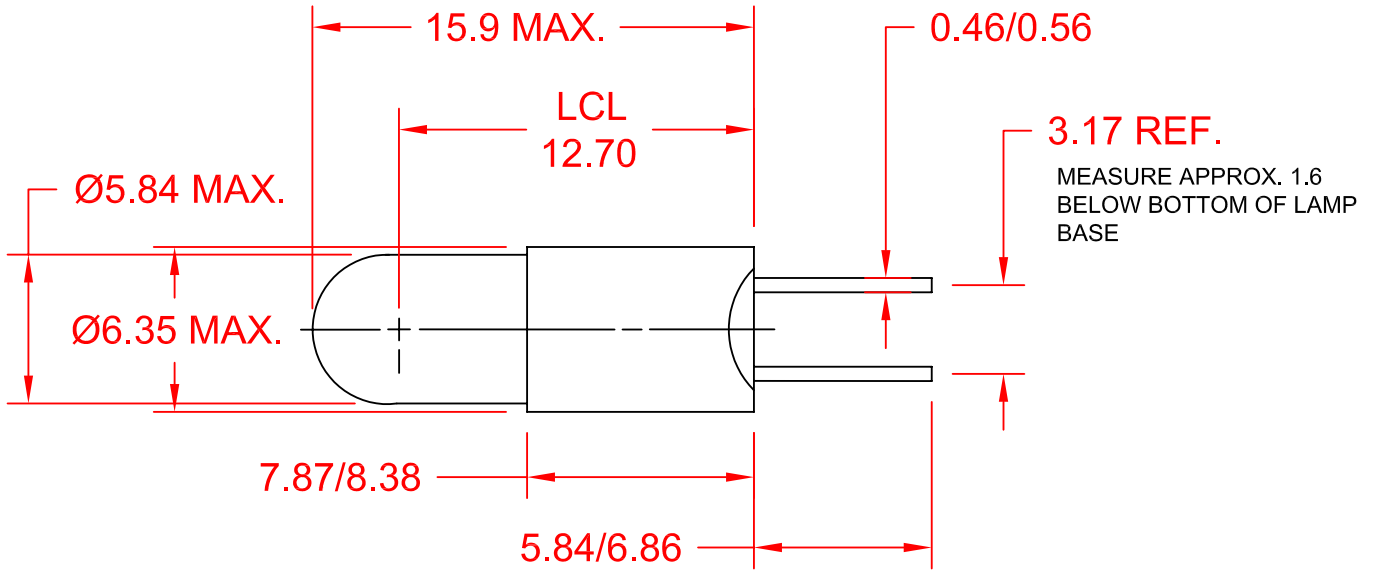
Excellent Integrated System Limited

Stocking Distributor

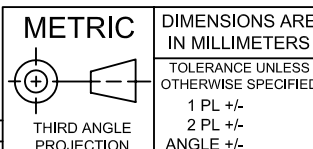
Click to view price, real time Inventory, Delivery & Lifecycle Information:

For any questions, you can email us directly:

sales@integrated-circuit.com



JKL LAMP NUMBER	VOLTS RATED	AMPS ±10%	MSCP ±25%	LUMENS ±25%	AVERAGE LIFE HRS.	FILAMENT TYPE
7868	2.5	.350	.200	2.51	20,000	C-2R
7838	2.7	.060	.040	0.50	6,000	C-2R
7375	3.0	.015	.003	0.04	10,000	C-6
7361	5.0	.060	.050	0.63	100,000	C-2R
3149	5.0	.060	.150	1.89	5,000	C-2R
7362	5.0	.115	.150	1.89	40,000	C-2R
7945	6.0	.040	.030	0.38	10,000	C-2V
7328	6.0	.200	.630	7.92	1,000	C-2R
7380	6.3	.040	.030	0.38	20,000	C-2F
7377	6.3	.075	.230	2.89	1,000	C-2R
7368	6.3	.150	.450	5.66	3,000	C-2R
7381	6.3	.200	.400	5.03	50,000	C-2F
7349	6.3	.200	.550	6.91	5,000	C-2R
7344	10.0	.014	.004	0.05	50,000	C-2F
7367	10.0	.040	.080	1.01	30,000	C-2F
7371	12.0	.040	.120	1.51	10,000	C-2F
7382	14.0	.080	.300	3.77	50,000	C-2F
7330	14.0	.080	.500	6.29	2,500	C-2F
7373	14.0	.100	.500	6.29	50,000	C-2F
FB33	14.0	.125	.700	8.80	4,000	C-2F
7370	18.0	.040	.150	1.89	10,000	C-2F
7001	24.0	.050	.500	6.29	2,000	C-2F
7374	28.0	.040	.200	2.51	50,000	C-2F
7387	28.0	.040	.300	3.77	25,000	C-2F
7327	28.0	.040	.340	4.27	4,000	C-2F
7876	28.0	.060	.340	4.27	25,000	C-2F
7376	28.0	.065	.650	8.17	5,000	C-2F
FB32	32.0	.040	.300	3.77	10,000	C-2F



JKL COMPONENTS CORPORATION

TITLE
T-1 3/4 STANDARD BI-PIN BASED LAMPS

REV. NO.	DESCRIPTION/ECO NUMBER	APPV'D DATE	DRAWN BY	APPV'D BY DATE	SIZE	FSCM NO.	DRAWING NO.	RELEASED DATE	REVISION DATE	REV. NO.	SHEET
B	DIMENSION CHANGES	6/5/08	L. WENGSTROM	L.R. 6/5/08	A	55335	BI-PIN T-1 3/4	2/24/00	6/5/08	B	1 OF 1
A	DELETE CANCELLED PART NO. 7459	7/21/05									
	RELEASED - CANCEL SM-STDBP-T 1 3/4	2/24/00									
			- CAD DRAWING -		SCALE						
			MANUAL REVISIONS NOT PERMITTED		NONE						