

Excellent Integrated System Limited

Stocking Distributor

Click to view price, real time Inventory, Delivery & Lifecycle Information:

[Molex Connector Corporation](#)
[0847000002](#)

For any questions, you can email us directly:

sales@integrated-circuit.com

ASSEMBLY NOTES:

1. SLIDE COMPONENTS ONTO CABLE AS SHOWN
REF. ITEMS 1, 2 & 4 ARE PRE-ASSEMBLED
2. CABLE PREP: (SEE SHEET 2)
3. PULL TERMINATED RJ-45 PLUG (#7) INTO PLUG HOLDER (#4)
WITH LOCKING TAB ALIGNED WITH SLOT ON PLUG HOLDER
DEPRESS LOCKING TAB DOWN BEFORE SEATING PLUG
INTO FINAL POSITION
4. INSTALL RETAINER WEDGE (#5) INTO SLOT LOCATED ON
UNDERSIDE OF PLUG HOLDER (#4) SEE DETAIL 1
5. TURN SEAL NUT UNTIL CABLE SEAL IS TIGHT ONTO PLUG HOLDER
AND CABLE JACKET IS SECURELY CLAMPED
6. SLIDE COUPLING RING (#3) INTO POSITION SHOWN ON ASSEMBLY VIEW

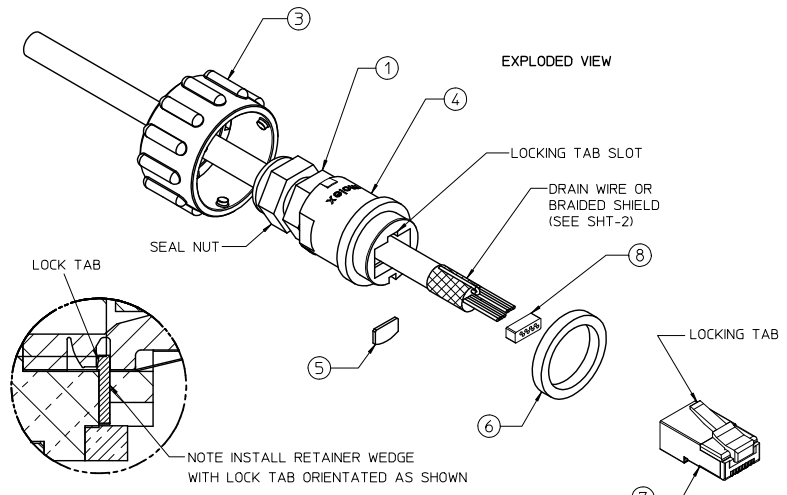
NOTES:

1. MATERIAL: SEE TABLE
2. FINISHES: SEE TABLE
3. PACKAGING: PARTS ARE PACKED IN A
CLEAR POLY BAG ALONG WITH ASSEMBLY
INSTRUCTIONS
5. ASSEMBLY IS RoHS COMPLIANT

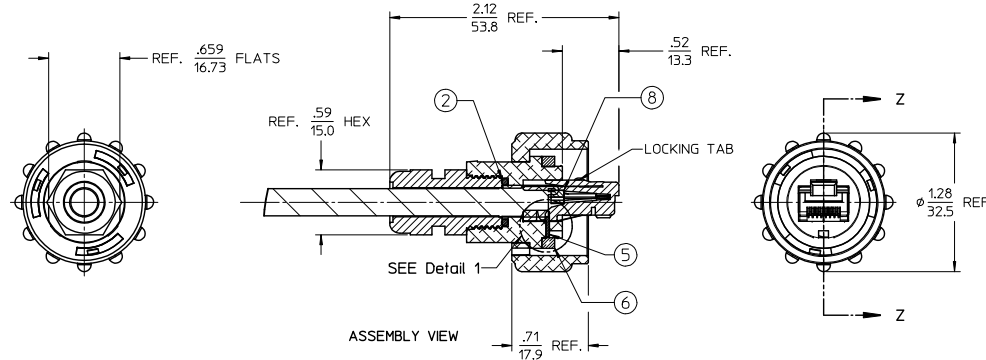
ENGINEERING SPECS:

1. WIRE RANGE:
OD: .217IN/5.51mm TO .256IN/6.50mm
CONDUCTOR TYPE: SOLID OR STRANDED
CONDUCTOR RANGE: 22 TO 28 AWG
CONDUCTOR OD RANGE: .037IN/0.94mm TO .042IN/1.07mm
2. ELECTRICAL SPECS (RJ-45)
A. VOLTAGE: 30VAC/42VDC
B. CURRENT: 1.5 AMPS
3. OPERATING TEMP: -40°C TO 85°C (-40°F TO 185°C)

(A) REF. THIS DRAWING SUPERSEDES SD-84700-0002 REV-C



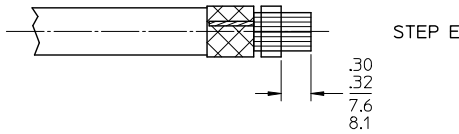
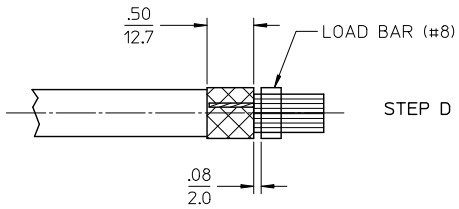
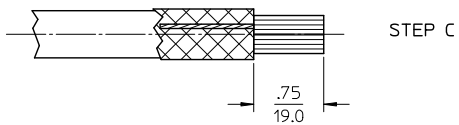
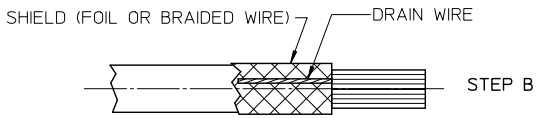
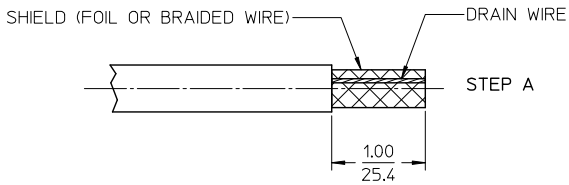
Detail 1
Scale 5:1



8	1	LOAD BAR	POLYCARBONATE	
7	1	RJ-45 PLUG (SHIELDED)	POLYCARB/Cu ALLOY	GOLD PLATED CONTACTS
6	1	GASKET SEAL	NITRILE	BLACK
5	1	RETAINER WEDGE	POLYESTER (PBT)	BLACK
4	1	PLUG HOLDER	POLYESTER (PBT)	BLACK
3	1	COUPLING RING (BAYONET LOCK)	POLYESTER (PBT)	BLACK
2	1	O-RING	NITRILE	
1	1	CABLE SEAL ASSEMBLY	NYLON/TPE GLAND	BLACK
ITEM	QTY.	DESCRIPTION	MATERIAL	FINISH

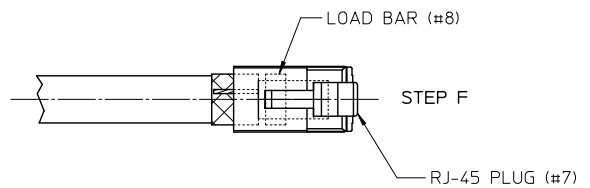
REDRAWN - ADDED NOTES EC NO: IPG2013-1456 DRAWN BY: RSTONE 2013/03/19 CHECKED BY: B RUPERT 2013/03/22 APPROVED BY: JFMURPHY 2013/06/24	QUALITY SYMBOLS ▽=0 ▽=0	GENERAL TOLERANCES (UNLESS SPECIFIED) 4 PLACES ± --- ± --- 3 PLACES ± --- ± --- 2 PLACES ± --- ± --- 1 PLACE ± 0.3 ± .01 0 PLACE ± --- ± ---	DIMENSION STYLE IN/MM	SCALE: 1.5:1 DESIGN UNITS: INCH THIRD ANGLE PROJECTION	TITLE: RJ-45 PLUG ASSEMBLY FIELD WIRED		
		DRAWN BY: RSTONE DATE: 2013/03/19 CHECKED BY: B RUPERT DATE: 2013/03/22 APPROVED BY: JFMURPHY DATE: 2013/06/24	MATERIAL NO.: 847000002 DOCUMENT NO.: SD-84700-012	SHEET NO.: 1 OF 2			
		DRAFT WHERE APPLICABLE MUST REMAIN WITHIN DIMENSIONS			THIS DRAWING CONTAINS INFORMATION THAT IS PROPRIETARY TO MOLEX INCORPORATED AND SHOULD NOT BE USED WITHOUT WRITTEN PERMISSION		
		© 2012 MOLEX CONNECTOR CORPORATION					

10 9 8 7 6 5 4 3 2 84700



CABLE PREP:

- A. STRIP OUTER INSULATION 1.00 IN
- B. FOLD DRAIN WIRE AND OR BRAIDED SHIELD (SEE REF. NOTE) BACK OVER OUTER JACKET
- C. TRIM WIRES STRAIGHT TO .75 INCHES AND ARRANGE THEM IN PROPER ORDER
- D. TRIM DRAIN WIRE AND OR SHIELD AS SHOWN THEN SLIDE LOAD BAR (#8) ON TO WIRES TO .08 INCHES AHEAD OF JACKET
- E. TRIM WIRES TO .30 TO .32 (AHEAD OF LOAD BAR)
- F. ALIGN RJ-45 PLUG (#7) AND INSERT PREPARED CABLE INTO BACK OF PLUG UNTIL WIRES ARE SEATED INTO PLUG VERIFY WIRE POSITIONS BEFORE FINAL TERMINATION IS COMPLETED
- G. CRIMP WITH RECOMMENDED HAND TOOL:
SENTINEL CONNECTOR SYSTEMS P/N: 900000/900208 OR 900005/900216-1



REF. NOTE: STEPS MAY VARY DEPENDING ON TYPE OF SHIELDING USED ON CABLE.

SEE SHEET 1 EC NO: JGG2013-1456 DRAWN BY: RSTONE CHECKED BY: B RUPERT APPROVED BY: JFMURPHY	QUALITY SYMBOLS ▽=0 ▽=0	GENERAL TOLERANCES (UNLESS SPECIFIED)		DIMENSION STYLE IN/MM		SCALE 1.5:1	DESIGN UNITS INCH	THIRD ANGLE PROJECTION
		4 PLACES ± --- ± --- 3 PLACES ± --- ± --- 2 PLACES ± --- ± --- 1 PLACE ± 0.3 ± .01 0 PLACE ± --- ± ---	mm INCH ± --- ± --- ± --- ± --- ± --- ± --- ± --- ± ---	DRAWN BY: RSTONE DATE: 2013/03/19	CHECKED BY: B RUPERT DATE: 2013/03/22	TITLE RJ-45 PLUG ASSEMBLY FIELD WIRED		molex
A	REV	ANGULAR ± 2 ° DRAFT WHERE APPLICABLE MUST REMAIN WITHIN DIMENSIONS		MATERIAL NO. SEE SHEET 1		DOCUMENT NO. SD-84700-012		SIZE B

9 8 7 6 5 4 3 2 1