

## Excellent Integrated System Limited

Stocking Distributor

Click to view price, real time Inventory, Delivery & Lifecycle Information:

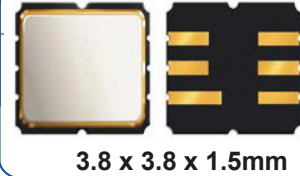
[Abracon Corporation](#)

[AFS869S3](#)

For any questions, you can email us directly:

[sales@integrated-circuit.com](mailto:sales@integrated-circuit.com)

# SMD 869.0 MHz SAW FILTER



3.8 x 3.8 x 1.5mm

AFS869S3

APPLICATION: Automotive Electronics/Remote Control

## STANDARD SPECIFICATIONS:

CHARACTERISTICS	UNIT	MIN.	TYP.	MAX.
Center Frequency Fc	MHz	-	869.000	-
Bandwidth	MHz	-	Fc ± 4.0	-
Insertion Loss @ Passband	dB	-	-	4.5
Ripple @ Passband	dB	-	-	1.5
Relative Attenuation				
825.0 ~ 828.0 MHz	dB	40	-	-
846.0 ~ 849.0 MHz	dB	35	-	-
889.0 ~ 892.0 MHz	dB	35	-	-
910.0 ~ 913.0 MHz	dB	40	-	-
DC Voltage	V	10		
Source Power	dBm	10		
Operating Temperature	°C	-30°C to +80°C		
Storage Temperature	°C	-40°C to +85°C		
Terminating Impedance	-	50Ω/0 pF		

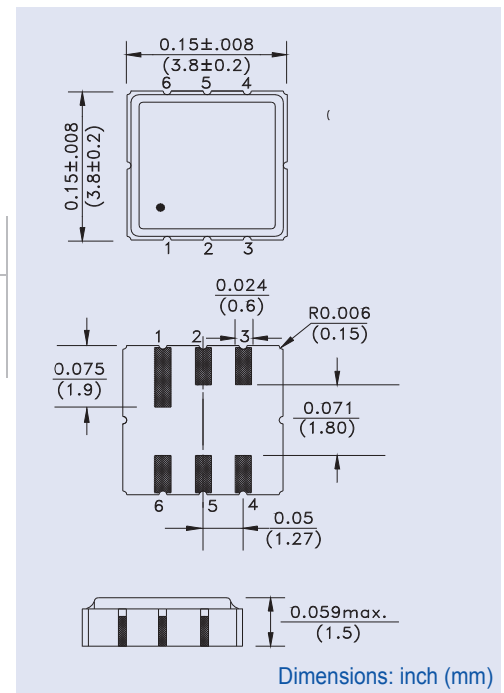
Electrostatic Sensitive Device. Handle with precaution.

## MARKING:

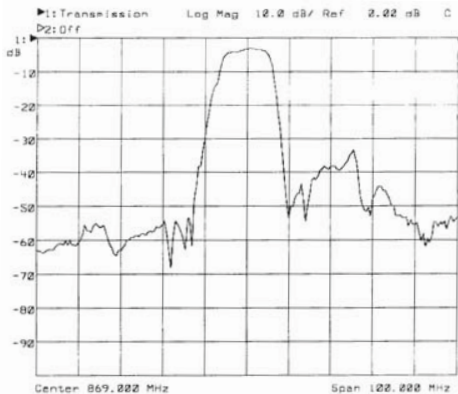
- 869F (869.0 Frequency in MHz)
- AZYX (ZY: Date code Z for month from A to L; Y for year, i.e. 4 for 2004; X: Traceability code)

PIN NO.	CONNECTIONS
2	Input
5	Output
Others	Ground

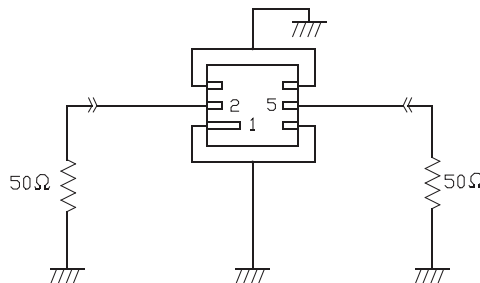
## OUTLINE DRAWING:



## FREQUENCY RESPONSE:



## TEST CIRCUIT:



**ATTENTION:** Abracon Corporation's products are COTS – Commercial-Off-The-Shelf products; suitable for Commercial, Industrial and, where designated, Automotive Applications. Abracon's products are not specifically designed for Military, Aviation, Aerospace, Life-dependant Medical applications or any application requiring high reliability where component failure could result in loss of life and/or property. For applications requiring high reliability and/or presenting an extreme operating environment, written consent and authorization from Abracon Corporation is required. Please contact Abracon Corporation for more information.