

## Excellent Integrated System Limited

Stocking Distributor

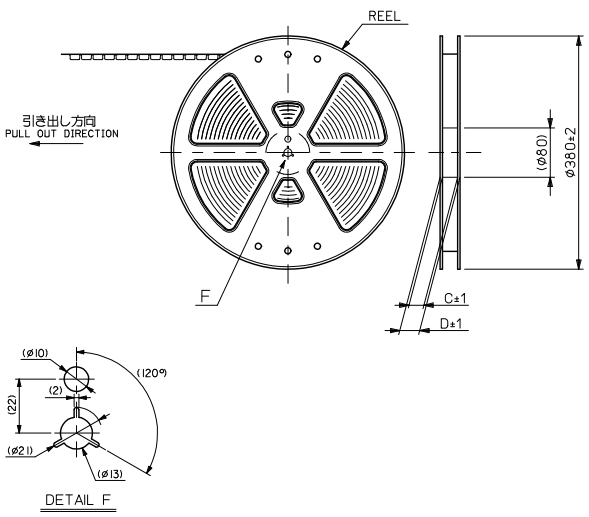
Click to view price, real time Inventory, Delivery & Lifecycle Information:

[Molex Connector Corporation](#)  
[0526101071](#)

For any questions, you can email us directly:

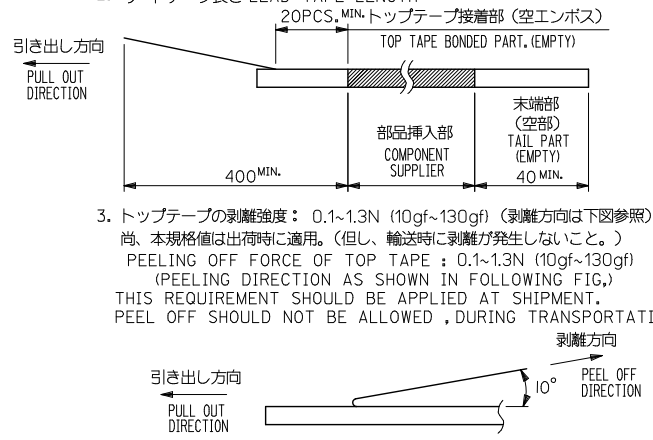
[sales@integrated-circuit.com](mailto:sales@integrated-circuit.com)

10 9 8 7 6 5 4 3 2 1



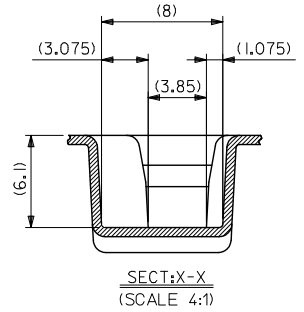
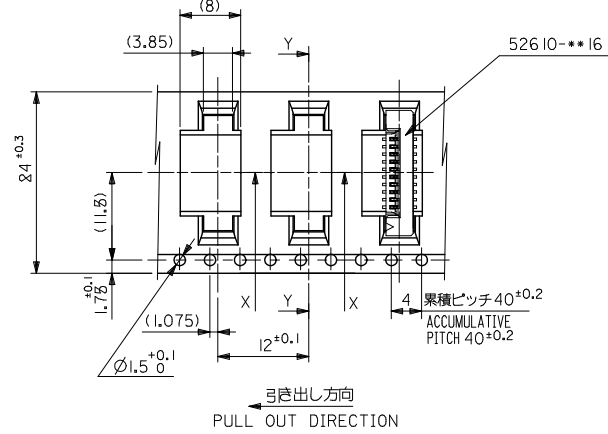
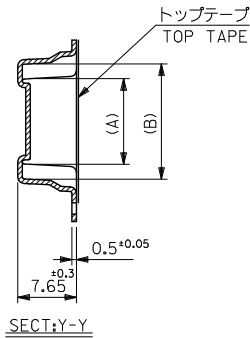
**NOTES**

1. 梱包数量：1000個/リール  
NUMBER OF CONNECTORS：1000PCS/REEL
2. リードテープ長さ LEAD TAPE LENGTH  
20PCS MIN. トップテープ接着部 (空エンボス)  
TOP TAPE BONDED PART. (EMPTY)  
部品挿入部 COMPONENT SUPPLIER  
末端部 (空部) TAIL PART (EMPTY)  
400 MIN. 40 MIN.
3. トップテープの剥離強度：0.1~1.3N (10gf~130gf) (剥離方向は下図参照)  
尚、本規格値は出荷時に適用。(但し、輸送時に剥離が発生しないこと。)  
PEELING OFF FORCE OF TOP TAPE：0.1~1.3N (10gf~130gf)  
(PEELING DIRECTION AS SHOWN IN FOLLOWING FIG.)  
THIS REQUIREMENT SHOULD BE APPLIED AT SHIPMENT.  
PEEL OFF SHOULD NOT BE ALLOWED, DURING TRANSPORTATION.
4. 52610-\*\*-16のアクチュエータはハウジング内に押し下げた状態とする。  
詳細寸法については 製品単体図面を参照下さい。  
ACTUATOR OF PART NO. 52610-\*\*-16 SHOULD BE LOCKED.  
RE DETAILED DIMENSIONS, SEE SALES DRAWING FOR CONNECTOR.
5. 材料 (MATERIAL)  
キャリアテープ (CARRIER TAPE)：ポリプロピレン (POLYPROPYLENE)  
トップテープ (TOPTAPE)：PET, PE, PEF  
リール (REEL)：ポリスチレン (PS) <リサイクル材を含む>  
POLYSTYREN (PS) <RECYCLE MATERIAL CONTAINED>
6. 本製品は 52610-\*\*-90 の鉛フリー品です
7. 本製品は乾燥剤入り、ハイバリア梱包仕様である。  
THIS PRODUCT IS HIGH BARRIER PACKAGE WITH DESICCANT.



|   |                                       |  |                            |                           |  |                        |             |           |
|---|---------------------------------------|--|----------------------------|---------------------------|--|------------------------|-------------|-----------|
| REVISED<br>EC NO. J2009-2061<br>DRAWN BY<br>CHIKDHATSUMOTO 2009/05/21<br>APPROVED BY<br>APPR.NIKITA 2009/05/21                | GENERAL TOLERANCES (UNLESS SPECIFIED) |  | DIMENSION STYLE<br>MM ONLY |                           | SCALE<br>---   | DESIGN UNITS<br>METRIC | 52610-**-71 | MODEL NO. |
|   | 10 UNDER                              | ± 0.2  | DRAWN BY<br>T. UENO        | DATE<br>'03/12/12         | TITLE<br>1.0 FPC CONN SMT<br>ZIF EMBSTP PKG<br>-LEAD FREE-<br>MOLEX INCORPORATED |                        |             |           |
|   | 10 OVER 30 UNDER                      | ± 0.25   | CHECKED BY<br>M. SASAO     | DATE<br>'03/12/12         |  |                        |             |           |
|   | 30 OVER                               | ± 0.3  | APPROVED BY<br>M. SASAO    | DATE<br>'03/12/12         |  |                        |             |           |
| ANGULAR ± 3 °   |                                       | DRAFT WHERE APPLICABLE<br>MUST REMAIN<br>WITHIN DIMENSIONS |                            | MATERIAL NO.<br>SEE TABLE | DOCUMENT NO.<br>SD-52610-038   | SHEET NO.<br>1 OF 5    |             |           |
| THIS DRAWING CONTAINS INFORMATION THAT IS PROPRIETARY TO MOLEX INCORPORATED AND SHOULD NOT BE USED WITHOUT WRITTEN PERMISSION |                                       |  |                            |                           |  |                        |             |           |

10 9 8 7 6 5 4 3 2 1

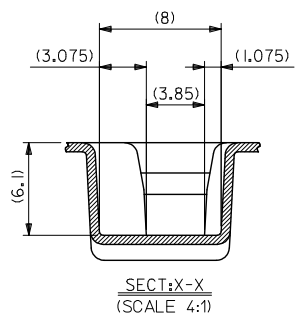
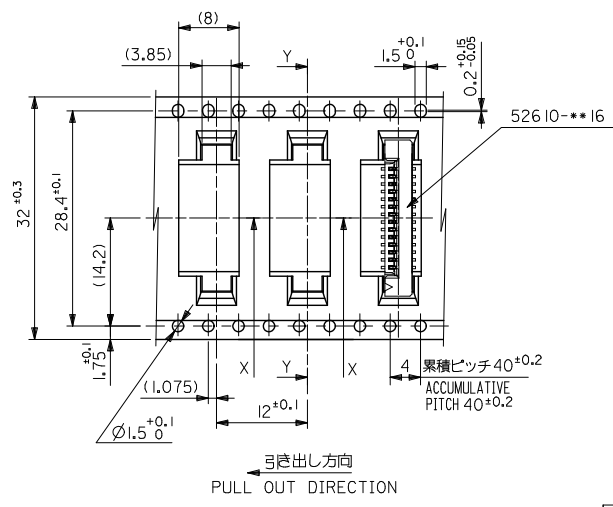
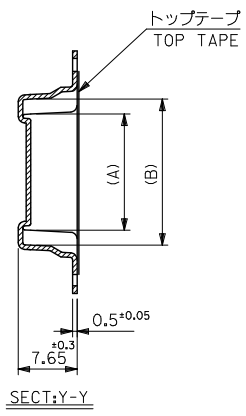


|                                |      |      |       |       |              |            |
|--------------------------------|------|------|-------|-------|--------------|------------|
| 24                             | 29.4 | 25.4 | 15.25 | 11.32 | 52610-1071   | 10         |
|                                |      |      | 14.25 | 10.32 | 52610-0971   | 9          |
|                                |      |      | 13.25 | 9.32  | 52610-0871   | 8          |
|                                |      |      | 12.25 | 8.32  | 52610-0771   | 7          |
|                                |      |      | 11.25 | 7.32  | 52610-0671   | 6          |
|                                |      |      | 10.25 | 6.32  | 52610-0571   | 5          |
| キャリアテープ幅<br>CARRIER TAPE WIDTH | D    | C    | (B)   | (A)   | MATERIAL NO. | 種数<br>CKT. |

|   |                                       |              |   |              |   |             |                     |  |
|---|---------------------------------------|--------------|---|--------------|---|-------------|---------------------|--|
| REVISED<br>IEC NO. J2009-2061<br>2009/05/20<br>DRAWN: KON<br>2009/05/21<br>CHK: HATSUMOTO<br>2009/05/21<br>APPR: NIKITA<br>2009/05/21 | GENERAL TOLERANCES (UNLESS SPECIFIED) |              | DIMENSION STYLE   | SCALE        | DESIGN UNITS                                      | MODEL NO.   |                     |  |
|   | 10 UNDER ± 0.2                        |              | MM ONLY   | ---          | METRIC  | 52610-**-71 |                     |  |
|   | 10 OVER 30 UNDER ± 0.25               |              | T. UENO '03/12/12   | DATE         | TITLE   |             |                     |  |
|   | 30 OVER ± 0.3                         |              | M. SASAO '03/12/12  | DATE         | 1.0 FPC CONN SMT<br>ZIF EMBSTP PKG<br>-LEAD FREE- |             |                     |  |
|   | ANGULAR ± 3 °                         |              | M. SASAO '03/12/12  | DATE         | MOLEX INCORPORATED                                |             |                     |  |
| DRAFT WHERE APPLICABLE MUST REMAIN WITHIN DIMENSIONS  |                                       | MATERIAL NO. | SEE TABLE   | DOCUMENT NO. | SD-52610-038                                      |             | SHEET NO.<br>2 OF 5 |  |
|   |                                       | SIZE         | THIS DRAWING CONTAINS INFORMATION THAT IS PROPRIETARY TO MOLEX INCORPORATED AND SHOULD NOT BE USED WITHOUT WRITTEN PERMISSION |              |   |             |                     |  |

10 9 8 7 6 5 4 3 2 1 EN-02JA(021)

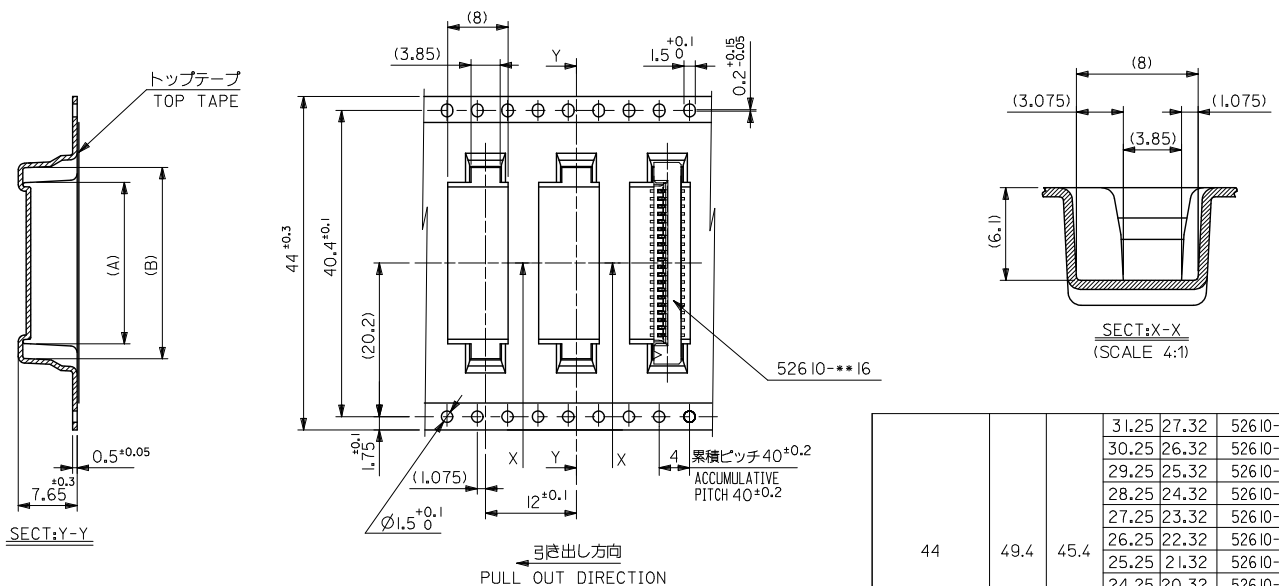
10 9 8 7 6 5 4 3 2 1



|                                |      |      |       |       |              |            |
|--------------------------------|------|------|-------|-------|--------------|------------|
| 32                             | 37.4 | 33.4 | 20.25 | 16.32 | 52610-1571   | 15         |
|                                |      |      | 19.25 | 15.32 | 52610-1471   | 14         |
|                                |      |      | 18.25 | 14.32 | 52610-1371   | 13         |
|                                |      |      | 17.25 | 13.32 | 52610-1271   | 12         |
|                                |      |      | 16.25 | 12.32 | 52610-1171   | 11         |
| キャリアテープ幅<br>CARRIER TAPE WIDTH | D    | C    | (B)   | (A)   | MATERIAL NO. | 種数<br>CKT. |

|  |  |   |  |               |                     |                |                      |   |                     |
|--|--|---|--|---------------|---------------------|----------------|----------------------|---|---------------------|
| REVISED<br>REV. C  | EC NO. J2009-2061<br>DRAWN BY CHIKDHATSUMOTO<br>CHECKED BY CHIKDHATSUMOTO<br>APPROVED BY APPR.NIKITA | DESCRIPTION<br>2009/05/20<br>2009/05/21<br>2009/05/21 | GENERAL TOLERANCES (UNLESS SPECIFIED)  |               | DIMENSION STYLE     | SCALE          | DESIGN UNITS         | MODEL NO.   |                     |
|  |  |   | 10 UNDER   | $\pm 0.2$     | MM ONLY             | ---            | METRIC               | 52610-**-71                                       |                     |
|  |  |   | 10 OVER 30 UNDER   | $\pm 0.25$    | DRAWN BY T. UENO    | DATE '03/12/12 | TITLE                | 1.0 FPC CONN SMT<br>ZIF EMBSTP PKG<br>-LEAD FREE- |                     |
|  |  |   | 30 OVER  | $\pm 0.3$     | CHECKED BY M. SASAO | DATE '03/12/12 | APPROVED BY M. SASAO | DATE '03/12/12                                    | MOLEX INCORPORATED  |
|  |  |   | ANGULAR  | $\pm 3^\circ$ | MATERIAL NO.        | SEE TABLE      | DOCUMENT NO.         | SD-52610-038                                      | SHEET NO.<br>3 OF 5 |
| DRAFT WHERE APPLICABLE<br>MUST REMAIN<br>WITHIN DIMENSIONS |  |   | THIS DRAWING CONTAINS INFORMATION THAT IS PROPRIETARY TO MOLEX<br>INCORPORATED AND SHOULD NOT BE USED WITHOUT WRITTEN PERMISSION |               |                     |                |                      |   |                     |

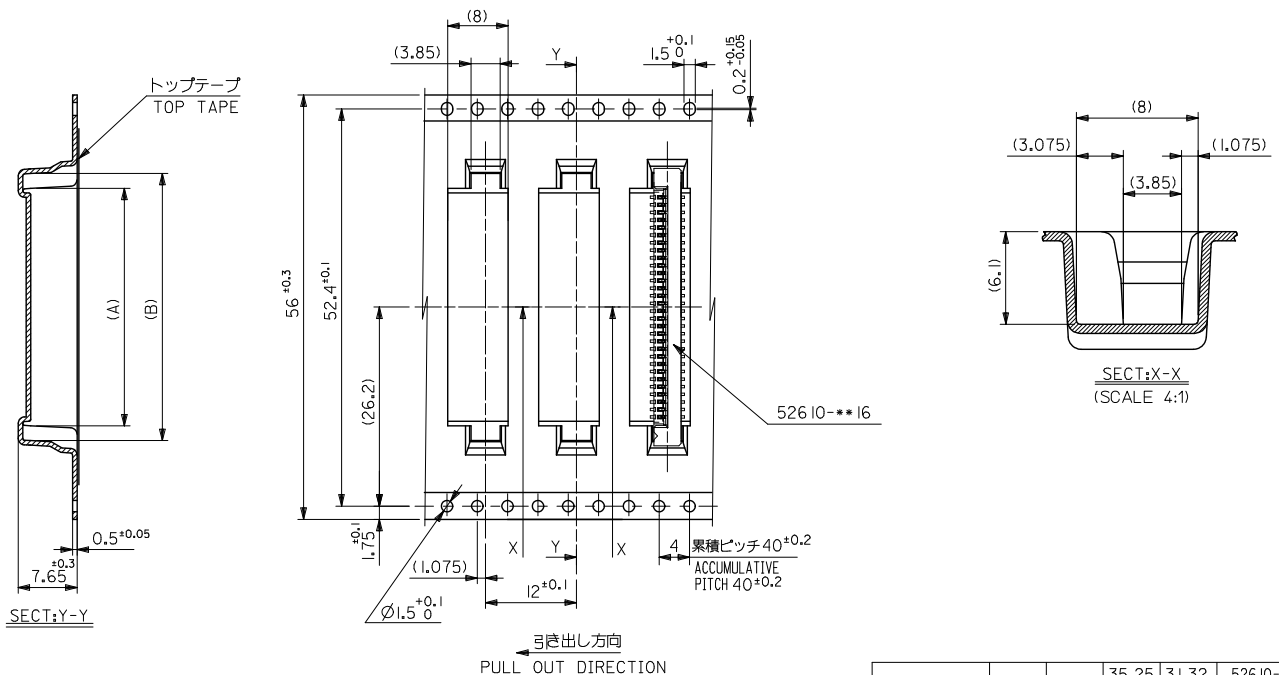
10 9 8 7 6 5 4 3 2 1



|                                |       |            |       |       |            |     |              |            |
|--------------------------------|-------|------------|-------|-------|------------|-----|--------------|------------|
| 44                             | 49.4  | 45.4       | 31.25 | 27.32 | 52610-2671 | 26  |              |            |
|                                |       |            | 30.25 | 26.32 | 52610-2571 | 25  |              |            |
|                                |       |            | 29.25 | 25.32 | 52610-2471 | 24  |              |            |
|                                |       |            | 28.25 | 24.32 | 52610-2371 | 23  |              |            |
|                                |       |            | 27.25 | 23.32 | 52610-2271 | 22  |              |            |
|                                |       |            | 26.25 | 22.32 | 52610-2171 | 21  |              |            |
|                                |       |            | 25.25 | 21.32 | 52610-2071 | 20  |              |            |
|                                |       |            | 24.25 | 20.32 | 52610-1971 | 19  |              |            |
|                                |       |            | 23.25 | 19.32 | 52610-1871 | 18  |              |            |
|                                |       |            | 22.25 | 18.32 | 52610-1771 | 17  |              |            |
| 21.25                          | 17.32 | 52610-1671 | 16    |       |            |     |              |            |
| キャリアテープ幅<br>CARRIER TAPE WIDTH |       |            | D     | C     | (B)        | (A) | MATERIAL NO. | 種数<br>CKT. |

|  |                                       |            |   |                   |  |                              |
|--|---------------------------------------|------------|---|-------------------|--|------------------------------|
| REVISED<br>IEC NO. J2009-2061<br>DRAWN BY<br>CHIKDHATSUMOTO<br>APPROVED BY<br>APPR.NIKUITA | GENERAL TOLERANCES (UNLESS SPECIFIED) |            | DIMENSION STYLE   | SCALE             | DESIGN UNITS   | THIRD ANGLE PROJECTION       |
|  | 10 UNDER                              | ± 0.2      | MM ONLY   | ---               | METRIC   | ☉ □                          |
|  | 10 OVER 30 UNDER                      | ± 0.25     | DRAWN BY<br>T. UENO   | DATE<br>'03/12/12 | TITLE<br>1.0 FPC CONN SMT<br>ZIF EMBSTP PKG<br>-LEAD FREE- |                              |
|  | 30 OVER                               | ± 0.3      | CHECKED BY<br>M. SASAO  | DATE<br>'03/12/12 | MOLEX INCORPORATED   |                              |
|  | ANGULAR                               | ± 3 °      | APPROVED BY<br>M. SASAO   | DATE<br>'03/12/12 | MATERIAL NO.   | DOCUMENT NO.<br>SD-52610-038 |
| DRAFT WHERE APPLICABLE MUST REMAIN WITHIN DIMENSIONS                                       |                                       | SIZE<br>A3 | THIS DRAWING CONTAINS INFORMATION THAT IS PROPRIETARY TO MOLEX INCORPORATED AND SHOULD NOT BE USED WITHOUT WRITTEN PERMISSION |                   |  |                              |

10 9 8 7 6 5 4 3 2 1



|                                |      |      |       |       |              |            |
|--------------------------------|------|------|-------|-------|--------------|------------|
| 56                             | 61.4 | 57.4 | 35.25 | 31.32 | 52610-3071   | 30         |
| キャリアテープ幅<br>CARRIER TAPE WIDTH | D    | C    | (B)   | (A)   | MATERIAL NO. | 極数<br>CKT. |
|                                |      |      |       |       | 52610-**71   | MODEL NO.  |

|  |  |  |                            |                   |  |                           |
|--|--|--|----------------------------|-------------------|--|---------------------------|
| REVISED<br>EC NO. J2009-2061<br>DRAWN BY<br>CHIKDHATSUMOTO<br>APPROVED BY<br>APPR.NUKITA   | GENERAL TOLERANCES<br>(UNLESS SPECIFIED) |  | DIMENSION STYLE<br>MM ONLY | SCALE<br>---      | DESIGN UNITS<br>METRIC                                     | THIRD ANGLE<br>PROJECTION |
|  | 10 UNDER                                 | ± 0.2  | DRAWN BY<br>T. UENO        | DATE<br>'03/12/12 | TITLE<br>1.0 FPC CONN SMT<br>ZIF EMBSTP PKG<br>-LEAD FREE- |                           |
|  | 10 OVER 30 UNDER                         | ± 0.25   | CHECKED BY<br>M. SASAO     | DATE<br>'03/12/12 | MOLEX INCORPORATED   |                           |
|  | 30 OVER                                  | ± 0.3  | APPROVED BY<br>M. SASAO    | DATE<br>'03/12/12 | DOCUMENT NO.<br>SD-52610-038                               | SHEET NO.<br>5 OF 5       |
| ANGULAR ± 3 °  |  | DRAFT WHERE APPLICABLE<br>MUST REMAIN<br>WITHIN DIMENSIONS |                            | SEE TABLE         |  |                           |
| THIS DRAWING CONTAINS INFORMATION THAT IS PROPRIETARY TO MOLEX<br>INCORPORATED AND SHOULD NOT BE USED WITHOUT WRITTEN PERMISSION |  |  |                            |                   |  |                           |