

Excellent Integrated System Limited

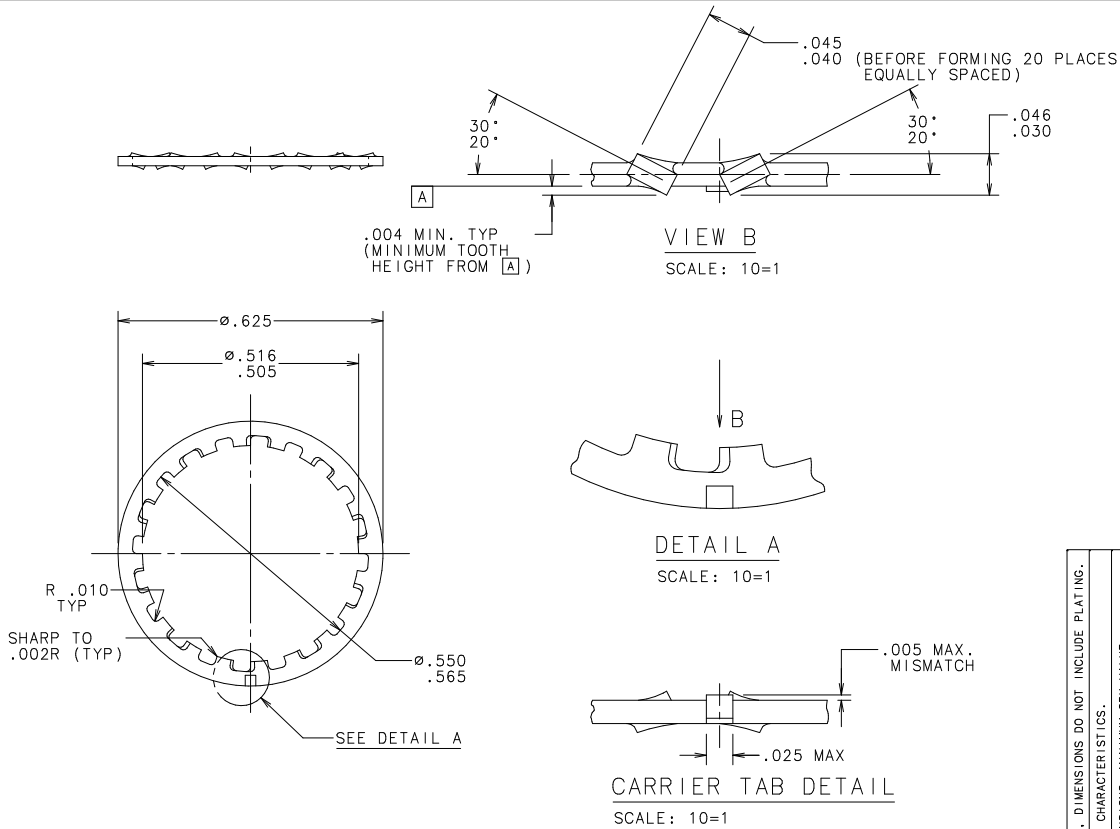
Stocking Distributor

Click to view price, real time Inventory, Delivery & Lifecycle Information:

[Littelfuse](#)
[09050023H](#)

For any questions, you can email us directly:
sales@integrated-circuit.com

CAD GENERATED DRAWING - NO PENCIL CHANGES ALLOWED



- NOTES:
1. MATERIAL: .022 ±.001 THICK C.R. ANNEALED AISI-SAE 1050.
 2. HEAT TREATMENT: HARDEN & TEMPER TO Rc 44-47.
 3. ELECTRO-ZINC PLATE .0002/.0005 (SEE NOTE 4).
 4. BAKE AT 375° ±25° F. FOR 4 HOURS - BAKING OPERATION TO BE DONE WITHIN 4 HOURS AFTER PLATING TO PROVIDE FOR HYDROGEN EMBRITTELMET RELIEF.

BILL OF MATERIAL		FINISH		SCALE	
NO	COMPONENT NO	DESCRIPTION	QTY/M	U/M	SEE NOTES 2, 3 & 4
1	9	18	DRW	2/19/98	4=1
2	10	19	CHK		
3	12	20	APPD		
4	13	21			
5	14	23			
6	15	33			
7	16	43			
8	17	53			

TOLERANCE UNLESS OTHERWISE SPECIFIED
 TWO PLACE DEC ±.01
 THREE PLACE DEC ±.005
 ANGULAR ±1°

LOCKWASHER (20 TOOTH)

LTR	REVISION	CHK	APD
G	39025C- REVISED & REDRAWN ON NEW FORMAT 3/13/98 JMB		
H	81022D-REMOVE 689487 FROM MAT'L SPEC. 01/26/01 PJM		

UNLESS OTHERWISE SPECIFIED, DIMENSIONS DO NOT INCLUDE PLATING.
 Q DENOTES CRITICAL CHARACTERISTICS.
 CP DENOTES CP DIMENSIONS - MINIMUM CP VALUE
 DENOTES A CHARACTERISTIC THAT PROVIDES AN INDICATION OF PROCESS PERFORMANCE TO BE USED IN THE INSPECTION PROCEDURE FOR MEASUREMENT (S) OF THIS DIMENSION. THE TOLERANCE SHOULD BE INSPECTED ON INSTRUCTIONS.
 CP DENOTES CP DIMENSIONS - MINIMUM CP VALUE (CP) BE WITHIN THE DIMENSIONAL LIMITATIONS SHOWN ON DRAWING AND INITIALLY LOCATED TO ALLOW FOR MAXIMUM TOOL LIFE.

UNCONTROLLED DOCUMENT

REVISED DRAWING NO. 905-023
 H
 Littelfuse
 DES PLAINES, ILLINOIS 60016