

## Excellent Integrated System Limited

Stocking Distributor

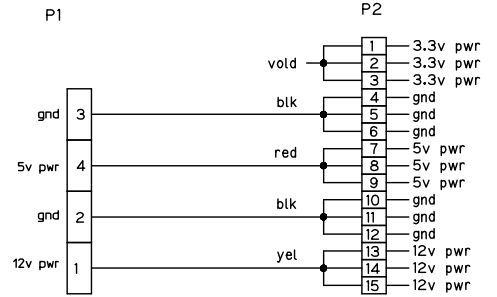
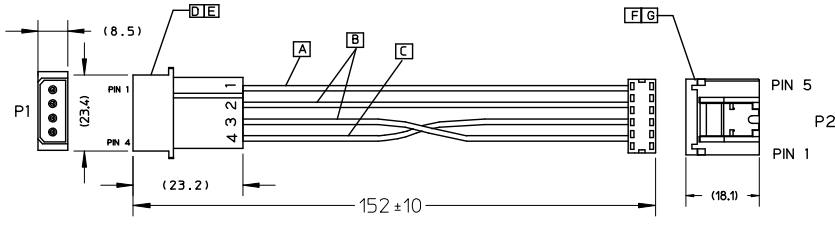
Click to view price, real time Inventory, Delivery & Lifecycle Information:

[Molex Connector Corporation](#)  
[0685610019](#)

For any questions, you can email us directly:

[sales@integrated-circuit.com](mailto:sales@integrated-circuit.com)

7 6 5 4 3 2 1



NOTE: 1. ELECTRIC PERFORMANCE: (オ断 ヤトフ)  
 DIELECTRIC STRENGTH: 500 V DC/0.01Sec.(ス断絶/カネヨアチ00V/0.01チ  
 INSULATION RESISTANCE: 100M OHMS Min.(オ断絶ケラ断100ユラナキ)  
 CONDUCTIVE RESISTANCE: 2 OHMS Max.(オシフ断絶ケラ断0ナキトキ)  
 2.S-ATA HOUSING:  
 POLYESTER(PBT),UL94V-0(BLACK)

68561-0019	679260002	30u" Gold-plated terminal
68561-0018	679260001	Gold flash terminal
MOLEX P/N	S-ATA CONN.	DESCRIPTION

G	COVER 679261040	1	
F	S-ATA CONN. SEE TABLE	1	
E	4P CONTACT 887899491	4	
D	4P PWR HOUSING 887899490	1	
C	UL1007 #18 RED 887711301	1	144
B	UL1007 #18 BLK 887711300	2	288
A	UL1007 #18 YEL 887711303	1	144
ITEM	DESCRIPTION	QTY	L(mm)

ENTER DESCRIPTION EC NO: CFG2014-1666 DRWN: XIAO04 CHKD: GXYANG APPR: FNIE	QUALITY SYMBOLS ▽=0 ▽=0	GENERAL TOLERANCES (UNLESS SPECIFIED)		DIMENSION STYLE MM ONLY		SCALE ---	DESIGN UNITS METRIC	THIRD ANGLE PROJECTION	
		mm	INCH	DRAWN BY GXYANG	DATE 04/08/10	TITLE S-ATA IDT POWER LATCHING ADAPTER CABLE ASSEMBLY 6 INCH (5V+12V)			
		4 PLACES ± ---	± ---	CHECKED BY TEDDY	DATE 04/08/10	MOLEX INCORPORATED			
		3 PLACES ± ---	± ---	APPROVED BY BORON	DATE 04/08/10	MATERIAL NO. 685610018/9			
2 PLACES ± ---	± ---	DRAFT WHERE APPLICABLE MUST REMAIN WITHIN DIMENSIONS		DOCUMENT NO. SD-68561-003		SHEET NO. 1 OF 1		THIS DRAWING CONTAINS INFORMATION THAT IS PROPRIETARY TO MOLEX INCORPORATED AND SHOULD NOT BE USED WITHOUT WRITTEN PERMISSION	
1 PLACE ± ---	± ---	ANGULAR ± ---°		SIZE A4					

tb\_frame\_A4\_P\_ME\_T  
Rev. D 2004/04/02

6 5 4 3 2 1