



Excellent Integrated System Limited

Stocking Distributor

Click to view price, real time Inventory, Delivery & Lifecycle Information:

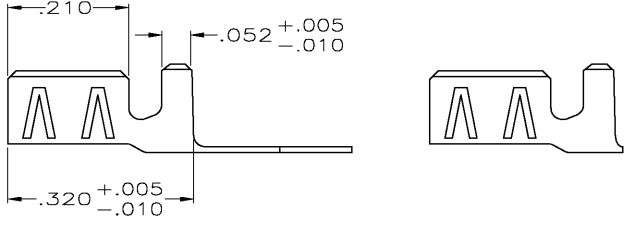
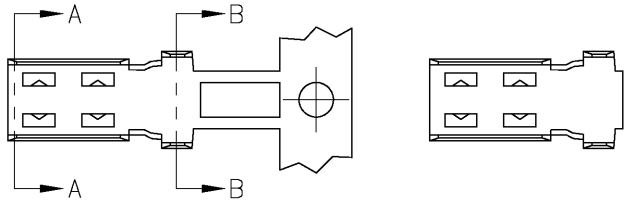
[TE Connectivity AMP Connectors](#)
[9-226286-0](#)

For any questions, you can email us directly:

sales@integrated-circuit.com

THIS DRAWING IS UNPUBLISHED. RELEASED FOR PUBLICATION
 © COPYRIGHT BY TYCO ELECTRONICS CORPORATION. ALL RIGHTS RESERVED.

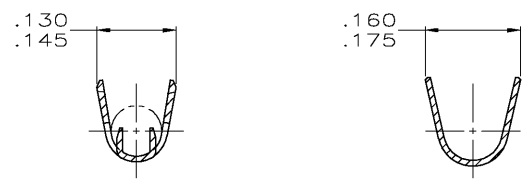
LOC	DIST	REVISIONS			
P	LTR	DESCRIPTION	DATE	DWN	APVD
AJ	16	L	REV PER 0S14-0202-04	14MAY04	JDP JL



VIEW C

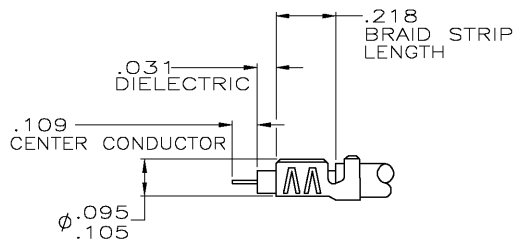
VIEW D
 (SAME AS VIEW C EXCEPT AS SHOWN)

- ACCEPTS COAX CABLE WITH .095-.122 O.D. JACKETS AND .055-.077 DIELECTRIC O.D. AND A #25 SOLID CENTER CONDUCTOR
- BRASS PER MIL-C-50, (.010 THK).
- TIN-LEAD PLATE PER MIL-P-81728 OVER NICKEL PLATE PER QQ-N-290.
- TIN PLATE PER ASTM B-545
- INSTRUCTION SHEET NO.: 408-2472-1.



SECTION A-A

SECTION B-B



ASSEMBLED VIEW

4	ON STRIP	C	9-226286-1
4	LOOSE PIECE	D	9-226286-0
3	LOOSE PIECE	D	226286-3
3	ON STRIP	C	226286-2
FINISH	TYPE	VIEW	PART NUMBER

THIS DRAWING IS A CONTROLLED DOCUMENT.		DWN M. O'BRINE 18FEB00	Tyco Electronics Corporation Harrisburg, Pa 17105-3608	
DIMENSIONS: INCHES		CHK J. LIPPERT 18FEB00	NAME PICK TYPE-BRAID TERMINATION	
TOLERANCES UNLESS OTHERWISE SPECIFIED:		APVD J. LIPPERT 18FEB00	SIZE A3	CAGE CODE 00779
0 PLC ± -	1 PLC ± -	PRODUCT SPEC	DRAWING NO C=226286	RESTRICTED TO
2 PLC ± -	3 PLC ± .008	APPLICATION SPEC	WEIGHT	SCALE 6:1
4 PLC ± -	ANGLES ± -	MATERIAL	CUSTOMER DRAWING	SHEET 1 OF 1
FINISH SEE TABLE		REV L		