



Excellent Integrated System Limited

Stocking Distributor

Click to view price, real time Inventory, Delivery & Lifecycle Information:

[TE Connectivity AMP Connectors](#)
[9-226287-0](#)

For any questions, you can email us directly:

sales@integrated-circuit.com

4

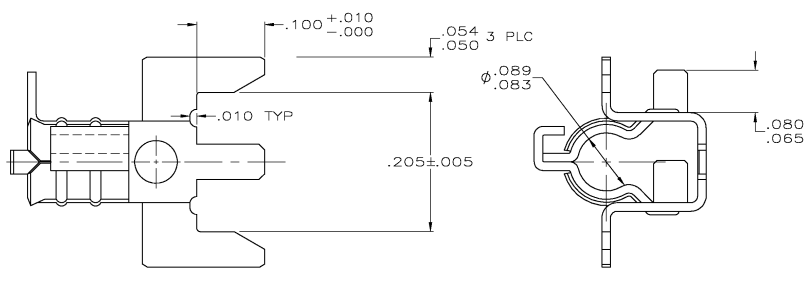
3

2

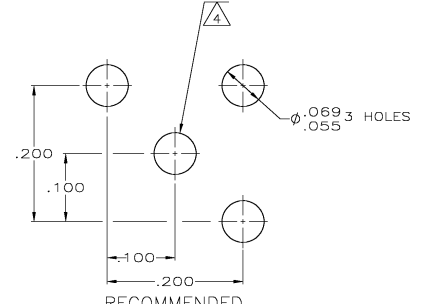
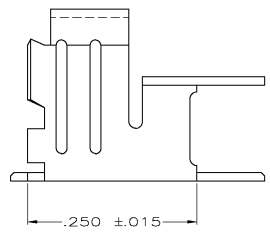
1

THIS DRAWING IS UNPUBLISHED. RELEASED FOR PUBLICATION
 © COPYRIGHT BY TYCO ELECTRONICS CORPORATION. ALL RIGHTS RESERVED.

LOC		DISP		REVISIONS			
TP	LTN	DESCRIPTION	DATE	OWN	APPD		
AJ	16	K	RDW & REV PER OS14-0114-04	OSMAY04	JDP	JL	



1. MATES WITH 226286-2 OR -3, CRIMPED TO CABLE
2. 60/40 MATTE TIN-LEAD PL PER MIL-P-81728
3. NICKEL PL PER QQ-N-290
4. REFERENCE AMP MINIATURE SPRING SOCKET, 330808, FOR RECOMMENDED HOLE DIAMETERS
5. INSTRUCTION SHEET NO.: 408-2472-1
6. TIN PLATE PER ASTM B-545.



RECOMMENDED MOUNTING HOLE PATTERN

6	9-226287-0
2	226287-2
FINISH	PART NUMBER

THIS DRAWING IS A CONTROLLED DOCUMENT.		PN P. ALSEDEK 4-30-90	Tyco Electronics Corporation Harrisburg, Pa 17105-3608
DIMENSIONS: INCHES		DK M. SNEED 4-24-90	
TOLERANCES UNLESS OTHERWISE SPECIFIED:		WFO M. SNEED 04-24-90	RECEPTACLE, PCB, VERTICAL, BRAID PIC
0 PLC ± .010 1 PLC ± .010 2 PLC ± .008 3 PLC ± .010 4 PLCS ± .010 ANGLES ± .5°		PRODUCT SPEC: — APPLICATION SPEC: —	
MATERIAL: BRASS, MIL-C-50, FINISH		WEIGHT: .006 oz	SIZE: A2
		CUSTOMER DRAWING	CAGE CODE: 00779 DRAWING NO: 226287 RESTRICTED TO: — SCALE: 10:1 SHEET 1 OF 1 REV K