

Excellent Integrated System Limited

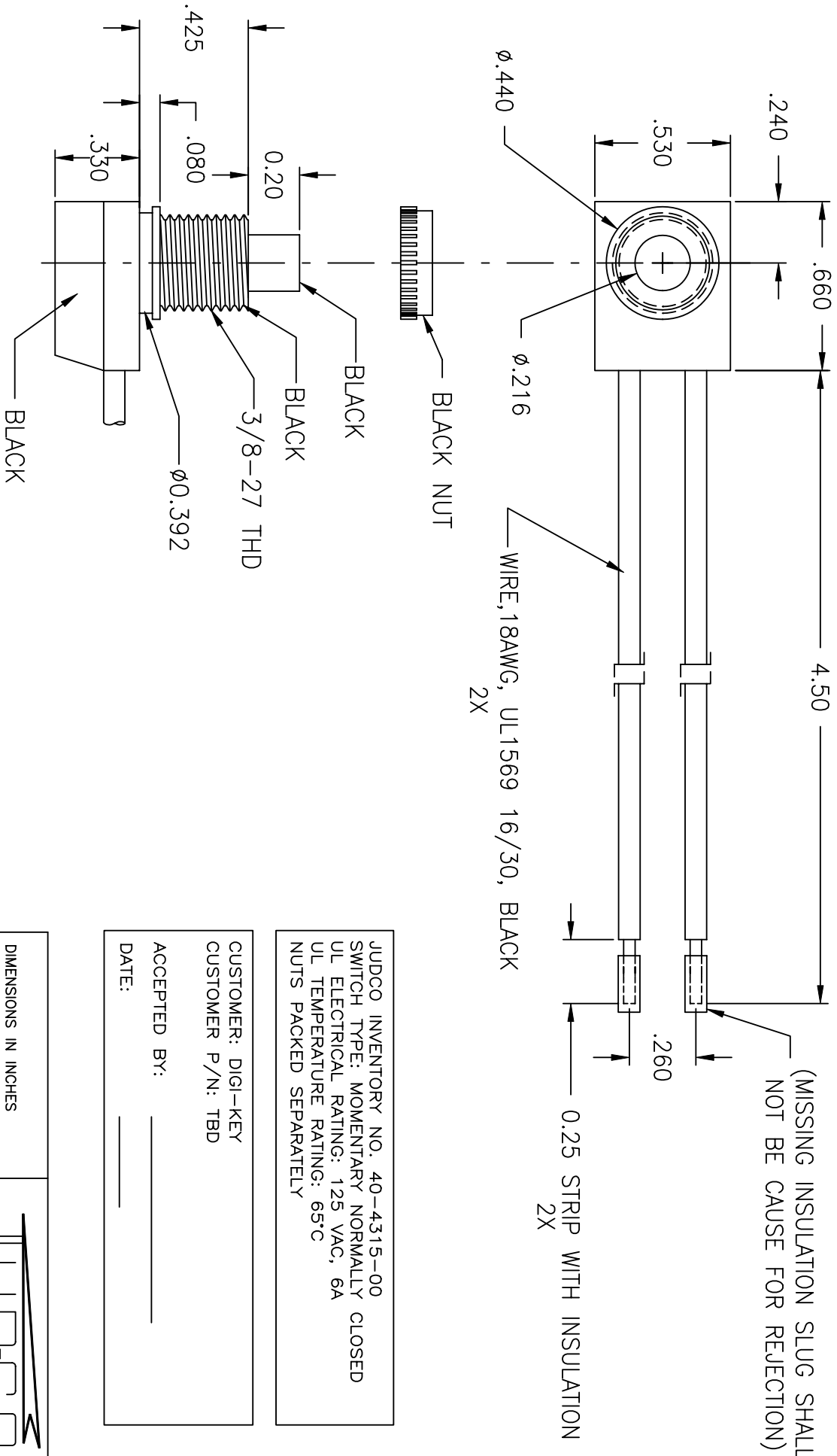
Stocking Distributor

Click to view price, real time Inventory, Delivery & Lifecycle Information:

[Judco Manufacturing, Inc.](#)
[40-4315-00](#)

For any questions, you can email us directly:

sales@integrated-circuit.com



LTR	EN	DESCRIPTION	APPR	BY	DATE
A	-	INITIAL RELEASE	RB	DC	01-27-05

JUDCO INVENTORY NO. 40-4315-00
 SWITCH TYPE: MOMENTARY NORMALLY CLOSED
 UL ELECTRICAL RATING: 125 VAC, 6A
 UL TEMPERATURE RATING: 65°C
 NUTS PACKED SEPARATELY

CUSTOMER: DIGI-KEY
 CUSTOMER P/N: TBD
 ACCEPTED BY: _____
 DATE: _____

DIMENSIONS IN INCHES
 DIMENSIONS ARE REFERENCE

HARBOR CITY CALIFORNIA

OUTLINE
 J-188A-3 ULAC

This document embodies a product, component, and/or design proprietary to JUDCO MANUFACTURING INC., and which is protected either as a trade secret, by U.S. Patent, or by copyright. It may not be used in any way without written express consent of JUDCO MANUFACTURING INC.

DRAWN: DC	01-27-05	DWG. NO.	1415-743
APPR: KJ	01-27-05		
141SU743A.DWG		SHEET	
		1 OF 1	