

## Excellent Integrated System Limited

Stocking Distributor

Click to view price, real time Inventory, Delivery & Lifecycle Information:

[Bel Fuse Inc.](#)  
[142-0593-431](#)

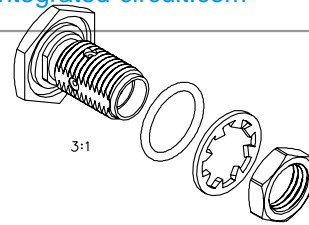
For any questions, you can email us directly:  
[sales@integrated-circuit.com](mailto:sales@integrated-circuit.com)



Distributor of Bel Fuse Inc.: Excellent Integrated System Limited  
 Datasheet of 142-0593-431 - CONN SMA JACK STR 50 OHM PUSH

Contact us: sales@integrated-circuit.com Website: www.integrated-circuit.com

PART NUMBER	ITEM ① BODY	ITEM ② CONTACT	ITEM ③ INSULATOR	ITEM ④ SEAL RING	ITEM ⑤ LOCK WASHER	ITEM ⑥ NUT
142-0593-431	BRASS GOLD PL .00001 MIN OVER NICKEL PL .0001 MIN OVER COPPER PL .00005 MIN	BERYLLIUM COPPER GOLD PL .00005 MIN OVER NICKEL PL .00005 MIN OVER COPPER PL .00005 MIN	TEFLON	SILICONE RUBBER	BRONZE GOLD PL .00001 MIN OVER NICKEL PL .00005 MIN	BRASS GOLD PL .00001 MIN OVER NICKEL PL .00005 MIN OVER COPPER PL .00005 MIN
142-0593-436	BRASS NICKEL PL .0001 MIN OVER COPPER PL .00005 MIN	BERYLLIUM COPPER GOLD PL .00005 MIN OVER NICKEL PL .00005 MIN OVER COPPER PL .00005 MIN	TEFLON	SILICONE RUBBER	BRONZE NICKEL PL .0001 MIN OVER COPPER PL .00005 MIN	BRASS NICKEL PL .0001 MIN OVER COPPER PL .00005 MIN



DRAWING NO. C - 142-0593-431/440	
REVISIONS	
0	
ENGINEERING RELEASE	
1	10-25-04

4-26-05  
FCN 49498

10-25-04

10-25-04

10-25-04

10-25-04

10-25-04

10-25-04

10-25-04

10-25-04

10-25-04

10-25-04

10-25-04

10-25-04

10-25-04

10-25-04

10-25-04

10-25-04

10-25-04

10-25-04

10-25-04

10-25-04

10-25-04

10-25-04

10-25-04

10-25-04

10-25-04

10-25-04

10-25-04

10-25-04

10-25-04

10-25-04

10-25-04

10-25-04

10-25-04

10-25-04

10-25-04

10-25-04

10-25-04

10-25-04

10-25-04

10-25-04

10-25-04

10-25-04

10-25-04

10-25-04

10-25-04

10-25-04

10-25-04

10-25-04

10-25-04

10-25-04

10-25-04

10-25-04

10-25-04

10-25-04

10-25-04

10-25-04

10-25-04

10-25-04

10-25-04

10-25-04

10-25-04

10-25-04

10-25-04

10-25-04

10-25-04

10-25-04

10-25-04

10-25-04

10-25-04

10-25-04

10-25-04

10-25-04

10-25-04

10-25-04

10-25-04

10-25-04

10-25-04

10-25-04

10-25-04

10-25-04

10-25-04

10-25-04

10-25-04

10-25-04

10-25-04

10-25-04

10-25-04

10-25-04

10-25-04

10-25-04

10-25-04

10-25-04

10-25-04

10-25-04

10-25-04

10-25-04

10-25-04

10-25-04

10-25-04

10-25-04

10-25-04

10-25-04

10-25-04

10-25-04

10-25-04

10-25-04

10-25-04

10-25-04

10-25-04

10-25-04

10-25-04

10-25-04

10-25-04

10-25-04

10-25-04

10-25-04

10-25-04

10-25-04

10-25-04

10-25-04

10-25-04

10-25-04

10-25-04

10-25-04

10-25-04

10-25-04

10-25-04

10-25-04

10-25-04

10-25-04

10-25-04

10-25-04

10-25-04

10-25-04

10-25-04

10-25-04

10-25-04

10-25-04

10-25-04

10-25-04

10-25-04

10-25-04

10-25-04

10-25-04

10-25-04

10-25-04

10-25-04

10-25-04

10-25-04

10-25-04

10-25-04

10-25-04

10-25-04

10-25-04

10-25-04

10-25-04

10-25-04

10-25-04

10-25-04

10-25-04

10-25-04

10-25-04

10-25-04

10-25-04

10-25-04

10-25-04

10-25-04

10-25-04

10-25-04

10-25-04

10-25-04

10-25-04

10-25-04

10-25-04

10-25-04

10-25-04

10-25-04

10-25-04

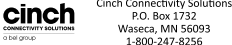
10-25-04

CUSTOMER DRAWING

THIS DRAWING TO BE INTERPRETED PER ANSI Y 14.5M - 1982

"μSTATION"

COMPANY CONFIDENTIAL



Cinch Connectivity Solutions  
P.O. Box 1732  
Waseca, MN 56093  
1-800-247-8256

TITLE  
SMA BKHD JACK ASSY  
ONE PIECE CONNECTOR,  
RG-405, .086 SEMI-RIGID

SHEET 2 OF 2

DRAWING NO. C - 142-0593-431/440

RELEASE DATE 4-26-05

SCALE 10:1

U/M INCH

FINISH

MATL

.XXX REF

DECIMALS

TOLERANCE UNLESS OTHERWISE SPECIFIED

DATE 10-12-04

DATE 10-27-04

DATE 12-27-04

DATE 4-26-05

DATE 10-12-04

DATE 10-27-04

DATE 12-27-04

DATE 4-26-05

DATE 10-12-04

DATE 10-27-04

DATE 12-27-04

DATE 4-26-05

DATE 10-12-04

DATE 10-27-04

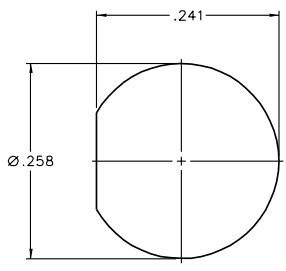
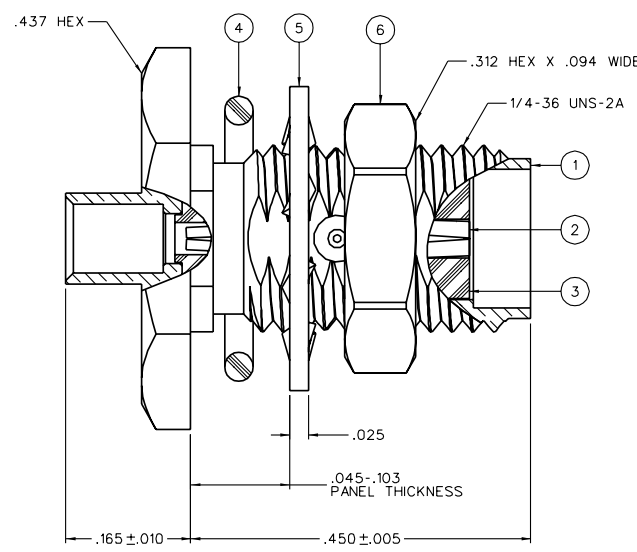
DATE 12-27-04

DATE 4-26-05

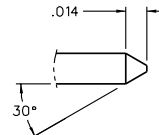
DATE 10-12-04

DATE 10-27-04

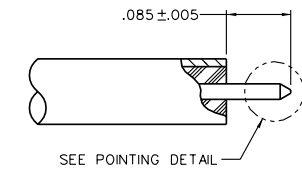
DATE 12-27-04



MOUNTING HOLE



POINTING DETAIL



CABLE STRIP DIMENSIONS

NOTES:  
 1. SPECIFICATIONS:  
 IMPEDANCE: 50 OHMS  
 FREQUENCY RANGE: 0-25 GHZ  
 VSWR: 1.07-.0F(GHZ) MAX AT 0-18 GHZ, TYPICALLY < 1.30 AT 18-25 GHZ  
 WORKING VOLTAGE: 335 VRMS MAX AT SEA LEVEL  
 DIELECTRIC WITHSTANDING VOLTAGE: 1000 VRMS MIN AT SEA LEVEL  
 INSULATION RESISTANCE: 5000 MEGOHM MIN  
 CONTACT RESISTANCE:  
 CENTER CONTACT - INITIAL 5.0 MILLIOHM MAX, AFTER ENVIRONMENTAL 8.0 MILLIOHM MAX  
 OUTER CONDUCTOR - INITIAL 2.0 MILLIOHM MAX, AFTER ENVIRONMENTAL NOT APPLICABLE  
 BODY TO CABLE - 0.5 MILLIOHM MAX  
 CORONA LEVEL: 250 VOLTS MIN AT 70,000 FEET  
 INSERTION LOSS: .03V/F (F IN GHZ), TESTED AT 10 GHZ  
 RF LEAKAGE: -90 DB MIN AT 2 TO 3 GHZ  
 RF HIGH POTENTIAL WITHSTANDING VOLTAGE: 670 VRMS AT 4 AND 7 MHZ  
 MECHANICAL:  
 ENGAGE/DISENGAGE TORQUE: 2 INCH-POUNDS MAX  
 MATING TORQUE: 7-10 INCH-POUNDS  
 COUPLING PROOF TORQUE: NOT APPLICABLE  
 COUPLING NUT RETENTION: NOT APPLICABLE  
 CONTACT RETENTION: 6 LBS MIN AXIAL FORCE  
 CABLE ACCEPTABILITY: RG-405, .086 OD SEMIRIGID  
 CABLE HEX CRIMP SIZE: NOT APPLICABLE  
 CABLE RETENTION: 30 LBS MIN AXIAL FORCE  
 DURABILITY: 500 CYCLES MIN  
 ENVIRONMENTAL:  
 (MEETS OR EXCEEDS THE APPLICABLE PARAGRAPH OF MIL-PRF-39012)  
 THERMAL SHOCK: MIL-STD-202, METHOD 107, CONDITION B, EXCEPT 115°C HIGH TEMP  
 OPERATING TEMPERATURE: -65°C TO 165°C  
 CORROSION: MIL-STD-202, METHOD 101, CONDITION B  
 SHOCK: MIL-STD-202, METHOD 213, CONDITION I  
 VIBRATION: MIL-STD-202, METHOD 204, CONDITION D  
 MOISTURE RESISTANCE: MIL-STD-202, METHOD 106