

Excellent Integrated System Limited

Stocking Distributor

Click to view price, real time Inventory, Delivery & Lifecycle Information:

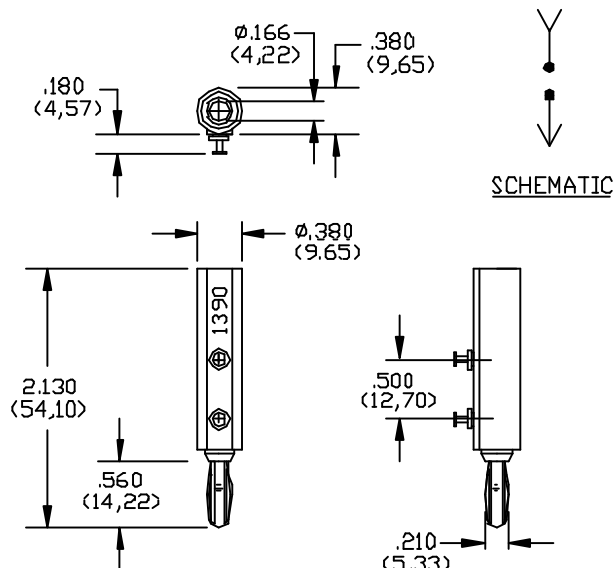
[Pomona Electronics](#)
[1390-0](#)

For any questions, you can email us directly:

sales@integrated-circuit.com

Pomona®

Model 1390 Banana Plug, Isolation



FEATURES:

- Provides two-terminal isolation.
- Top stack-up receptacles isolated from lower plug to permit addition of series resistors, diodes, etc.
- Ideal for computers, lab, circuit design and testing.
- Bright tin plated solder turret terminals for permanent noise-free connections.

MATERIALS:

Upper Conn: Banana Jack

Material: Brass per QQ-B-626, Alloy 360, ½ Hard.

Finish: Nickel plated per QQ-N-290, Class 2, 200/300 microinches.

Insulation: Polypropylene molded to banana jack and plug body.

Color: See Ordering Information

Marking: "Pomona 1390"

Lower Conn: Banana Plug

Material: Spring – Beryllium Copper per QQ-Plug Body – Brass per QQ-B-626, Alloy 360, ½ Hard.

Finish: Nickel plated per QQ-N-290, Class 2, 200/300 microinches.

Turrets:

Material: Brass per QQ-B-626, Alloy 360, ½ Hard.

Finish: Bright tin plated per MIL-T-10727, Type I, 100/250 microinches.

RATINGS:

Operating Temperature: +55° C. (+131° F.) Max.

Operating Voltage: Hand-held Testing: 30VAC/60VDC Max.

Hands Free Testing in Controlled Voltage Environments: 2500WVDC Max.

Current: 15 Amperes

ORDERING INFORMATION: Model 1390-*

*=Color, -0 Black, -2 Red,

Ordering example: 1390-2 Color is Red

All dimensions are in inches. Tolerances (except noted): .xx = ±.02" (.51 mm), .xxx = ±.005" (.127 mm).

All specifications are to the latest revisions. Specifications are subject to change without notice.

Registered trademarks are the property of their respective companies. Made in USA