

Excellent Integrated System Limited

Stocking Distributor

Click to view price, real time Inventory, Delivery & Lifecycle Information:

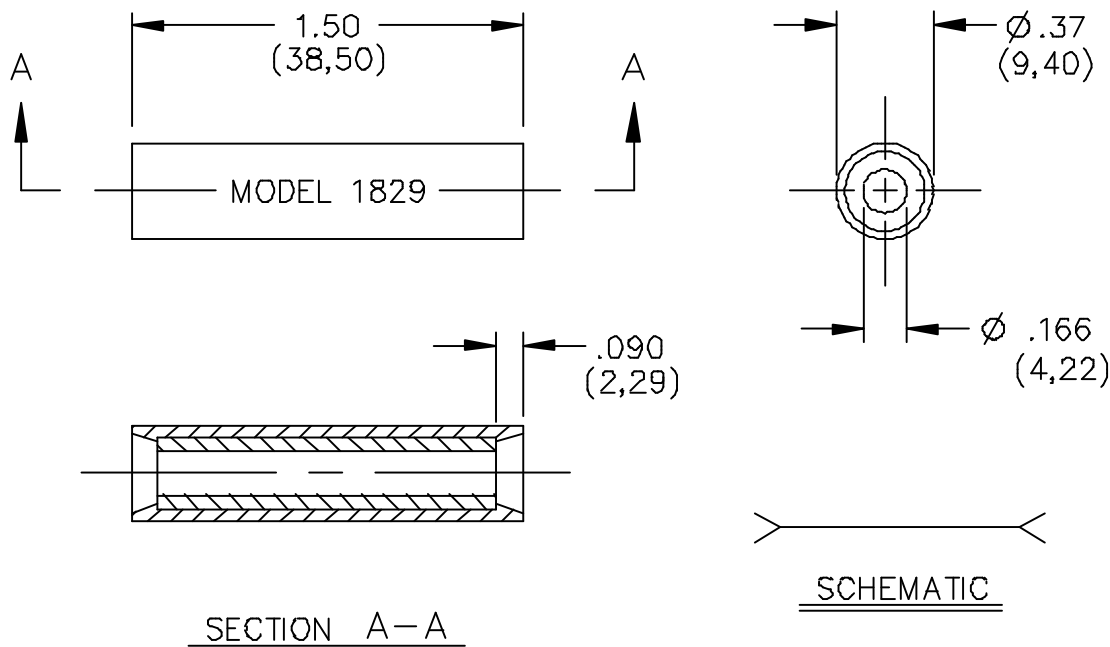
[Pomona Electronics](#)
[1829-0](#)

For any questions, you can email us directly:

sales@integrated-circuit.com

Pomona®

**Model 1829
 Single Banana Plug Splice**



FEATURES:

- Provides a fast and easy method to splice two cables together to increase cable length.

MATERIALS:

Jacks : Brass, Nickel Plated
 Insulation: Polypropylene

RATINGS:

Operating Voltage: 5000 VDC
 Operating Temperature: +55° C. (+131° F.) Max.
 Current: 15 Amperes Max.

ORDERING INFORMATION: Model 1829-*

* = Color, Standard Colors: -0 Black, -2 Red
 Sold in packages of ten.

All dimensions are in inches. Tolerances (except noted): .xx = ±.02" (.51 mm), .xxx = ± .005" (.127 mm).
 All specifications are to the latest revisions. Specifications are subject to change without notice.
 Registered trademarks are the property of their respective companies. Made in USA