

## Excellent Integrated System Limited

Stocking Distributor

Click to view price, real time Inventory, Delivery & Lifecycle Information:

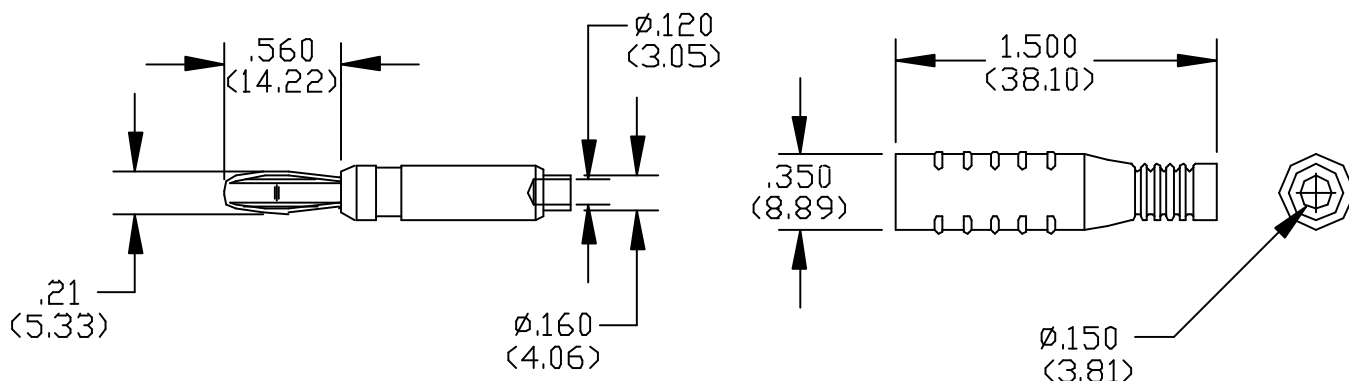
[Pomona Electronics](#)  
[5170-0](#)

For any questions, you can email us directly:

[sales@integrated-circuit.com](mailto:sales@integrated-circuit.com)

# Pomona®

## Model 5170 Do-It-Yourself In-Line Banana Plug With Flexible Boot



### FEATURES:

- Ideal for making test cables and field repairs.
- Use with Model #5168 Banana Jack to make extensin cables
- Part will accept 14, 16 AWG wire, crimp or solder connection.
- Snap-on two piece design allows the wire to be crimped or soldered.

### MATERIALS:

#### In-Line Banana Plug

- Plug Body: Brass per QQ-B-626, Alloy 360, ½ Hard.
- Spring: Beryllium Copper per ASTM B194. Alloy 172, Cond. HT.
- Insulation: Flexible PVC.
- Marking: "POMONA"
- Finish: Banana Plug – Nickel plated per QQ-N-290, Class 2, 200/300 micro-inches.

### RATINGS: (Independent of Wire)

- Operating Temperature: +50°C. (+122°F.) Max.
- Working Voltage: Hand-held testing: 30VAC/60VDC Max.  
 Hands free testing in controlled voltage environments: 5000 WVDC Max.
- Current: 15 Amperes

### ORDERING INFORMATION: Model 5170-\*

- \*=Color, -0 Black, -2 Red
- Ordering Example: 5170-0, Color is Black
- Colors other than those specified are available on request.

All dimensions are in inches. Tolerances (except noted): .xx = ±.02" (.51 mm), .xxx = ±.005" (.127 mm).  
 All specifications are to the latest revisions. Specifications are subject to change without notice.  
 Registered trademarks are the property of their respective companies. Made in USA