



Distributor of TE Connectivity AMP Connectors: Excellent Integrated System Limited
Datasheet of 390378-7 - D-Sub Connector Receptacle, Female Sockets 68 Position Free
Hanging (In-Line) IDC, Ribbon Cable

Contact us: sales@integrated-circuit.com Website: www.integrated-circuit.com

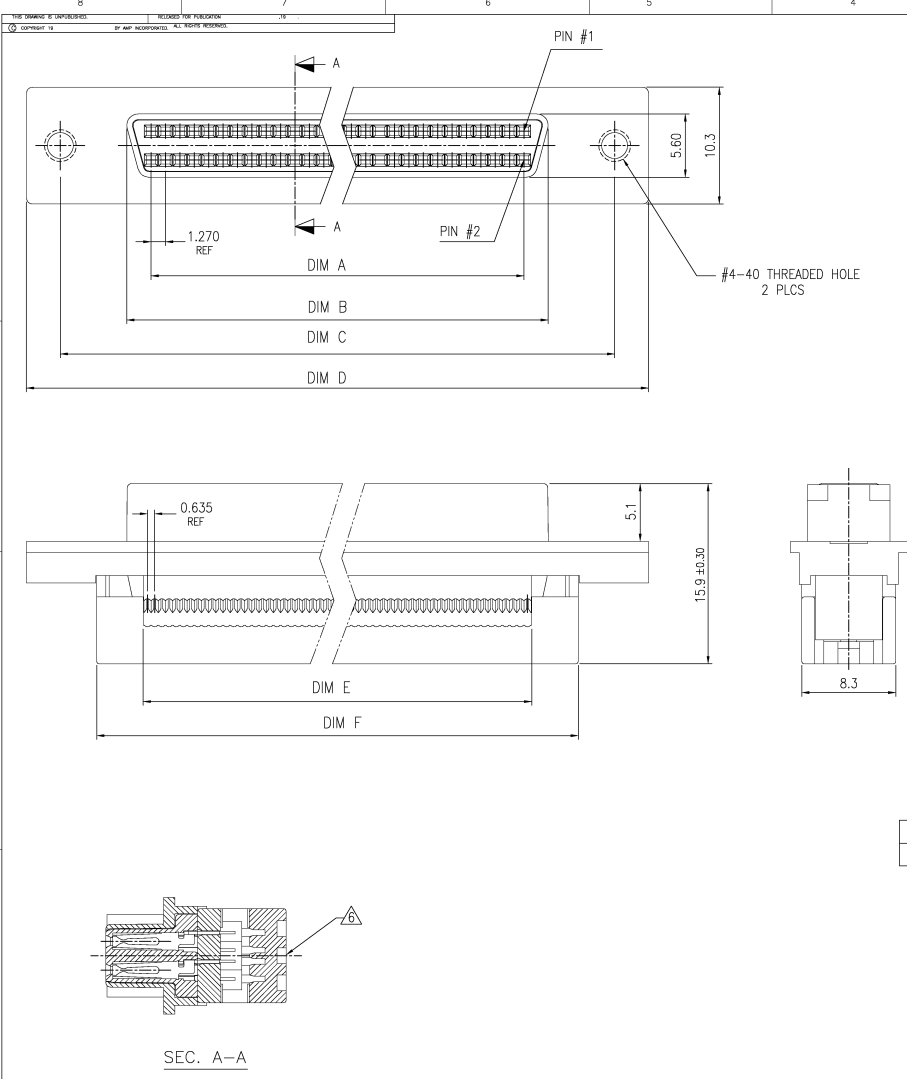
Excellent Integrated System Limited

Stocking Distributor

Click to view price, real time Inventory, Delivery & Lifecycle Information:

[TE Connectivity AMP Connectors
390378-7](#)

For any questions, you can email us directly:
sales@integrated-circuit.com



- △ HOUSING: PBT, 30% GLASS REINFORCED, UL94V-0.
CONTACTS: PHOS. BRONZE.
- △ CONTACTS: GOLD PLATED (SEE TABLE) ON MATING END, 1.27um [.000050in] MIN BRIGHT TIN-LEAD ON TERMINATION AREA, ALL OVER 1.27um [.000050in] MIN NICKEL ON ENTIRE CONTACT.
- △ BRACKET: ZINC ALLOY. PLATING: 1.27um [.000050] MIN. NICKEL.
- △ SPECIFICATIONS:
CURRENT RATING: 1A.
VOLTAGE RATING: 30V AC.
INSULATION RESISTANCE: 1000 MEGOHMS MIN. AT 500V DC.
CONTACT RESISTANCE: 55 MILLIOHMS MAX.
DIELECTRIC WITHSTANDING VOLTAGE: 250V AC FOR 1 MINUTE.
CONTACT RETENTION FORCE: 600 gf MIN.
TOTAL INSERTION FORCE: 4 Kgf MAX. (FORCE DEPENDENT ON MATING CONNECTOR)
TOTAL WITHDRAWAL FORCE: 1.5 Kgf MAX. (FORCE DEPENDENT ON MATING CONNECTOR)
WIRE COVER RETENTION FORCE: 6 Kgf MIN.
OPERATION TEMPERATURE: -55°C TO 85°C.
- △ FOR USE WITH 30 & 32 AWG FLAT RIBBON CABLE.
SELECTION OF COMPATIBLE RIBBON CABLE AND APPLICATION TOOLING FOR USE WITH THIS PRODUCT IS THE RESPONSIBILITY OF THE USER.
- △ AMP LOGO LOCATED ON THIS SURFACE.
- 7. SPECIFICATIONS SUBJECT TO CHANGE WITHOUT NOTICE.
CONTACT AMP FOR THE LATEST SPECIFICATIONS.
- △ CONTACTS: GOLD PLATED (SEE TABLE) ON MATING END, 1.27um [.000050in] MIN BRIGHT TIN ON TERMINATION AREA, ALL OVER 1.27um [.000050in] MIN NICKEL ON ENTIRE CONTACT.

	51.5	43.30	63.90	57.93	46.20	41.91	TRAY	BLACK	0.76um [.000030in]	△	6-390378-7	68
OBSOLETE	51.5	43.30	63.90	57.93	46.20	41.91	TRAY	BLACK	0.03um [.000001in]	△	2-390378-7	68
OBSOLETE	40.07	31.87	52.47	46.50	34.77	30.48	TRAY	BLACK	0.03um [.000001in]	△	2-390378-5	50
	51.5	43.30	63.90	57.93	46.20	41.91	TRAY	BLACK	0.38um [.000015in]	△	1-390378-7	68
	40.07	31.87	52.47	46.50	34.77	30.48	TRAY	BLACK	0.38um [.000015in]	△	1-390378-5	50
	51.5	43.30	63.90	57.93	46.20	41.91	TRAY	BLACK	0.76um [.000030in]	△	390378-7	68
	40.07	31.87	52.47	46.50	34.77	30.48	TRAY	BLACK	0.76um [.000030in]	△	390378-5	50
	DIM F	DIM E	DIM D	DIM C	DIM B	DIM A	PACKAGING	COLOR	CONTACT FINISH		AMP PART NO.	# OF POS.

THIS DRAWING IS A CONTROLLED DOCUMENT

DATE	REV	DESCRIPTION

AMP Incorporated
 AMP logo
 RECEPTACLE ASSEMBLY, .025 CENTERLINE, AMP/LITE, 1050 SERIES
 DRAWING NO: A100779
 CUSTOMER DRAWING